

## ENO Single-lever mixer - Brushed Champagne (22kt Gold)

ENO

33 800 760



- 220mm projection
- pivotable spout 130°
- air-enriched flow
- height of mixer 167 mm
- height up to aerator 145 mm
- hole diameter 35 mm
- max. flow 8 l/min at 3 bar flow pressure
- lead-free
- This product can help a building meet the requirements of Green Building Rating Systems, e.g. LEED®, BREEAM®, DGNB
- WRAS 1904015

	Brushed Champagne (22kt Gold)	33 800 760-46
	Chrome	33 800 760-00
	Brushed Platinum	33 800 760-06
	Platinum	33 800 760-08
	Dark Chrome	33 800 760-19
	Brushed Durabronze (23kt Gold)	33 800 760-28
	Champagne (22kt Gold)	33 800 760-47
	Brushed Chrome	33 800 760-93
	Brushed Dark Platinum	33 800 760-99

### Recommended miscellaneous

**Dispenser without rosette -  
Brushed Champagne (22kt Gold)** 82 424 970-46

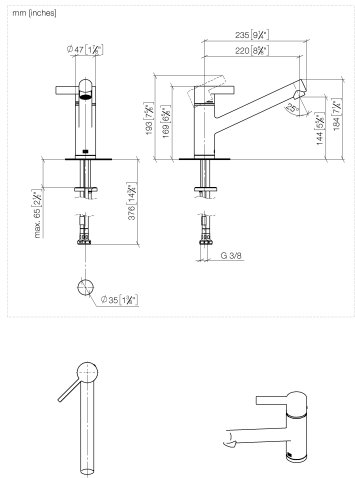


### Recommended miscellaneous

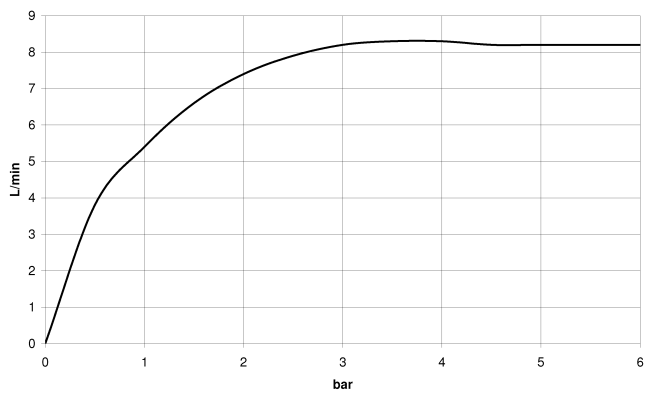
**Strainer waste with control handle  
- Brushed Champagne (22kt Gold)** 10 712 970-46



33 800 760



Flow rate chart



Codes & Standards

DIN 4109	Executive Order no. 1007	ISO 3822	Ü-Zeichen
----------	-----------------------------	----------	-----------



## ENO Single-lever mixer - Brushed Champagne (22kt Gold)

---

ENO

33 800 760

### Certificates

---

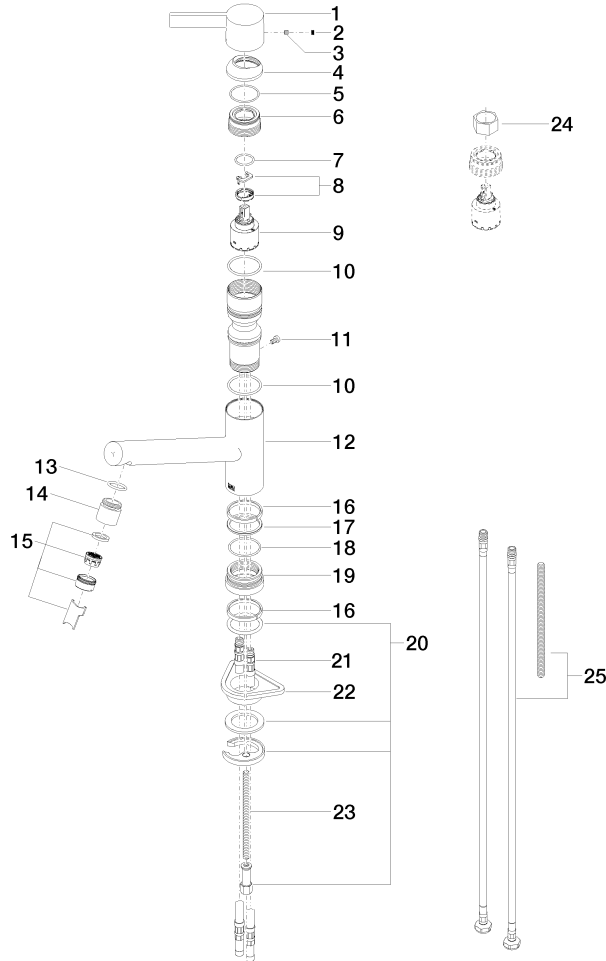
GDV\_0400

LGA\_19

33 800 760

**Product version from 5/6/2021**

Parts for other  
finishes can be found  
here: [Chrome](#)





## ENO Single-lever mixer - Brushed Champagne (22kt Gold)

ENO

33 800 760

### **Spare parts list**

**Product version from 5/6/2021**