

TARA Single-lever mixer - Chrome

TARA

33 815 888



- 236mm projection
- pivotable spout 360°
- air-enriched flow
- height of mixer 400 mm
- height up to aerator 230 mm
- hole diameter 35 mm
- max. flow 7 l/min at 3 bar flow pressure
- lead-free
- WRAS 1705020
- This product can help a building meet the requirements of Green Building Rating Systems, e.g. LEED®, BREEAM®, DGNB

| | | |
|---|-------------------------------|---------------|
|  | Chrome | 33 815 888-00 |
|  | Brushed Platinum | 33 815 888-06 |
|  | Platinum | 33 815 888-08 |
|  | Durabrass (23kt Gold) | 33 815 888-09 |
|  | Dark Chrome | 33 815 888-19 |
|  | Brushed Durabrass (23kt Gold) | 33 815 888-28 |
|  | Matte Black | 33 815 888-33 |
|  | Brushed Champagne (22kt Gold) | 33 815 888-46 |
|  | Champagne (22kt Gold) | 33 815 888-47 |
|  | Brushed Chrome | 33 815 888-93 |
|  | Brushed Dark Platinum | 33 815 888-99 |

Recommended miscellaneous

Strainer waste with control handle - Chrome

10 710 970-00



Recommended miscellaneous

Dispenser with rosette - Chrome

82 444 970-00



33 815 888



Flow rate chart



Certificates

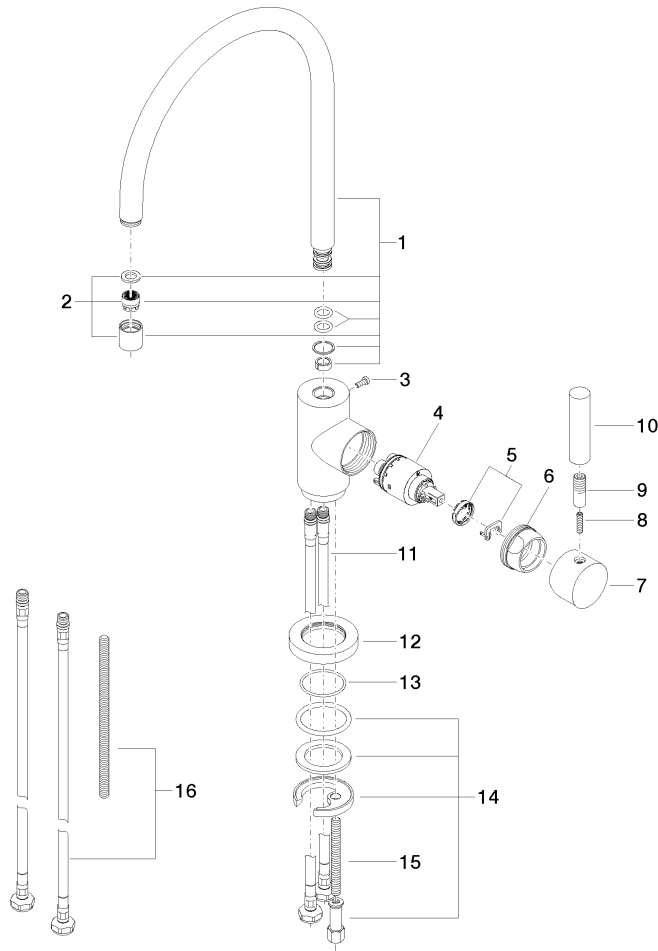
GDV_0400195.

ETA_18524.

LGA_8209.

WRAS_2311044.

33 815 888



Spare parts list

| No. | Item Number | Name | Quantity used | Delivery time |
|-----|--------------------|-------------|---------------|---------------|
| 1 | 90 28 22 049 02-00 | spout | 1 | 10 |
| 2 | 90 23 01 028 03-00 | aerator | 1 | 10 |
| 3 | 09 30 30 054 90 | screw | 1 | 2 |
| 4 | 90 15 05 065 00 90 | cartridge | 1 | 2 |
| 5 | 90 28 10 148 00 90 | accessories | 1 | 2 |
| 6 | 09 24 04 107-00 | nut | 1 | 10 |
| 7 | 90 20 88 040 00-00 | handle | 1 | 10 |
| 8 | 09 31 11 010 90 | pin | 1 | 2 |
| 9 | 90 24 04 048 00-00 | nipple | 1 | 10 |
| 10 | 11 170 880-00 | handle | 1 | 10 |
| 11 | 04 30 04 104 00 90 | hose | 2 | 2 |
| 12 | 09 28 10 055-00 | rosette | 1 | 10 |
| 13 | 09 14 10 034 90 | seal | 1 | 2 |
| 14 | 04 30 11 038 00 90 | fixing set | 1 | 2 |
| 15 | 09 31 11 011 90 | pin | 1 | 2 |
| 16 | 12 803 970 90 | extension | 1 | 60 |