

VAIA Single-lever mixer - Chrome

VAIA

33 816 809



- 241mm projection
- pivotable spout 360°
- air-enriched flow
- max. flow 7 l/min at 3 bar flow pressure
- lead-free
- This product can help a building meet the requirements of Green Building Rating Systems, e.g. LEED®, BREEAM®, DGNB

	Chrome	33 816 809-00
	Brushed Platinum	33 816 809-06
	Platinum	33 816 809-08
	Durabronze (23kt Gold)	33 816 809-09
	Dark Chrome	33 816 809-19
	Brushed Durabronze (23kt Gold)	33 816 809-28
	Matte Black	33 816 809-33
	Brushed Champagne (22kt Gold)	33 816 809-46
	Champagne (22kt Gold)	33 816 809-47
	Brushed Chrome	33 816 809-93
	Brushed Dark Platinum	33 816 809-99

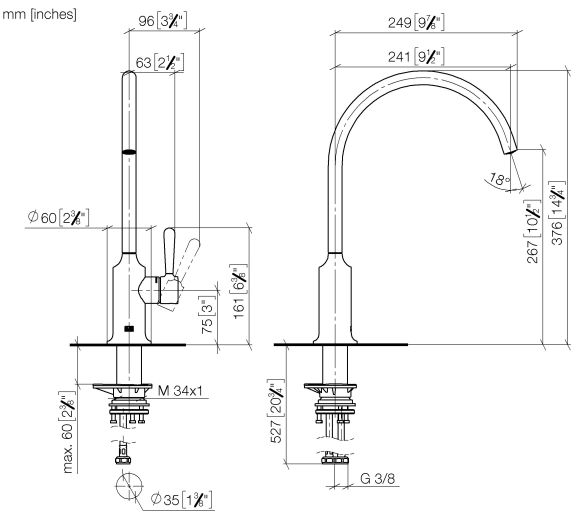
Recommended miscellaneous

VAIA Dispenser with rosette - Chrome

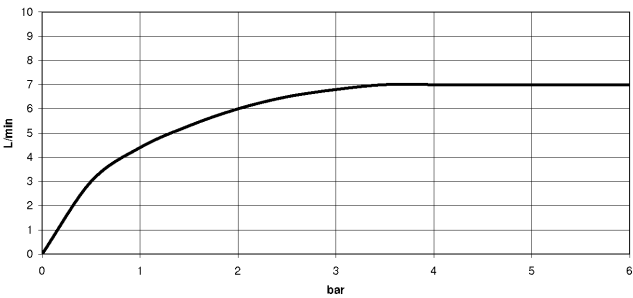
82 434 809-00



33 816 809



Flow rate chart



Codes & Standards

DIN 4109	ISO 3822	Scottish Water Byelaws	UK Water Supply Regulations
----------	----------	------------------------	-----------------------------

Ü-Zeichen



VAIA Single-lever mixer - Chrome

VAIA

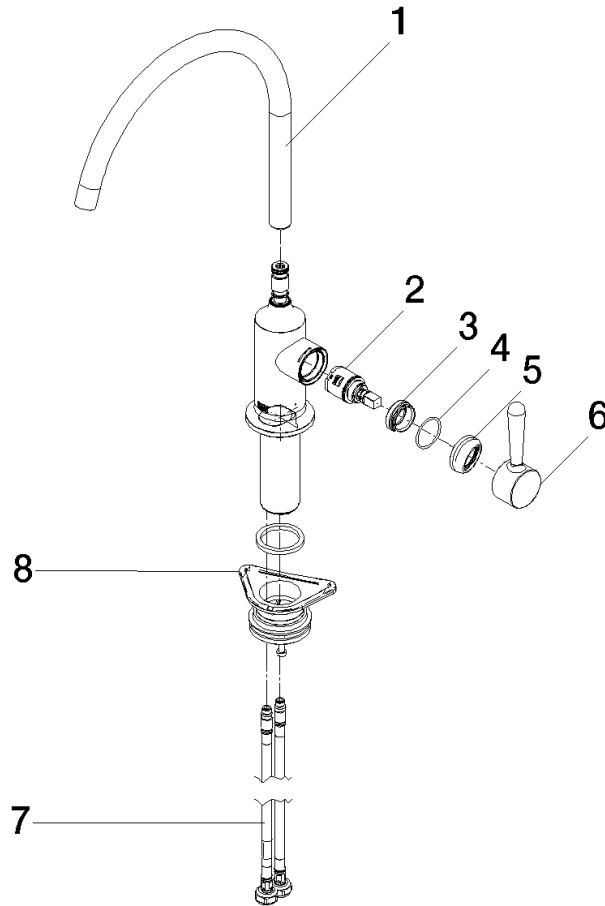
33 816 809

Certificates

LGA_29

WRAS_240602

Product version from 7/1/2023





VAIA Single-lever mixer - Chrome

VAIA

33 816 809

Spare parts list

Product version from 7/1/2023

No.	Item Number	Name	Quantity used	Delivery time
	90 28 22 396 00-00	spout	9	10