

TARA ULTRA Single-lever mixer - Brushed Durabrand (23kt Gold)

TARA ULTRA

33 816 875



- 241mm projection
- pivotable spout 360°
- air-enriched flow
- height of mixer 393 mm
- height up to aerator 240 mm
- hole diameter 35 mm
- max. flow 8 l/min at 3 bar flow pressure
- lead-free
- This product can help a building meet the requirements of Green Building Rating Systems, e.g. LEED®, BREEAM®, DGNB

	Brushed Durabrand (23kt Gold)	33 816 875-28
	Chrome	33 816 875-00
	Brushed Platinum	33 816 875-06
	Platinum	33 816 875-08
	Durabrand (23kt Gold)	33 816 875-09
	Dark Chrome	33 816 875-19
	Matte Black	33 816 875-33
	Brushed Champagne (22kt Gold)	33 816 875-46
	Champagne (22kt Gold)	33 816 875-47
	Brushed Chrome	33 816 875-93
	Brushed Dark Platinum	33 816 875-99

Recommended miscellaneous

Strainer waste with control handle - Brushed Durabrand (23kt Gold) 10 712 970-28

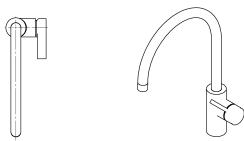


Recommended miscellaneous

Dispenser without rosette - Brushed Durabrand (23kt Gold) 82 424 970-28



33 816 875



Flow rate chart

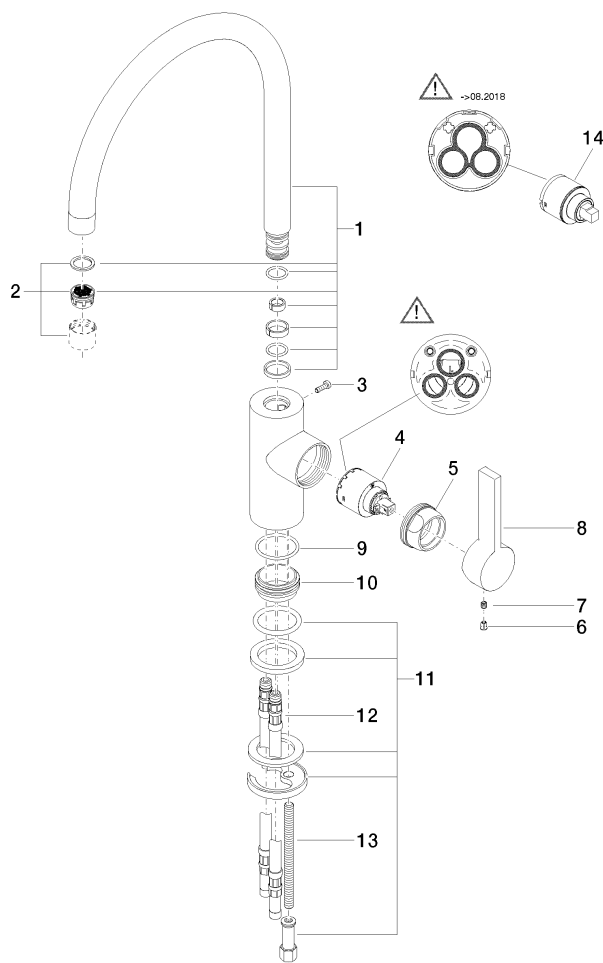


Certificates

GDV_0400195. LGA_18899. WRAS_2101012. ETA_18980.

33 816 875

Parts for other
finishes can be found
here: [Chrome](#)



Spare parts list

No.	Item Number	Name	Quantity used	Delivery time
1	90 28 22 202 02-28	spout	1	20
2	90 23 01 004 07-28	aerator	1	20
3	09 30 30 080 90	screw	1	2
4	90 15 05 061 00 90	cartridge	1	60
5	09 24 04 107-28	nut	1	20
6	09 31 20 017 90	plug	1	2
7	90 31 11 030 00 90	pin	1	2
8	09 20 79 040-28	handle	1	20
9	09 14 10 119 90	seal	1	2
10	09 28 10 109-07	ring	1	30
11	04 30 11 085 88 90	fixing set	1	2
12	04 30 04 016 00 90	hose	2	60
13	09 31 11 012 90	pin	1	2
14	90 15 05 045 00 90	cartridge	1	2