

TARA ULTRA Single-lever mixer - Matte Black

TARA ULTRA

33 816 875



- 241mm projection
- pivotable spout 360°
- air-enriched flow
- height of mixer 393 mm
- height up to aerator 240 mm
- hole diameter 35 mm
- max. flow 8 l/min at 3 bar flow pressure
- lead-free
- This product can help a building meet the requirements of Green Building Rating Systems, e.g. LEED®, BREEAM®, DGNB
- WRAS 2101012

	Matte Black	33 816 875-33
	Chrome	33 816 875-00
	Brushed Platinum	33 816 875-06
	Platinum	33 816 875-08
	Durabronze (23kt Gold)	33 816 875-09
	Dark Chrome	33 816 875-19
	Brushed Durabronze (23kt Gold)	33 816 875-28
	Brushed Champagne (22kt Gold)	33 816 875-46
	Champagne (22kt Gold)	33 816 875-47
	Brushed Chrome	33 816 875-93
	Brushed Dark Platinum	33 816 875-99

Recommended miscellaneous

Dispenser without rosette - Matte Black 82 424 970-33

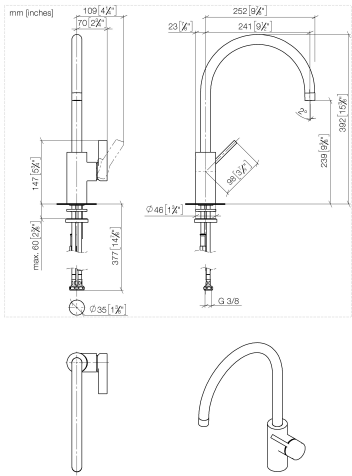


Recommended miscellaneous

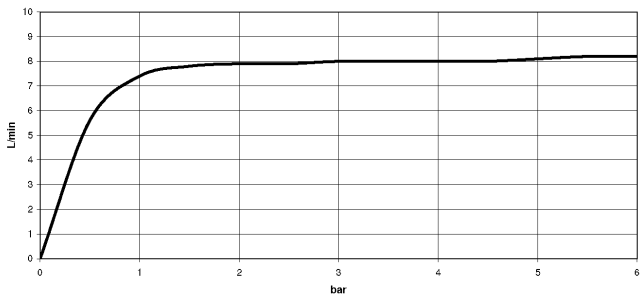
Strainer waste with control handle - Matte Black 10 712 970-33



33 816 875



Flow rate chart



Codes & Standards

DIN 4109

EN 817

Executive Order
no. 1007

ISO 3822

Scottish Water
Byelaws

UK Water Supply
Regulations

Ü-Zeichen

VA-Zeichen



TARA ULTRA Single-lever mixer - Matte Black

TARA ULTRA

33 816 875

Certificates

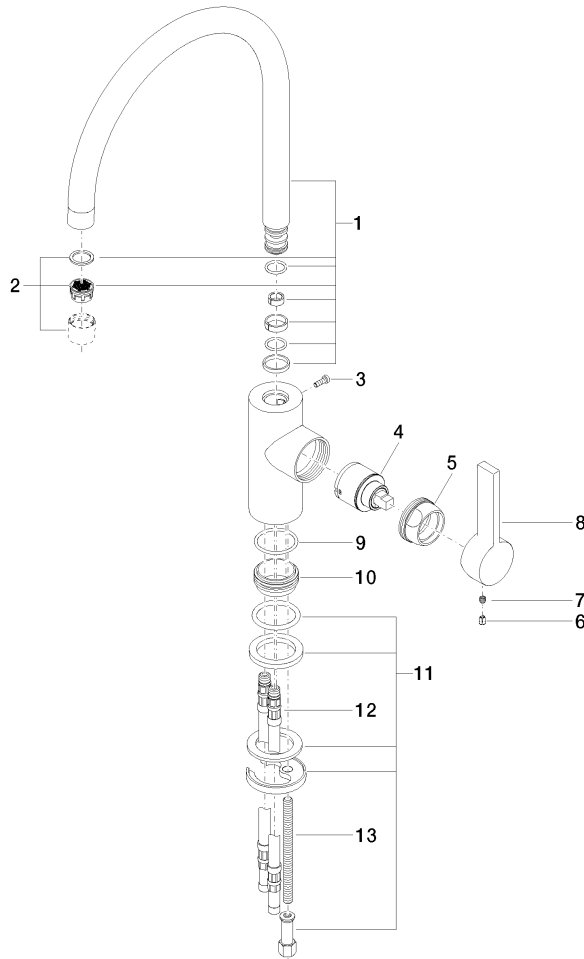
GDV_0400	LGA_18	WRAS_2101	ETA_18
----------	--------	-----------	--------

33 816 875

Product version from 5/3/2021

Product version from 6/1/2022

Parts for other
finishes can be found
here: [Chrome](#)





TARA ULTRA Single-lever mixer - Matte Black

TARA ULTRA

33 816 875

Spare parts list

Product version from 5/3/2021

Product version from 6/1/2022