

## META SQUARE Single-lever mixer Pull-down with spray function - Brushed Dark Platinum

META SQUARE

33 870 861



- 240mm projection
- pivotable spout 360°
- Optional swivel limiter available with swivel limiter set 12 823 970 90
- laminar and spray flow
- 1800 mm metal shower hose
- sprayface with anti-scaling system
- max. flow 10.4 l/min at 3 bar flow pressure
- lead-free
- This product can help a building meet the requirements of Green Building Rating Systems, e.g. LEED®, BREEAM®, DGNB

Intrinsic protection against back flow.

	Brushed Dark Platinum	33 870 861-99
	Chrome	33 870 861-00
	Brushed Platinum	33 870 861-06
	Platinum	33 870 861-08
	Durabrass (23kt Gold)	33 870 861-09
	Dark Chrome	33 870 861-19
	Brushed Durabrass (23kt Gold)	33 870 861-28
	Matte Black	33 870 861-33
	Brushed Champagne (22kt Gold)	33 870 861-46
	Champagne (22kt Gold)	33 870 861-47
	Brushed Chrome	33 870 861-93

### Recommended miscellaneous



**Swivel limitation set -**

12 823 970 90

### Recommended miscellaneous



**Strainer waste with control handle - Brushed Dark Platinum**

10 712 970-99

### Recommended miscellaneous



**Dispenser without rosette - Brushed Dark Platinum**

82 424 970-99

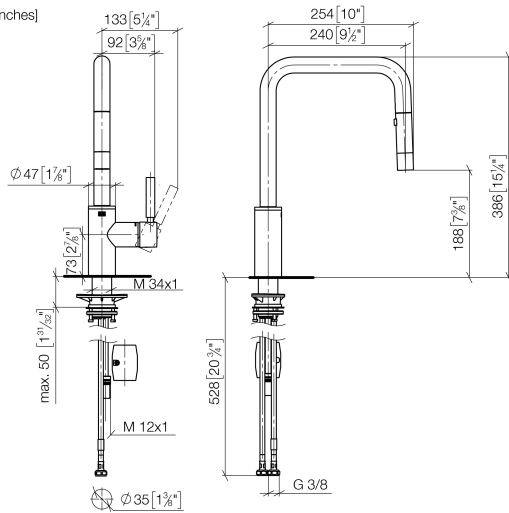
META SQUARE Single-lever mixer Pull-down with spray function - Brushed Dark Platinum

## META SQUARE

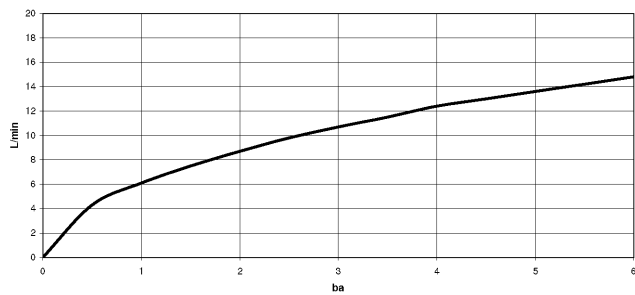
33 870 861

mm [inches]

1:5



### Flow rate chart



## Codes & Standards

DIN 4109

EN 1717

ISO 3822

Ü-Zeichen



## META SQUARE Single-lever mixer Pull-down with spray function - Brushed Dark Platinum

META SQUARE

---

33 870 861

Certificates

---

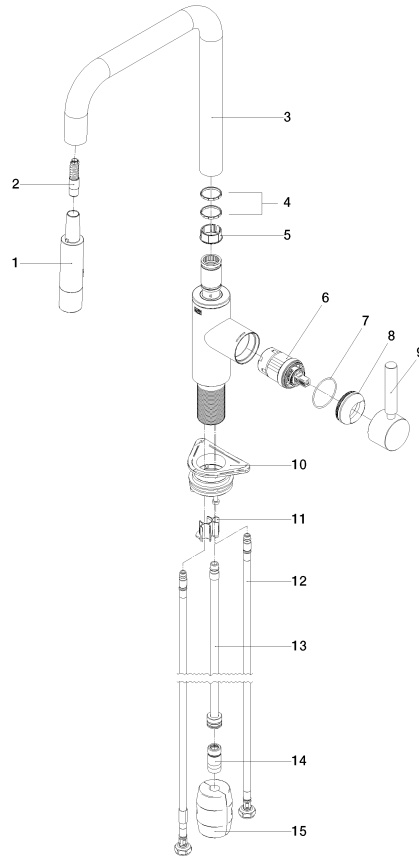
Belgaqua\_24-005-2 LGA\_38

**META SQUARE Single-lever mixer Pull-down with spray function - Brushed  
Dark Platinum**

META SQUARE

33 870 861

**Product version from 2/1/2023**





META SQUARE Single-lever mixer Pull-down with spray function - Brushed  
Dark Platinum

META SQUARE

33 870 861

Spare parts list

Product version from 2/1/2023

No.	Item Number	Name	Quantity used	Delivery time
	90 12 11 148 00-99	shower	17	30