

## Showerpipe with shower thermostat without hand shower - Brushed Platinum

IMO

34 460 979



Fits: IMO, LULU, TARA, LISSÉ, VAIA, META

- shower with fixed riser projection 453mm
- overhead shower: rain flow
- rain shower Ø 300 mm
- rain shower with anti-scale system
- max. rainshower flow 14 l/min
- Function from: 10 l/min
- rotary diverter with volume control and shut-off function
- slide-on rosettes Ø 70 mm
- height of fittings up to rain shower (bottom edge) 1009mm
- height of fittings up to top edge of elbow 1150mm
- gauge 150 mm - 13 mm
- metal shower hose 1750mm with integrated anti-twist protection
- 1/2" connection
- slide bar
- Pipe diameter 23.5 mm
- quick clearing
- WRAS 2204013

This article does not include a hand shower!  
Intrinsic protection against back flow.

|  |                                |                    |
|--|--------------------------------|--------------------|
|    | Brushed Platinum               | 34 460 979-06      |
|    | Chrome                         | 34 460 979-00      |
|    | Platinum                       | 34 460 979-08      |
|    | Dark Chrome                    | 34 460 979-19      |
|    | Dark Chrome                    | 34 460 979-19 0010 |
|    | Light Gold                     | 34 460 979-26      |
|    | Brushed Light Gold             | 34 460 979-27      |
|    | Brushed Durabronze (23kt Gold) | 34 460 979-28      |
|    | Matte Black                    | 34 460 979-33      |
|   | Brushed Bronze                 | 34 460 979-42      |
|  | Brushed Champagne (22kt Gold)  | 34 460 979-46      |
|  | Champagne (22kt Gold)          | 34 460 979-47      |
|  | Brushed Chrome                 | 34 460 979-93      |
|  | Brushed Dark Platinum          | 34 460 979-99      |

## Showerpipe with shower thermostat without hand shower - Brushed Platinum

IMO

34 460 979

### Required miscellaneous

|   |                                       |               |
|---|---------------------------------------|---------------|
|  | <b>Hand shower - Brushed Platinum</b> | 28 012 979-06 |
|---|---------------------------------------|---------------|

### Required miscellaneous

|   |                                       |               |
|---|---------------------------------------|---------------|
|  | <b>Hand shower - Brushed Platinum</b> | 28 017 979-06 |
|---|---------------------------------------|---------------|

### Required miscellaneous

|   |                                       |               |
|---|---------------------------------------|---------------|
|  | <b>Hand shower - Brushed Platinum</b> | 28 016 979-06 |
|---|---------------------------------------|---------------|


### Required miscellaneous

|   |  |                    |
|---|--|--------------------|
|  | <b>Hand shower FlowReduce - Brushed Platinum</b> | 28 018 979-06 0010 |
|---|--|--------------------|


### Required miscellaneous

|   |  |               |
|---|--|---------------|
|  | <b>SERIES-VARIOUS Hand shower - Brushed Platinum</b> | 28 029 979-06 |
|---|--|---------------|


### Required miscellaneous

|   |  |                    |
|---|--|--------------------|
|  | <b>SERIES-VARIOUS Hand shower - Brushed Platinum</b> | 28 025 979-06 0010 |
|---|--|--------------------|


### Required miscellaneous

|   |  |                    |
|---|--|--------------------|
|  | <b>Hand shower FlowReduce - Brushed Platinum</b> | 28 016 979-06 0010 |
|---|--|--------------------|

### Required miscellaneous

|   |  |                    |
|---|--|--------------------|
|  | <b>Hand shower FlowReduce - Brushed Platinum</b> | 28 012 979-06 0010 |
|---|--|--------------------|

### Required miscellaneous

|   |                                       |               |
|---|---------------------------------------|---------------|
|  | <b>Hand shower - Brushed Platinum</b> | 28 018 979-06 |
|---|---------------------------------------|---------------|

### Required miscellaneous

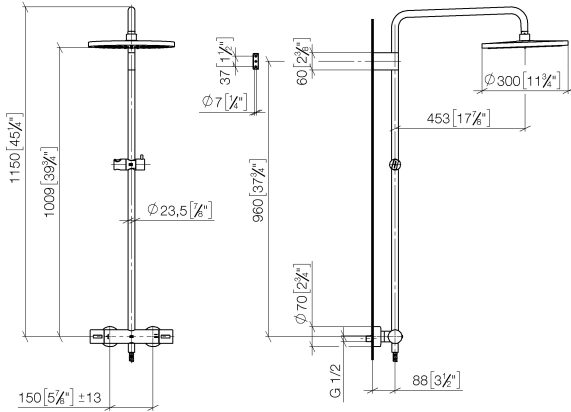
|   |  |                    |
|---|--|--------------------|
|  | <b>SERIES-VARIOUS Hand shower - Brushed Platinum</b> | 28 029 979-06 0010 |
|---|--|--------------------|

### Required miscellaneous

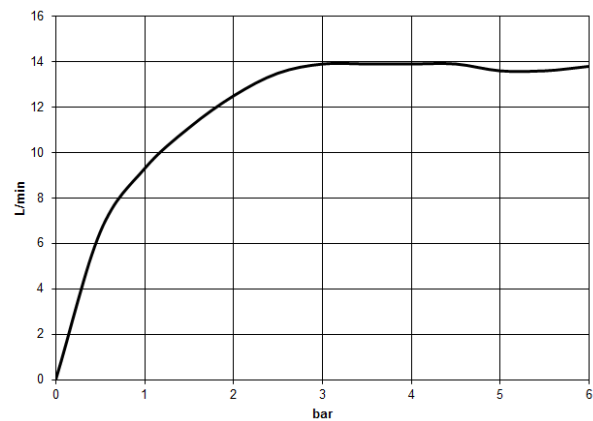
|   |  |                    |
|---|--|--------------------|
|  | <b>SERIES-VARIOUS Hand shower - Brushed Platinum</b> | 28 027 979-06 0010 |
|---|--|--------------------|

34 460 979

mm [inches]  
1:10



Flow rate chart



### Codes & Standards

DIN 4109

EN 1111

EN 1717

ISO 3822

Scottish Water  
Byelaws

UK Water Supply  
Regulations

Ü-Zeichen



## Showerpipe with shower thermostat without hand shower - Brushed Platinum

---

IMO

34 460 979

### Certificates

---

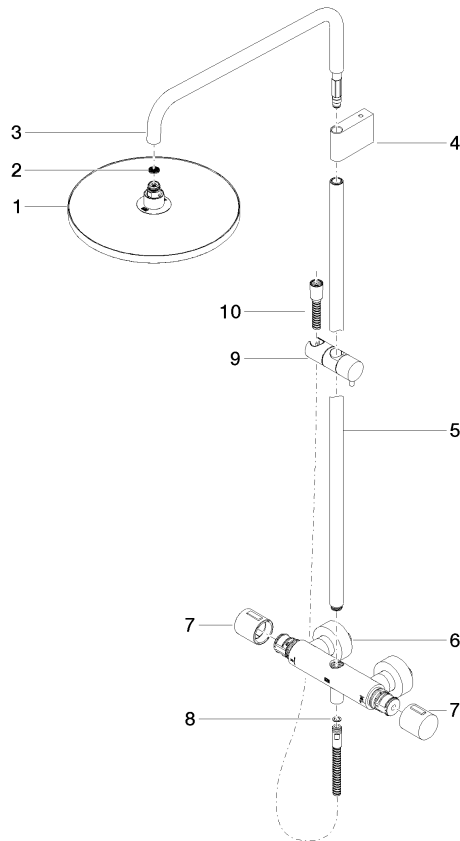
WRAS\_2204

DVGW\_DW-  
6509DN0

Belgaqua\_21-032-2 LGA\_38

**Product version from 4/1/2024**

Parts for other  
finishes can be found  
here: [Chrome](#)





Showerpipe with shower thermostat without hand shower - Brushed Platinum

IMO

34 460 979

Spare parts list

Product version from 4/1/2024

| No. | Item Number        | Name   | Quantity used | Delivery time |
|-----|--------------------|--------|---------------|---------------|
|     | 04 12 05 091 00-06 | shower | 11            | 10            |