



- concealed rough parts
- Rain panel with 3 different flow modes
- AQUACIRCLE RAIN: Circular rain curtain, max. flow rate 14 l/min (at 3 bar)
- TEMPEST RAIN: Natural rain, max. flow rate 9 l/min (at 3 bar)
- DIAMOND RAIN: Ring of rain, max. flow rate 6.8 l/min (at 3 bar)
- Ceiling installation enclosure 605 x 605 x 95 mm
- Weight: 10 kg
- min. recess depth 110 mm
- max. recess depth 150 mm
- For simultaneous control of the jet types, we recommend the xTool thermostat module

Separate LED power supply

Input LED power supply

- Input 100-240V AC 50-60Hz

Output LED power supply

- 350mA (CC)

Output specification LED power supply

- SELV (Safety Extra Low Voltage)
- Class 2

Ceiling module power supply

- 350mA (CC)
- Supply pipe 7 m






Spot lighting

- LED colour temperature approx. 3000 K
- Bulbs protected against splashing water
- Contains energy efficiency class bulbs
- Technology: LED, not dimmable
- Provided by customer: Light switch

Environment

- Not suitable for outdoor use.
- Not suitable for use in a steam room.
- Not suitable for use in chlorinated or salty environments.
- Comply with the protection zone regulations as defined in DIN VDE 0100, Part 701 (IEC 60364-7-701).

Pre-assembly kit for three-way diverter included

	Chrome	35 750 970-00
	Brushed Platinum	35 750 970-06
	Matte Black	35 750 970-33
	Brushed Champagne (22kt Gold)	35 750 970-46
	Champagne (22kt Gold)	35 750 970-47

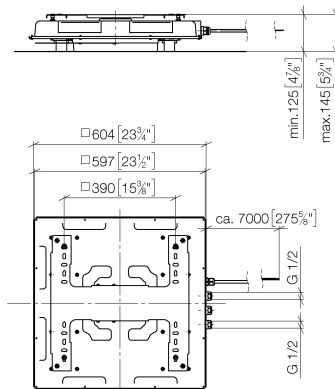
Required miscellaneous



**SERIES-VARIOUS AQUAHALO
Rain panel - Chrome**

41 750 979-00

mm [inches] 1 : 10



Codes & Standards

DIN 4109

ISO 3822

Scottish Water
Byelaws

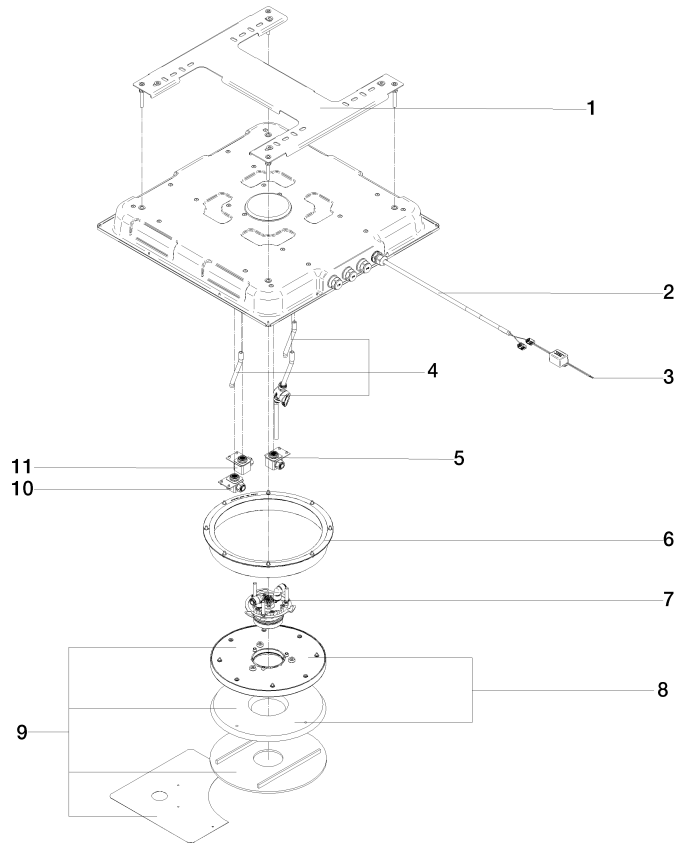
UK Water Supply
Regulations

Ü-Zeichen

Certificates and sustainability

LGA_38

WRAS_250302



Spare parts list

No.	Item Number	Name	Quantity used	Delivery time
11	90 24 04 605 01 90	cartridge	1.00	2
8	90 31 20 071 00 90	rosette	1.00	2
4	90 24 04 389 00 90	Flushing service kit	1.00	2
6	90 21 02 439 00 90	Repair kit	1.00	2
3	90 10 01 257 00 90	electronic accessories	1.00	2
5	90 24 04 605 02 90	cartridge	1.00	2
2	90 10 01 227 00 90	electronic accessories	1.00	2
10	90 24 04 605 03 90	cartridge	1.00	2
9	90 91 42 097 00 90	Installation kit	1.00	30
1	90 17 20 287 02 90	flange	1.00	2
7	90 17 09 062 16-00	Spray module Diamond Rain	1.00	10