


Concealed wall-mounted single-lever mixer -

35 860 970 90 Product version from 5/1/2022




- 2x female thread 1/2" connections
- 1x female thread 1/2" outlet for wall spout
- 1x female thread 1/2" outlet
- 2x dust cover
- anti-water packing
- soundproofing
- gauge 100 mm
- WRAS


Recommended miscellaneous

	Extension 20 mm -	12 869 970 90
	•Not suitable for combining with META PURE (36 86X 664-FF).	

Recommended miscellaneous

	Extension 20 mm -	12 870 970 90
	•Can only be combined with exposed trim parts 36 86X 664-FF.	

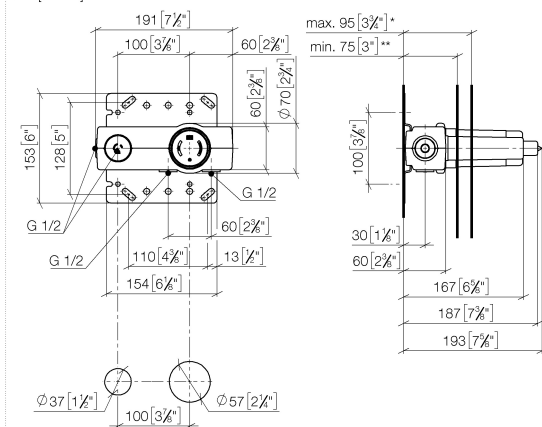
Recommended miscellaneous

	Adapter for reversed water connections -	12 880 970 90
	•Not suitable for combining with META PURE (36 86X 664-FF).	

Concealed wall-mounted single-lever mixer -

35 860 970 90 Product version from 5/1/2022

mm [inches]



	**min	*max
+ 1286997090	95 [3 3/4"]	115 [4 1/2"]
+ 1287097090	95 [3 3/4"]	115 [4 1/2"]

Flow rate chart



Codes & Standards

EN 817

Scottish Water
Byelaws

UK Water Supply
Regulations

XP P 41-280



Concealed wall-mounted single-lever mixer -

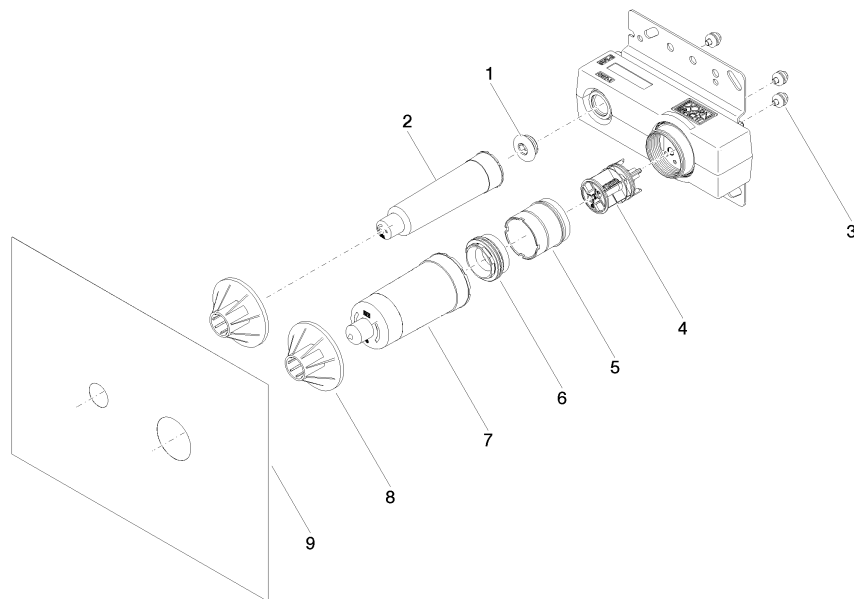
35 860 970 90 Product version from 5/1/2022

Certificates

WRAS_2010	ACS_21 ACC LY	DVGW_DW- 6512DN0	WRAS_2107
-----------	---------------	---------------------	-----------

Concealed wall-mounted single-lever mixer -

35 860 970 90 Product version from 5/1/2022



Spare parts list

No.	Item Number	Name	Quantity used	Delivery time
1	04 31 20 006 00 90	plug	1	2
2	09 21 02 173 90	cap	1	2
3	90 30 11 086 00 90	fixing set	3	60
4	90 31 20 107 00 90	plug	1	2
5	90 17 01 238 00 90	sleeve	1	2
6	90 24 04 349 00 90	threaded connector	1	2
7	09 21 02 182 90	cap	1	2
8	90 23 01 174 00 90	sleeve	2	2
9	04 14 03 074 01 90	gasket kit	1	2