

Concealed single-lever mixer with cover plate with integrated shower connection - Platinum

SERIES SPECIFIC

36 046 660
Product version from 4/1/2024



- cover plate Ø 80 mm

**Intrinsic protection against back flow.**

Intrinsic protection against back flow.

	Platinum	36 046 660-08
	Chrome	36 046 660-00
	Brushed Platinum	36 046 660-06
	Dark Chrome	36 046 660-19
	Brushed Durabrass (23kt Gold)	36 046 660-28
	Matte Black	36 046 660-33
	Brushed Dark Brass	36 046 660-39
	Brushed Bronze	36 046 660-42
	Brushed Champagne (22kt Gold)	36 046 660-46
	Champagne (22kt Gold)	36 046 660-47
	Brushed Chrome	36 046 660-93
	Brushed Dark Platinum	36 046 660-99

Required miscellaneous



- Concealed wall mounting -

35 050 970 90

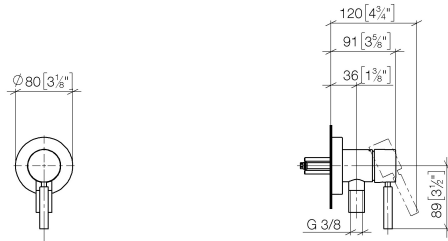
  - min. recess depth 80 mm
  - max. recess depth 105 mm

## Concealed single-lever mixer with cover plate with integrated shower connection - Platinum

SERIES SPECIFIC

36 046 660 Product version from 4/1/2024

mm [inches]



### Flow rate chart



### Codes & Standards

DIN 4109

ISO 3822

Ü-Zeichen



## Concealed single-lever mixer with cover plate with integrated shower connection - Platinum

SERIES SPECIFIC

---

36 046 660 Product version from 4/1/2024

Certificates and sustainability

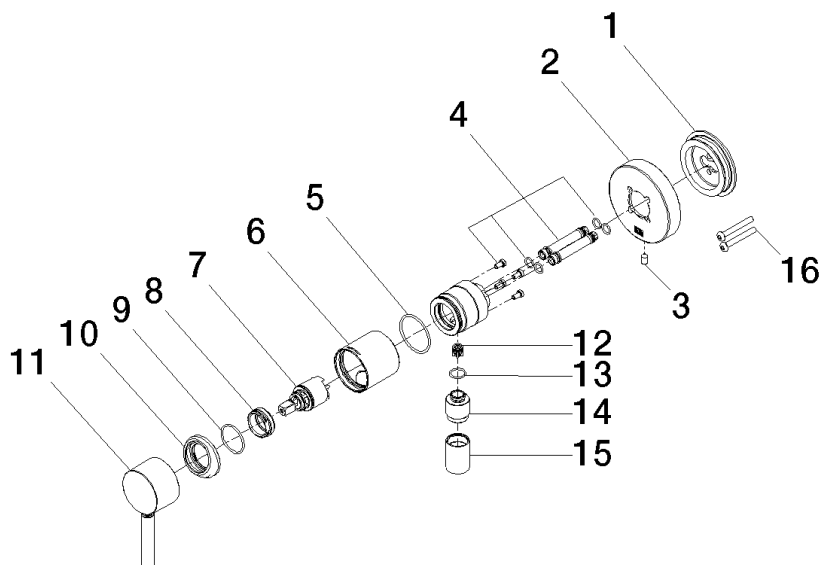
---

LGA\_38

# Concealed single-lever mixer with cover plate with integrated shower connection - Platinum

SERIES SPECIFIC

36 046 660 Product version from 4/1/2024



## Spare parts list

No.	Item Number	Name	Quantity used	Delivery time
	14 09 24 03 281-08	nipple	1.00	40
	15 90 21 02 069 00-08	cover	1.00	40
	2 90 27 66 023 00-08	rosette	1.00	-
Spare part can no longer be ordered, please order the replacement item				
	7 90 15 05 044 00 90	cartridge	1.00	2
	5 09 14 10 111 90	seal	1.00	2
	9 09 14 10 120 90	seal	1.00	2
	6 90 18 40 320 00-08	sleeve	1.00	-
Spare part can no longer be ordered, please order the replacement item				
	1 90 30 11 232 00 90	disc	1.00	2
	16 90 30 30 229 00 90	screw	2.00	2
	3 09 31 11 144 90	pin	1.00	2
	13 90 14 10 021 00 90	seal	1.00	2
	11 90 20 66 006 00-08	handle	1.00	40
	10 09 28 30 041-08	cover	1.00	40
	8 09 24 04 266 90	nut	1.00	2
	12 09 23 01 131 90	back-flow preventer	1.00	2
	4 90 24 01 046 00 90	connection	2.00	2