

Concealed single-lever mixer with cover plate with integrated shower connection - Brushed Champagne (22kt Gold)
SERIES SPECIFIC

36 046 970
Product version from 4/1/2024




- cover plate 80 x 80 mm

**Intrinsic protection against back flow.**

Intrinsic protection against back flow.

|   |                               |               |
|---|-------------------------------|---------------|
|    | Brushed Champagne (22kt Gold) | 36 046 970-46 |
|    | Chrome                        | 36 046 970-00 |
|    | Brushed Platinum              | 36 046 970-06 |
|    | Platinum                      | 36 046 970-08 |
|    | Dark Chrome                   | 36 046 970-19 |
|    | Brushed Light Gold            | 36 046 970-27 |
|    | Brushed Durabrass (23kt Gold) | 36 046 970-28 |
|    | Matte Black                   | 36 046 970-33 |
|    | Champagne (22kt Gold)         | 36 046 970-47 |
|   | Brushed Chrome                | 36 046 970-93 |
|  | Brushed Dark Platinum         | 36 046 970-99 |

Required miscellaneous

|   |   |               |
|---|---|---------------|
|  | <b>Concealed wall mounting -</b><br>•min. recess depth 80 mm<br>•max. recess depth 105 mm | 35 050 970 90 |
|---|---|---------------|

Concealed single-lever mixer with cover plate with integrated shower connection - Brushed Champagne (22kt Gold)

SERIES SPECIFIC

36 046 970    Product version from 4/1/2024



Flow rate chart



Codes & Standards

DIN 4109                      ISO 3822                      Ü-Zeichen



## Concealed single-lever mixer with cover plate with integrated shower connection - Brushed Champagne (22kt Gold)

---

SERIES SPECIFIC

36 046 970 Product version from 4/1/2024

Certificates and sustainability

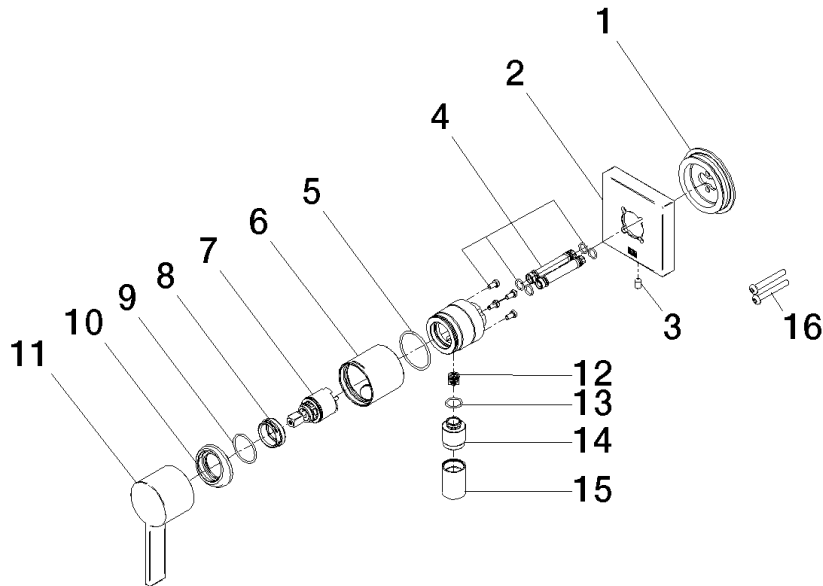
---

LGA\_38

## Concealed single-lever mixer with cover plate with integrated shower connection - Brushed Champagne (22kt Gold)

SERIES SPECIFIC

36 046 970 Product version from 4/1/2024



### Spare parts list

| No.  | Item Number        | Name                | Quantity used | Delivery time |
|--|--------------------|---------------------|---------------|---------------|
| 6  | 90 18 40 320 00-46 | sleeve              | 1.00          | -             |
| Spare part can no longer be ordered, please order the replacement item |                    |                     |               |               |
| 15   | 90 21 02 069 00-46 | cover               | 1.00          | 30            |
| 13   | 90 14 10 021 00 90 | seal                | 1.00          | 2             |
| 10   | 09 28 30 041-46    | cover               | 1.00          | 30            |
| 7  | 90 15 05 044 00 90 | cartridge           | 1.00          | 2             |
| 12   | 09 23 01 131 90    | back-flow preventer | 1.00          | 2             |
| 9  | 09 14 10 120 90    | seal                | 1.00          | 2             |
| 1  | 90 30 11 232 00 90 | disc                | 1.00          | 2             |
| 5  | 09 14 10 111 90    | seal                | 1.00          | 2             |
| 4  | 90 24 01 046 00 90 | connection          | 2.00          | 2             |
| 14   | 09 24 03 281-46    | nipple              | 1.00          | 30            |
| 8  | 09 24 04 266 90    | nut                 | 1.00          | 2             |
| 3  | 09 31 11 144 90    | pin                 | 1.00          | 2             |
| 2  | 90 27 97 046 00-46 | rosette             | 1.00          | 30            |
| 16   | 90 30 30 229 00 90 | screw               | 2.00          | 2             |
| 11   | 09 20 97 063-00    | handle              | 1.00          | 10            |