

Concealed single-lever mixer with cover plate - Brushed Champagne (22kt Gold)

36 060 660    Product version from 6/29/2020

- cover plate Ø 78 mm
- WRAS



	Brushed Champagne (22kt Gold)	36 060 660-46
	Chrome	36 060 660-00
	Brushed Platinum	36 060 660-06
	Platinum	36 060 660-08
	Dark Chrome	36 060 660-19
	Light Gold	36 060 660-26
	Brushed Light Gold	36 060 660-27
	Brushed Durabrass (23kt Gold)	36 060 660-28
	Matte Black	36 060 660-33
	Brushed Bronze	36 060 660-42
	Champagne (22kt Gold)	36 060 660-47
	Brushed Chrome	36 060 660-93
	Brushed Dark Platinum	36 060 660-99

Required miscellaneous

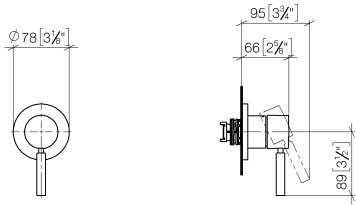


- Concealed wall-mounted single-lever mixer -

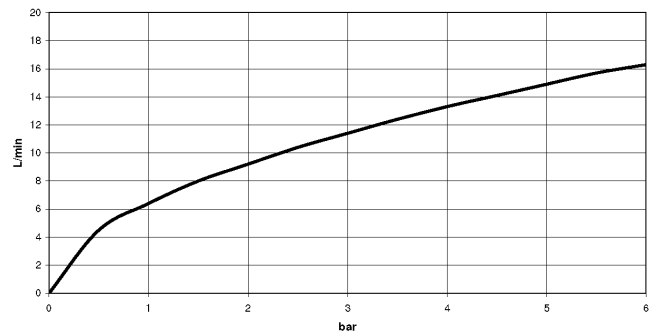
35 860 970 90
- max. recess depth mm
  - min. recess depth mm

**Concealed single-lever mixer with cover plate - Brushed Champagne (22kt Gold)**

36 060 660    Product version from 6/29/2020  
mm [inches]



**Flow rate chart**



**Codes & Standards**

DIN 4109                      ISO 3822                      Ü-Zeichen



## Concealed single-lever mixer with cover plate - Brushed Champagne (22kt Gold)

---

36 060 660 Product version from 6/29/2020

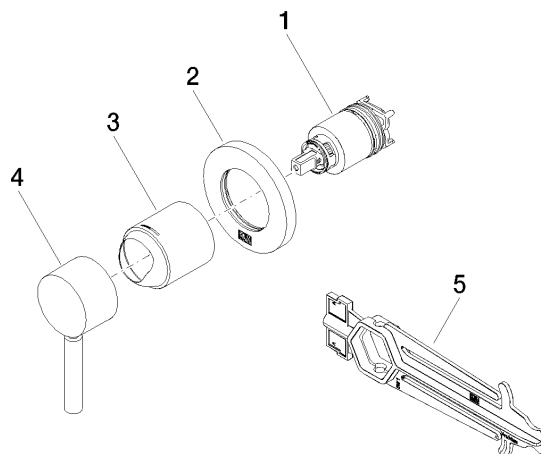
### Certificates

---

LGA\_29

## Concealed single-lever mixer with cover plate - Brushed Champagne (22kt Gold)

36 060 660 Product version from 6/29/2020



### Spare parts list

No.	Item Number	Name	Quantity used	Delivery time
1	90 15 05 064 01 90	cartridge	1	2
2	90 27 66 009 00-46	rosette	1	30
3	09 11 02 293-46	cover	1	30
4	90 20 66 006 00-46	handle	1	30
5	90 30 09 064 00 90	key	1	2