

VAIA Concealed single-lever mixer with cover plate - Brushed Champagne (22kt Gold)

VAIA

36 060 809 Product version from 4/1/2025

- cover plate 80 x 80 mm



	Brushed Champagne (22kt Gold)	36 060 809-46
	Chrome	36 060 809-00
	Brushed Platinum	36 060 809-06
	Platinum	36 060 809-08
	Dark Chrome	36 060 809-19
	Brushed Durabronze (23kt Gold)	36 060 809-28
	Brushed Dark Brass	36 060 809-39
	Brushed Bronze	36 060 809-42
	Champagne (22kt Gold)	36 060 809-47
	Brushed Dark Platinum	36 060 809-99

Required miscellaneous

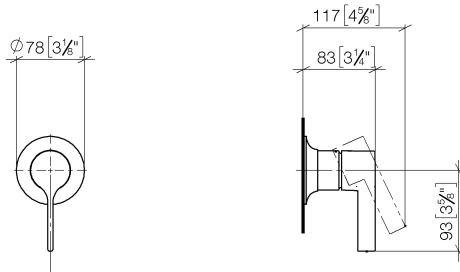


Concealed wall-mounted single-lever mixer - 35 860 970 90
•max. recess depth 95 mm
•min. recess depth 80 mm

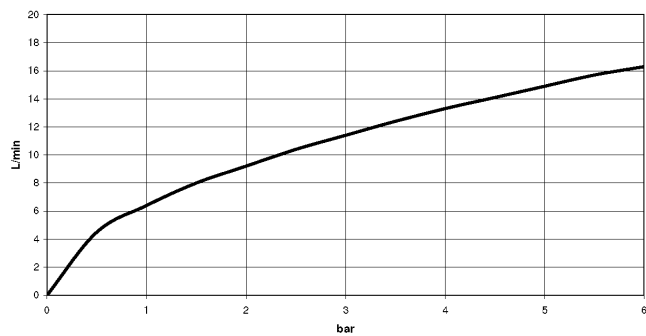
VAIA Concealed single-lever mixer with cover plate - Brushed Champagne (22kt Gold)

VAIA

36 060 809 Product version from 4/1/2025
mm [inches]



Flow rate chart



Codes & Standards

DIN 4109

ISO 3822

Ü-Zeichen



VAIA Concealed single-lever mixer with cover plate - Brushed Champagne (22kt Gold)

VAIA

36 060 809 Product version from 4/1/2025

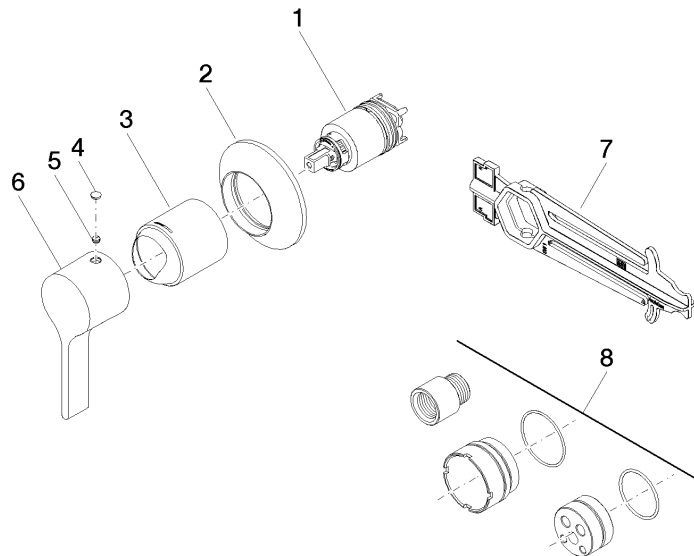
Certificates and sustainability

LGA_29

VAIA Concealed single-lever mixer with cover plate - Brushed Champagne (22kt Gold)

VAIA

36 060 809 Product version from 4/1/2025



Spare parts list

No.	Item Number	Name	Quantity used	Delivery time
1	90 15 05 064 01 90	cartridge	1.00	2
4	90 31 20 087 00-46	plug	1.00	30
2	90 27 80 032 00-46	rosette	1.00	30
6	09 20 80 021-46	handle	1.00	30
3	09 11 02 293-46	cover	1.00	30
5	90 31 11 063 00 90	pin	1.00	2
7	90 30 09 064 00 90	key	1.00	2
8	12 869 970 90	Extension 20 mm -	1.00	2