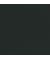




36 120 626



- automatic diverter
- cover plate Ø 150 mm
- WRAS

	Matte Black	36 120 626-33
	Chrome	36 120 626-00
	Brushed Chrome	36 120 626-93

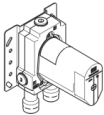
Required miscellaneous



**SERIES SPECIFIC Concealed single-lever mixer -** 35 070 970 90

- max. recess depth 105 mm
- min. recess depth 80 mm

Required miscellaneous

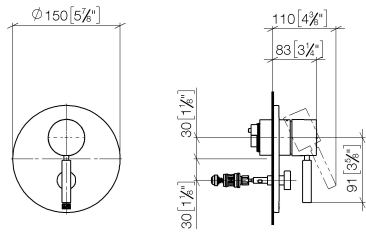


**SERIES SPECIFIC Concealed single-lever mixer with backflow preventor -** 35 071 970 90

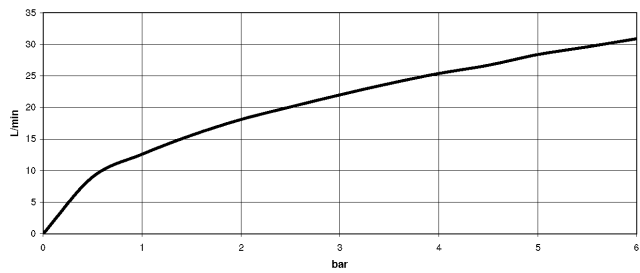
- max. recess depth 105 mm
- min. recess depth 80 mm

36 120 626

mm [inches]



Flow rate chart



### Codes & Standards

DIN 4109	ISO 3822	Scottish Water Byelaws	UK Water Supply Regulations
----------	----------	------------------------	-----------------------------

Ü-Zeichen



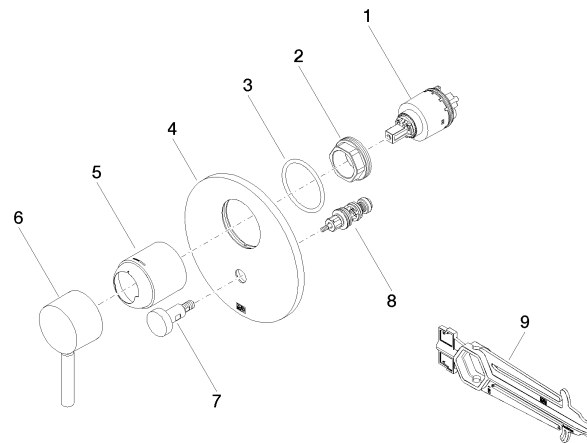
36 120 626

Certificates and sustainability

LGA\_19

WRAS\_2207

36 120 626



## Spare parts list

No.	Item Number	Name	Quantity used	Delivery time
2	09 24 04 448 90	nut	1.00	2
5	09 11 02 360-33	cover	1.00	30
6	90 20 66 004 00-33	handle	1.00	30
7	90 31 09 139 00-33	pull-rod	1.00	30
1	90 15 05 039 00 90	cartridge	1.00	2
3	09 14 10 084 90	seal	1.00	2
4	09 11 02 261-33	plate	1.00	30
8	90 21 34 081 00 90	diverter	1.00	2
9	90 30 09 064 00 90	key	1.00	2