




36 120 626



- automatic diverter
- cover plate Ø 150 mm
- WRAS

| | | |
|---|----------------|---------------|
|  | Brushed Chrome | 36 120 626-93 |
|  | Chrome | 36 120 626-00 |
|  | Matte Black | 36 120 626-33 |

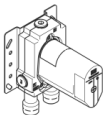
Required miscellaneous



SERIES SPECIFIC Concealed single-lever mixer - 35 070 970 90

- max. recess depth 105 mm
- min. recess depth 80 mm

Required miscellaneous

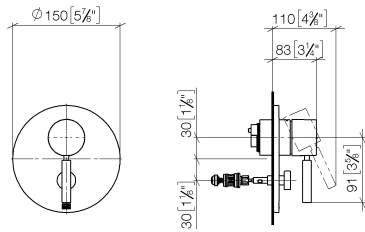


SERIES SPECIFIC Concealed single-lever mixer with backflow preventor - 35 071 970 90

- max. recess depth 105 mm
- min. recess depth 80 mm

36 120 626

mm [inches]



Flow rate chart



Codes & Standards

DIN 4109

ISO 3822

Scottish Water
Byelaws

UK Water Supply
Regulations

Ü-Zeichen



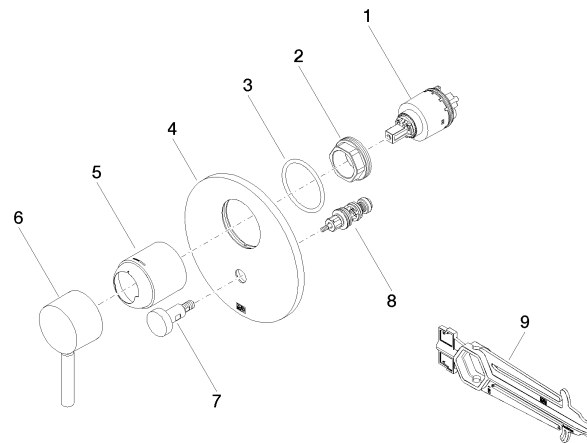
36 120 626

Certificates and sustainability

LGA_19

WRAS_2207

36 120 626



Spare parts list

| No. | Item Number | Name | Quantity used | Delivery time |
|-----|--------------------|-----------|---------------|---------------|
| 2 | 09 24 04 448 90 | nut | 1.00 | 2 |
| 6 | 90 20 66 004 00-93 | handle | 1.00 | 20 |
| 4 | 09 11 02 261-93 | plate | 1.00 | 20 |
| 3 | 09 14 10 084 90 | seal | 1.00 | 2 |
| 8 | 90 21 34 081 00 90 | diverter | 1.00 | 2 |
| 5 | 09 11 02 360-93 | cover | 1.00 | 20 |
| 7 | 90 31 09 139 00-93 | pull-rod | 1.00 | 20 |
| 1 | 90 15 05 039 00 90 | cartridge | 1.00 | 2 |
| 9 | 90 30 09 064 00 90 | key | 1.00 | 2 |