



LULU Concealed two-way diverter - Brushed Platinum

LULU

36 200 710    Product version from 4/1/2022



- rotary diverter
- rosette 60 x 78 mm
- WRAS

|   |                  |               |
|---|------------------|---------------|
|  | Brushed Platinum | 36 200 710-06 |
|  | Chrome           | 36 200 710-00 |

Required miscellaneous



- |                                     |               |
|-------------------------------------|---------------|
| <b>Concealed two-way diverter -</b> | 35 202 970 90 |
| •max. recess depth 155 mm           |               |
| •min. recess depth 85 mm            |               |

mm [inches]



Flow rate chart



### Codes & Standards

|          |          |                        |                             |
|----------|----------|------------------------|-----------------------------|
| DIN 4109 | ISO 3822 | Scottish Water Byelaws | UK Water Supply Regulations |
|----------|----------|------------------------|-----------------------------|

Ü-Zeichen



## LULU Concealed two-way diverter - Brushed Platinum

---

LULU

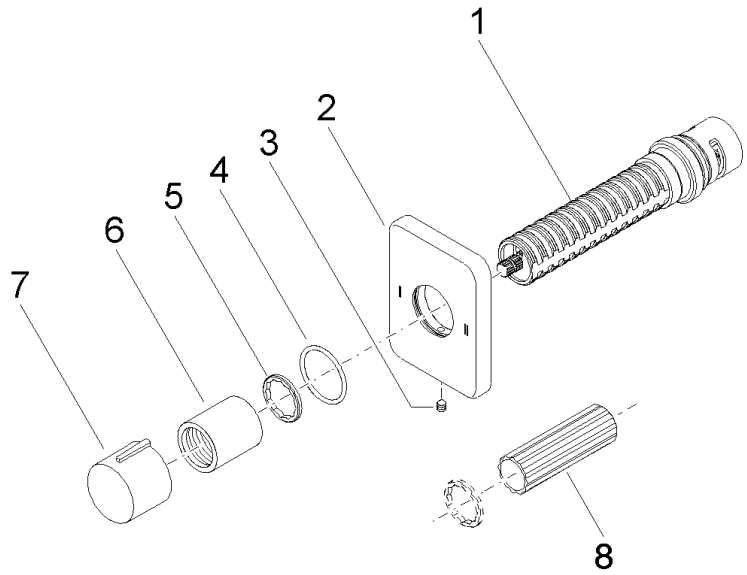
36 200 710 Product version from 4/1/2022

Certificates and sustainability

---

LGA\_38

WRAS\_2307



**Spare parts list**

| No. | Item Number        | Name     | Quantity used | Delivery time |
|-----|--------------------|----------|---------------|---------------|
| 6   | 09 21 02 070-06    | cover    | 1.00          | 10            |
| 5   | 09 16 01 025 90    | ring     | 1.00          | 2             |
| 2   | 09 27 71 114-06    | rosette  | 1.00          | 60            |
| 7   | 09 20 97 030-06    | handle   | 1.00          | 10            |
| 1   | 90 90 03 304 10 90 | diverter | 1.00          | 2             |
| 4   | 90 14 10 063 00 90 | seal     | 1.00          | 2             |
| 8   | 90 30 09 010 00 90 | key      | 1.00          | 2             |
| 3   | 90 31 11 007 00 90 | pin      | 1.00          | 2             |