

TARA Concealed two-way diverter - Brushed Platinum

TARA

36 200 892 Product version from 4/1/2022



- rotary diverter
- rosette 60 mm
- WRAS

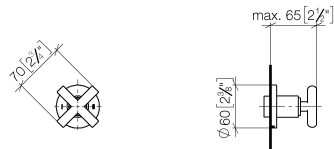
| | | |
|---|-------------------------------------|---------------|
|  | Brushed Platinum | 36 200 892-06 |
|  | Chrome | 36 200 892-00 |
|  | Platinum | 36 200 892-08 |
|  | Dark Chrome | 36 200 892-19 |
|  | Brushed Durabronze (23kt Gold) | 36 200 892-28 |
|  | Matte Black | 36 200 892-33 |
|  | Brushed Dark Brass | 36 200 892-39 |
|  | Brushed Bronze | 36 200 892-42 |
|  | Brushed Champagne (22kt Gold) | 36 200 892-46 |
|  | Champagne (22kt Gold) | 36 200 892-47 |
|  | Brushed Chrome | 36 200 892-93 |
|  | Brushed Dark Platinum | 36 200 892-99 |

Required miscellaneous

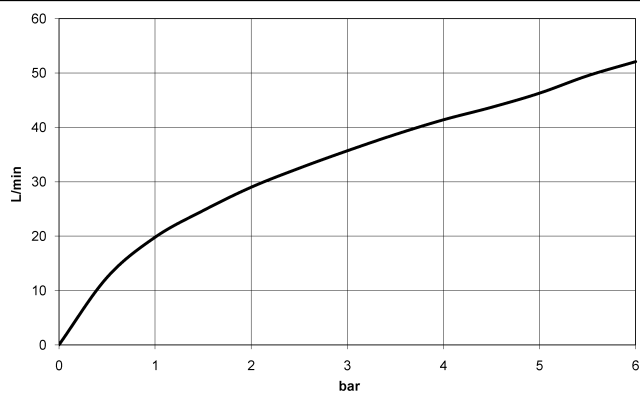


- Concealed two-way diverter -** 35 202 970 90
- max. recess depth 160 mm
 - min. recess depth 85 mm

mm [inches]



Flow rate chart



Codes & Standards

DIN 4109

ISO 3822

Scottish Water
Byelaws

UK Water Supply
Regulations

Ü-Zeichen



TARA Concealed two-way diverter - Brushed Platinum

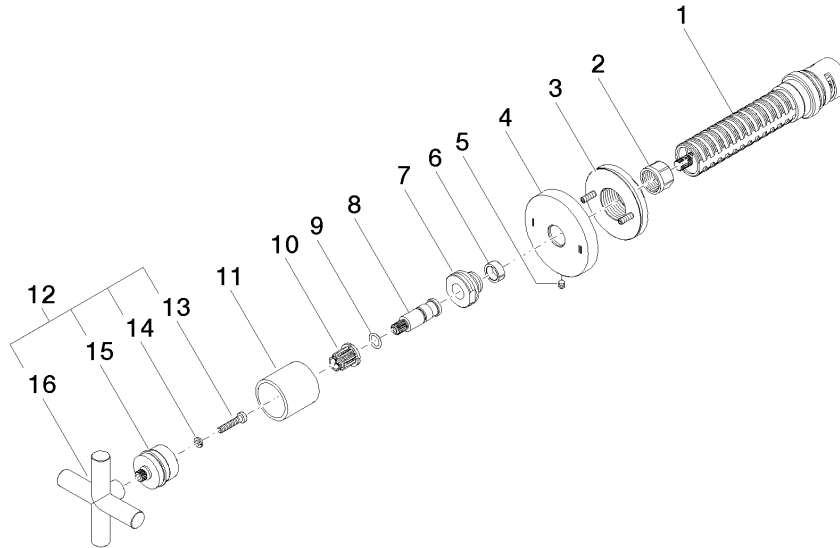
TARA

36 200 892 Product version from 4/1/2022

Certificates and sustainability

LGA_38

WRAS_2307



Spare parts list

| No. | Item Number | Name | Quantity used | Delivery time |
|-----|--------------------|------------|---------------|---------------|
| 8 | 09 29 06 022 90 | spindle | 1.00 | 2 |
| 7 | 09 24 05 002 90 | nipple | 1.00 | 2 |
| 10 | 90 12 12 002 00 90 | fixing cap | 1.00 | 2 |
| 15 | 90 12 12 219 00-06 | base | 1.00 | 10 |
| 1 | 90 90 03 304 10 90 | diverter | 1.00 | 2 |
| 16 | 09 20 89 010-06 | handle | 1.00 | 60 |
| 3 | 90 21 02 181 00 90 | disc | 1.00 | 2 |
| 11 | 09 21 02 144-06 | sleeve | 1.00 | 10 |
| 4 | 09 27 89 118-06 | rosette | 1.00 | 10 |
| 5 | 09 31 11 294 90 | pin | 1.00 | 2 |
| 6 | 90 14 15 020 03 90 | ring | 1.00 | 2 |
| 9 | 90 14 10 060 00 90 | seal | 1.00 | 2 |
| 12 | 90 20 89 010 10-06 | handle | 1.00 | 10 |
| 13 | 90 30 30 075 00 90 | screw | 1.00 | 2 |
| 2 | 90 23 30 023 00 90 | nut | 1.00 | 2 |
| 14 | 90 30 11 029 00 90 | disc | 1.00 | 2 |