

## xTOOL Concealed thermostat without volume control 3/4" - Chrome

SERIES SPECIFIC

36 503 979 Product version up to 1/1/2022



- cover plate Ø 124 mm
- temperature control handle with safety limit stop at 38°C
- thermostat cartridge
- WRAS

	Chrome	36 503 979-00
	Brushed Platinum	36 503 979-06
	Platinum	36 503 979-08
	Durabrand (23kt Gold)	36 503 979-09
	Dark Chrome	36 503 979-19
	Light Gold	36 503 979-26
	Brushed Light Gold	36 503 979-27
	Brushed Durabrand (23kt Gold)	36 503 979-28
	Matte Black	36 503 979-33
	Brushed Dark Brass	36 503 979-39
	Brushed Bronze	36 503 979-42
	Brushed Champagne (22kt Gold)	36 503 979-46
	Champagne (22kt Gold)	36 503 979-47
	Brushed Chrome	36 503 979-93
	Brushed Dark Platinum	36 503 979-99

### Required miscellaneous



**xTOOL Concealed thermostat module without volume control -** 35 503 970 90  
 • max. recess depth 110 mm  
 • min. recess depth 85 mm

### Required miscellaneous



**xGRID Installation track 555 mm -** 12 360 970 90

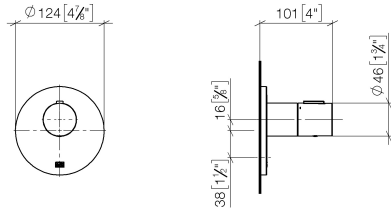
### Recommended miscellaneous



**xGRID Attachment set for integrating in the dry wall construction -** 12 340 970 90

36 503 979 Product version up to 1/1/2022

mm [inches]



### Flow rate chart



### Codes & Standards

DIN 4109

EN 1111

ISO 3822

Scottish Water  
Byelaws

UK Water Supply  
Regulations

Ü-Zeichen



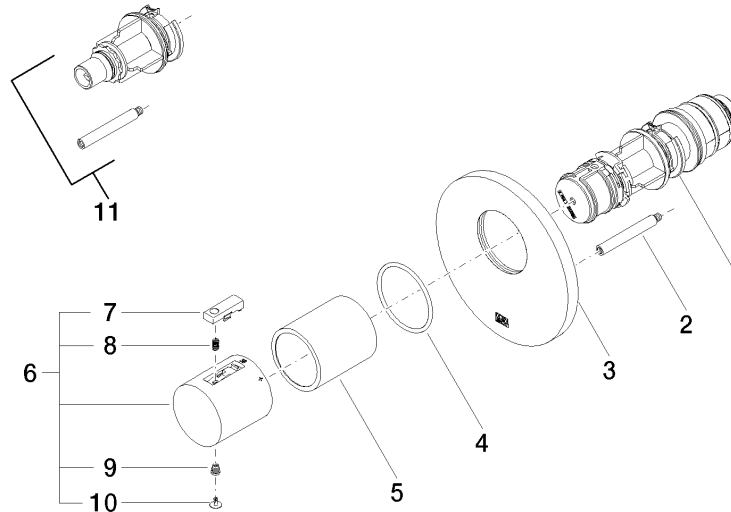
xTOOL Concealed thermostat without volume control 3/4" - Chrome

SERIES SPECIFIC

36 503 979    Product version up to 1/1/2022

Certificates and sustainability

WRAS_2011	DVGW_DW- 6512DN0	LGA_29	LGA_29
-----------	---------------------	--------	--------



## Spare parts list

No.	Item Number	Name	Quantity used	Delivery time
8	90 16 02 027 00 90	spring	1.00	2
3	09 11 02 162-00	cover	1.00	60
6	90 17 33 004 00-00	handle	1.00	10
11	12 178 970 90	Extension 46 mm -	1.00	2
2	90 31 09 095 00 90	bar	1.00	2
10	90 31 20 049 00-00	plug	1.00	10
4	90 14 10 049 00 90	seal	1.00	2
5	90 21 02 112 00-00	sleeve	1.00	10
9	90 30 30 136 00 90	screw	1.00	2
7	90 21 33 011 00-13	handle	1.00	2
1	90 15 02 063 00 90	cartridge	1.00	2