

WATER FAN vertical Concealed body spray - Brushed Bronze

SERIES-VARIOUS

36 513 979    Product version from 4/1/2024



- AQUAPRESSURE FLOW, max. flow rate 10 l/min (at 3 bar)
- water jet adjustable

Technical data:

- cover plate 240 x 60 mm
- 1/2" connection

	Brushed Bronze	36 513 979-42
	Chrome	36 513 979-00
	Brushed Platinum	36 513 979-06
	Platinum	36 513 979-08
	Dark Chrome	36 513 979-19
	Light Gold	36 513 979-26
	Brushed Light Gold	36 513 979-27
	Brushed Durabrass (23kt Gold)	36 513 979-28
	Matte Black	36 513 979-33
	Brushed Dark Brass	36 513 979-39
	Brushed Champagne (22kt Gold)	36 513 979-46
	Champagne (22kt Gold)	36 513 979-47
	Brushed Chrome	36 513 979-93
	Brushed Dark Platinum	36 513 979-99

Required miscellaneous



- Concealed wall installation box -

35 206 970 90
- min. recess depth 100 mm
  - max. recess depth 173 mm

Recommended miscellaneous



- xGRID Attachment set for integrating in the dry wall construction -

12 340 970 90

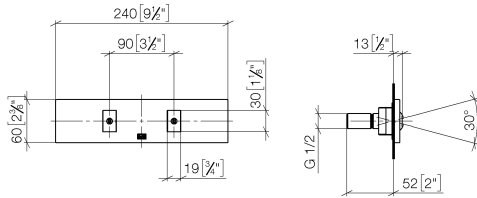
Required miscellaneous



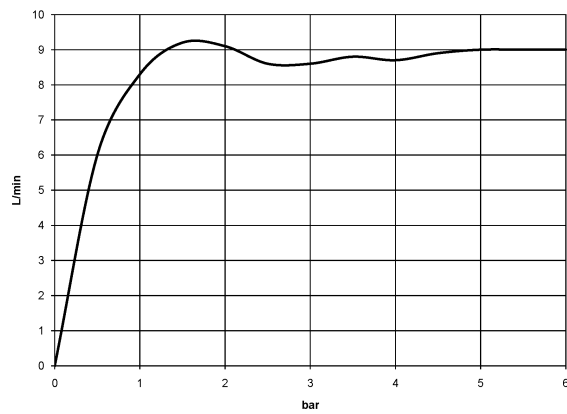
- xGRID Installation track 555 mm -

12 360 970 90

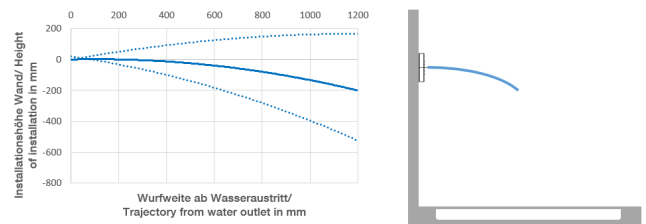
mm [inches]



**Flow rate chart**



**Trajectory diagram**



**Codes & Standards**

DIN 4109

ISO 3822

Scottish Water  
Byelaws

UK Water Supply  
Regulations

Ü-Zeichen



## WATER FAN vertical Concealed body spray - Brushed Bronze

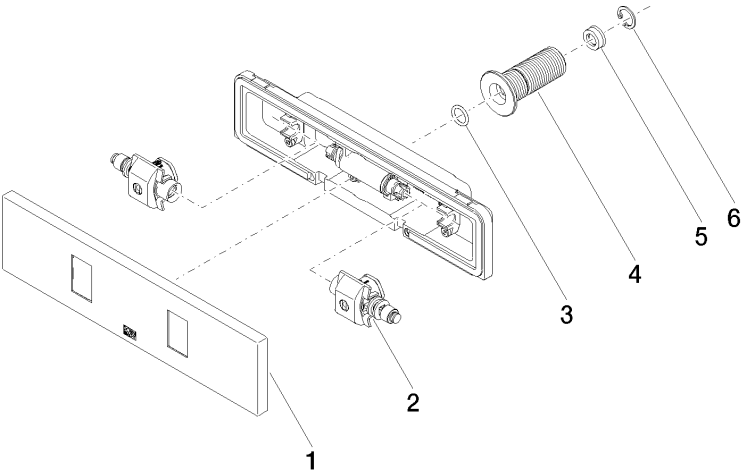
SERIES-VARIOUS

36 513 979 Product version from 4/1/2024

Certificates and sustainability

LGA\_29

WRAS\_250602



Spare parts list

No.	Item Number	Name	Quantity used	Delivery time
	4 09 24 05 015 90	nipple	1.00	2
	5 09 23 01 134 90	flow reducer	1.00	2
	2 90 31 10 013 00 90	insert	1.00	2
	3 09 14 10 003 90	seal	1.00	2
	1 90 27 99 002 00-42	insert	1.00	30
	6 09 16 01 014 90	ring	1.00	2