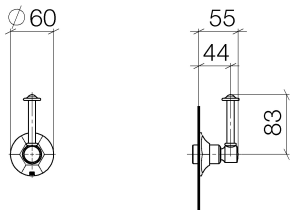


36 607 371

- WRAS 2011026, 2010066



36 607 371



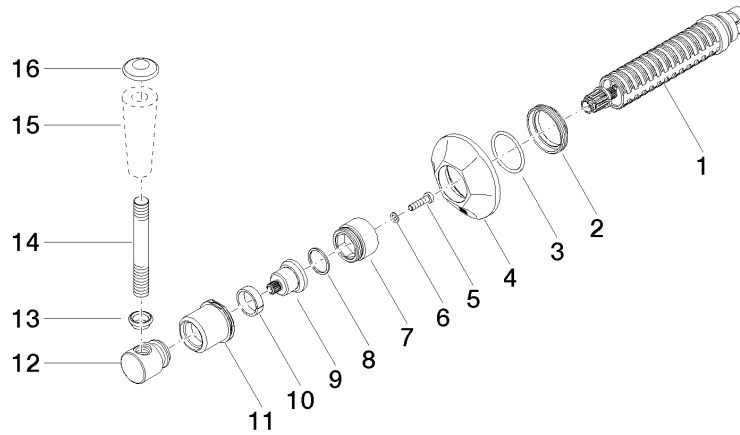
Codes & Standards

ASME A112.18.1	cUPC	DIN 4109	EN 1111
EN 200	ISO 3822	Scottish Water Byelaws	UK Water Supply Regulations

Ü-Zeichen

Certificates

IAPMO_4976	DVGW_DW-6501DN0	WRAS_2010	LGA_29	LGA_29
DVGW_DW-6512DN0	WRAS_2011			





## MADISON Wall valve clockwise closing 1/2" - Platinum

MADISON

36 607 371

### **Spare parts list**