

META Wall valve clockwise closing 1/2" - Brushed Dark Platinum

META

36 607 660

Product version from 4/1/2024

- rosette Ø 60 mm
  - head part with cut-to-length spindle and sleeve



	Brushed Dark Platinum	36 607 660-99
	Chrome	36 607 660-00
	Brushed Platinum	36 607 660-06
	Dark Chrome	36 607 660-19
	Light Gold	36 607 660-26
	Brushed Light Gold	36 607 660-27
	Matte Black	36 607 660-33
	Brushed Dark Brass	36 607 660-39
	Brushed Bronze	36 607 660-42
	Brushed Champagne (22kt Gold)	36 607 660-46
	Champagne (22kt Gold)	36 607 660-47
	Brushed Chrome	36 607 660-93

Required miscellaneous



- Wall valve 1/2" -

•min. recess depth 75 mm

•max. recess depth 145 mm

35 607 970 90

36 607 660 Product version from 4/1/2024



#### Codes & Standards

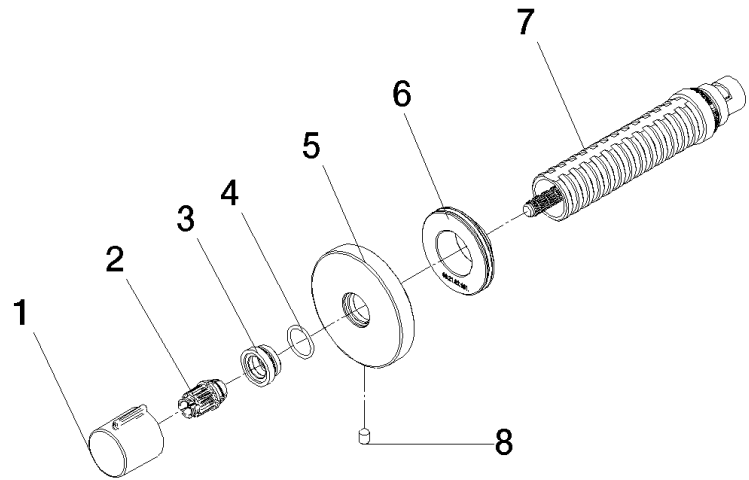
DIN 4109

ISO 3822

Ü-Zeichen

#### Certificates and sustainability

LGA\_38



### Spare parts list

No.	Item Number	Name	Quantity used	Delivery time
	3 09 12 12 043-99	base	1.00	20
	6 09 21 02 151 90	sleeve	1.00	2
	8 09 31 11 004 90	pin	1.00	60
	2 09 12 12 005 90	fixing cap	1.00	2
	4 09 14 10 017 90	seal	1.00	2
	7 90 90 03 202 00 90	top	1.00	2
	1 09 20 98 001-99	handle	1.00	20
	5 90 27 67 021 94-99	rosette	1.00	20