

VAIA Wall valve clockwise closing 1/2" - Brushed Platinum
VAIA

36 607 819
Product version from 4/1/2025



- rosette Ø 60 mm
- head part with cut-to-length spindle and sleeve
- WRAS

|  |                                     |               |
|--|-------------------------------------|---------------|
|   | Brushed Platinum                    | 36 607 819-06 |
|   | Chrome                              | 36 607 819-00 |
|   | Platinum                            | 36 607 819-08 |
|   | Dark Chrome                         | 36 607 819-19 |
|   | Brushed Durabronze<br>(23kt Gold)   | 36 607 819-28 |
|   | Brushed Dark<br>Brass               | 36 607 819-39 |
|   | Brushed Bronze                      | 36 607 819-42 |
|   | Brushed<br>Champagne (22kt<br>Gold) | 36 607 819-46 |
|   | Champagne (22kt<br>Gold)            | 36 607 819-47 |
|  | Brushed Dark<br>Platinum            | 36 607 819-99 |

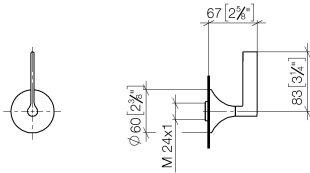
Required miscellaneous



- Wall valve 1/2" -**
35 607 970 90

  - max. recess depth 145 mm
  - min. recess depth 75 mm

mm [inches]



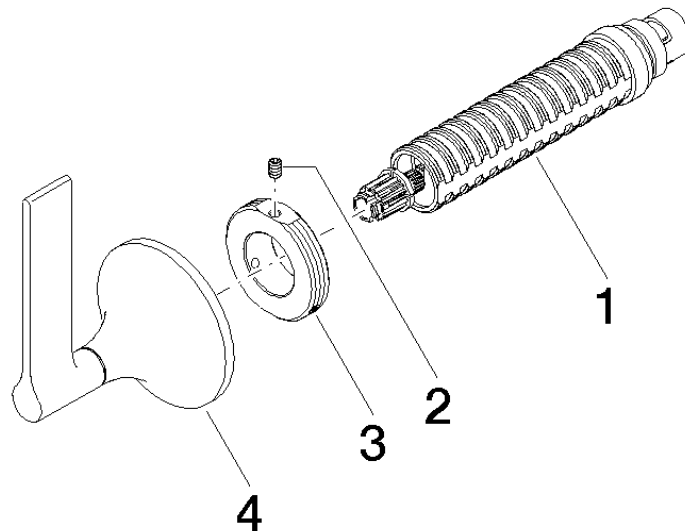
Codes & Standards

|                |          |                           |                                |
|----------------|----------|---------------------------|--------------------------------|
| ASME A112.18.1 | cUPC     | DIN 4109                  | EN 1111                        |
| EN 200         | ISO 3822 | Scottish Water<br>Byelaws | UK Water Supply<br>Regulations |

Ü-Zeichen

Certificates and sustainability

|                     |              |        |           |                     |
|---------------------|--------------|--------|-----------|---------------------|
| DVGW_DW-<br>6501DN0 | WRAS_2011    | LGA_29 | WRAS_2010 | DVGW_DW-<br>6512DN0 |
| LGA_29              | IAPMO_4976 ( |        |           |                     |



## Spare parts list

| No. | Item Number        | Name   | Quantity used | Delivery time |
|-----|--------------------|--------|---------------|---------------|
| 3   | 09 21 02 163 90    | disc   | 1.00          | 2             |
| 4   | 90 20 80 015 00-06 | handle | 1.00          | 10            |
| 2   | 09 31 11 008 90    | pin    | 1.00          | 2             |
| 1   | 90 90 03 143 00 90 | top    | 1.00          | 2             |