

IMO Wall valve anti-clockwise closing 3/4" - Brushed Platinum

IMO


36 608 980    Product version from 6/1/2024



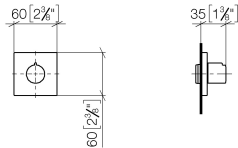
- rosette 60 x 60 mm
- head part with cut-to-length spindle and sleeve
- WRAS

	Brushed Platinum	36 608 980-06
	Chrome	36 608 980-00
	Platinum	36 608 980-08
	Dark Chrome	36 608 980-19
	Brushed Light Gold	36 608 980-27
	Brushed Durabronze (23kt Gold)	36 608 980-28
	Matte Black	36 608 980-33
	Brushed Chrome	36 608 980-93
	Brushed Dark Platinum	36 608 980-99

Required miscellaneous

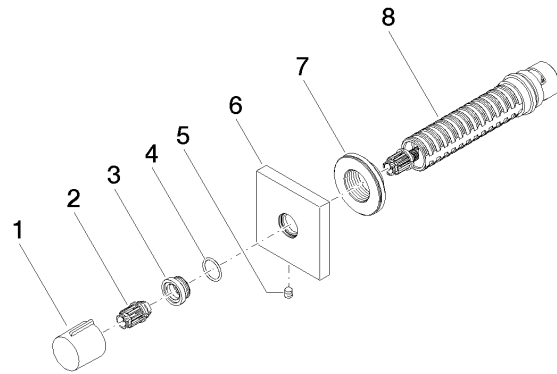
- |   |   |               |
|---|---|---------------|
|  | <b>Wall valve 3/4" -</b><br>• max. recess depth 145 mm<br>• min. recess depth 75 mm | 35 608 970 90 |
|---|---|---------------|

mm [inches]



Codes & Standards			
ASME A112.18.1	cUPC	Scottish Water Byelaws	UK Water Supply Regulations

Certificates and sustainability	
WRAS_2010	IAPMO_4976 (



### Spare parts list

No.	Item Number	Name	Quantity used	Delivery time
4	09 14 10 017 90	seal	1.00	2
7	09 21 02 151 90	sleeve	1.00	2
1	09 20 98 001-06	handle	1.00	10
8	90 90 03 128 00 90	top	1.00	2
6	09 27 98 014-06	rosette	1.00	10
3	09 12 12 043-06	base	1.00	10
2	09 12 12 005 90	fixing cap	1.00	2
5	90 31 11 004 00 90	pin	1.00	2