

Single sink - Brushed Stainless Steel

SERIES-VARIOUS

38 450 004    Product version from 1/1/2025



- under-mounted
  - 450 x 400 mm
  - sink depth 175 mm
  - suitable for base units 500 mm
  - Radius 15 mm
- Drain and overflow set not included in the scope of supply. See Required miscellaneous.**
- Drain and overflow set not included in the scope of supply. See Required miscellaneous.

Required miscellaneous



Pop-up waste and overflow with  
electronic control

10 410 004-86

Required miscellaneous



Basin Waste mechanical

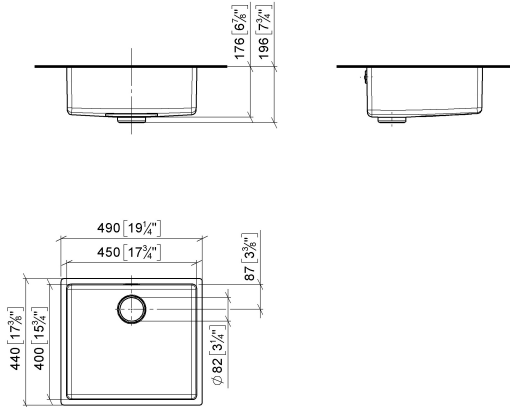
10 405 004-86

## Single sink - Brushed Stainless Steel

SERIES-VARIOUS

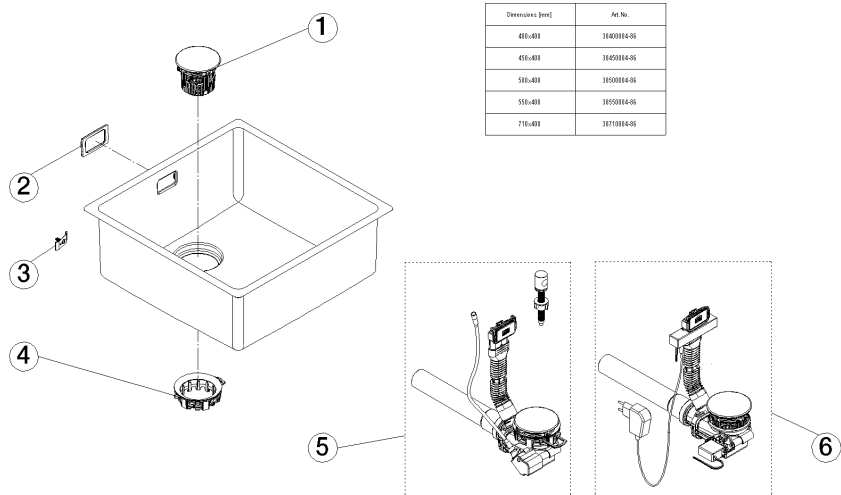
38 450 004 Product version from 1/1/2025

mm [inches]  
1:10



## Certificates and sustainability

Leistungserklärung\_ declaration\_of\_perfo  
DOD rmance\_DOD



### Spare parts list

No.	Item Number	Name	Quantity used	Delivery time
3	90 38 00 010 00 90	fixing set	1.00	30
6	10 410 004-86	Pop-up waste and overflow with electronic control	1.00	2
2	90 11 01 125 00 90	seal	1.00	30
1	90 11 01 135 00-86	strainer	1.00	30
5	10 405 004-86	Basin Waste mechanical	1.00	2
4	90 11 01 211 00 90	pop-up waste	1.00	30