

RAINMOON Rain panel - Matte White

41 610 979



- exposed trim parts
- Rain panel with 2 different spray modes
- AQUACIRCLE RAIN: Circular rain curtain, max. flow rate 6.8 l/min (at 3 bar)
- TEMPEST RAIN: Natural rain, max. flow rate 5 l/min (at 3 bar)
- Matt white cover, RAL 9003
- Outer diameter 1240 mm, opening diameter 450 mm
- with anti-scale system
- Weight 22.5 kg
- Control elements not included among the items supplied

Ambient lighting

- LED colour temperature approx. 2700 K
- Bulbs protected against splashing water
- Technology: LED, not dimmable
- Provided by customer: Light switch

Environment

- Not suitable for use in a steam room.
- Not suitable for outdoor use.
- Not suitable for use in chlorinated or salty environments.
- Comply with the protection zone regulations as defined in DIN VDE 0100, Part 701 (IEC 60364-7-701).

Rain panel cover for adaptation to ceiling colour available in all RAL colours, price and delivery time on request

Rain panel cover for adaptation to ceiling colour available in all RAL colours, price and delivery time on request

Required miscellaneous



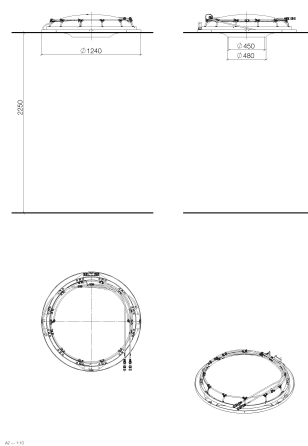
RAINMOON Concealed ceiling installation box -

35 610 970 90

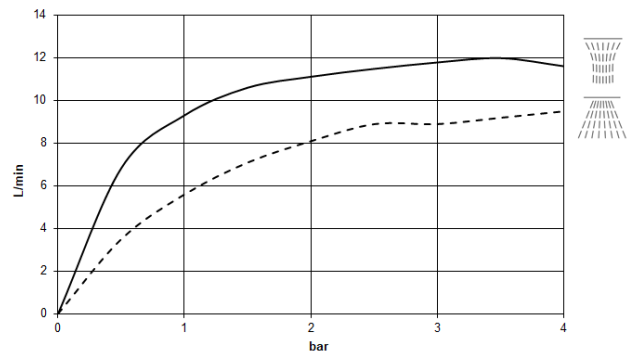
- Ceiling installation enclosure 1356 x 1356 x 290 mm
- concealed rough parts
- Opening diameter 1252 mm
- min. recess depth mm

RAINMOON Rain panel - Matte White

41 610 979



Flow rate chart



Codes & Standards

| | | |
|----------|----------|-----------|
| DIN 4109 | ISO 3822 | Ü-Zeichen |
|----------|----------|-----------|



RAINMOON Rain panel - Matte White

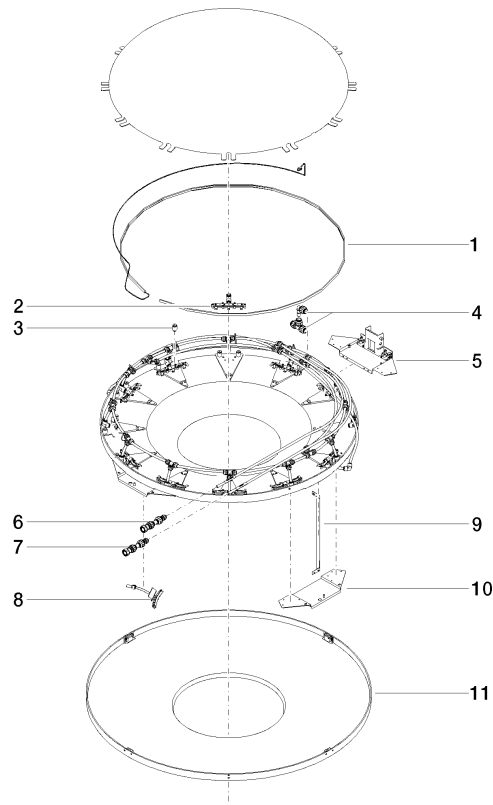
41 610 979

Certificates

LGA_29

RAINMOON Rain panel - Matte White

41 610 979



Spare parts list

| No. | Item Number | Name | Quantity used | Delivery time |
|-----|--------------------|-----------------------|---------------|---------------|
| 1 | 90 10 01 183 00 90 | lamp | 1 | 2 |
| 2 | 90 17 09 056 01 90 | jet module | 12 | 60 |
| 3 | 90 18 40 222 00 90 | adaptor | 24 | 2 |
| 4 | 90 24 04 321 00 90 | threaded connector | 1 | 2 |
| 5 | 90 17 20 211 00 90 | joint | 1 | 2 |
| 6 | 90 24 04 346 01 90 | connection AQUACIRCLE | 1 | 2 |
| 7 | 90 24 04 346 02 90 | connection TEMPEST | 1 | 2 |
| 8 | 90 17 09 057 01 90 | jet module | 12 | 2 |
| 9 | 90 17 20 217 00 90 | holder | 4 | 2 |
| 10 | 90 17 20 216 00 90 | holder | 3 | 2 |
| 11 | 90 11 02 325 00 90 | cover | 1 | 2 |