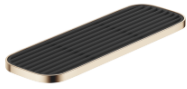




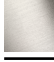











## Shelf wall model - Brushed Champagne (22kt Gold)

SERIES SPECIFIC

83 482 970 Product version from 10/1/2023



- width 300mm
- height 26 mm
- 100mm projection
- without grid element

	Brushed Champagne (22kt Gold)	83 482 970-46
	Chrome	83 482 970-00
	Brushed Platinum	83 482 970-06
	Platinum	83 482 970-08
	Dark Chrome	83 482 970-19
	Light Gold	83 482 970-26
	Brushed Light Gold	83 482 970-27
	Brushed Durabrass (23kt Gold)	83 482 970-28
	Matte Black	83 482 970-33
	Brushed Dark Brass	83 482 970-39
	Brushed Bronze	83 482 970-42
	Champagne (22kt Gold)	83 482 970-47
	Brushed Chrome	83 482 970-93
	Brushed Dark Platinum	83 482 970-99

### Required miscellaneous

**Grid element - Matte Black** 82 482 970-33  
•plastic grid elements

### Required miscellaneous

**Grid element - Creamy White** 82 482 970-51  
•plastic grid elements

### Required miscellaneous

**Grid element - Light Grey** 82 482 970-52  
•plastic grid elements

### Required miscellaneous

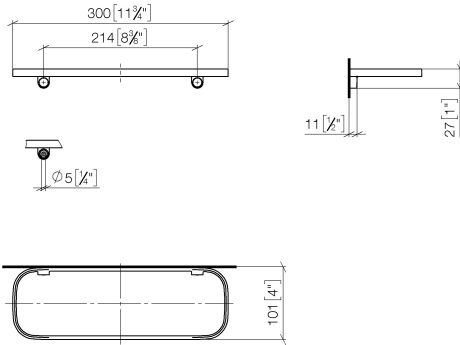
**Grid element - Taupe** 82 482 970-53  
•plastic grid elements

## Shelf wall model - Brushed Champagne (22kt Gold)

SERIES SPECIFIC

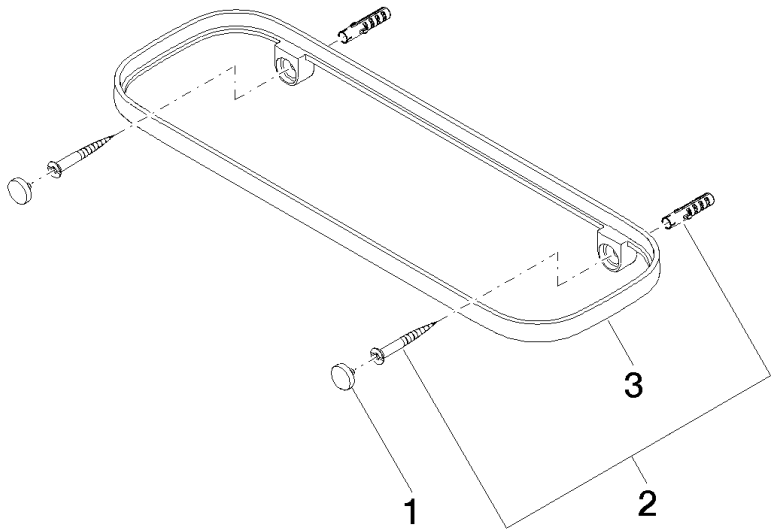
83 482 970 Product version from 10/1/2023

mm [inches]



83 482 970    Product version from 10/1/2023

Parts for other  
 finishes can be found  
 here: [Chrome](#)



Spare parts list

No.	Item Number	Name	Quantity used	Delivery time
3	08 17 97 578-46	holder	1.00	30
2	05 30 31 002 00 90	fixing set	1.00	2
1	90 30 30 520 00-46	set	1.00	30