

## Tissue holder without cover - Brushed Platinum

LISSÉ

83 500 979



- width 150mm
- height 95 mm
- rosette Ø 40 mm
- 40mm projection

Fits: LISSÉ, META

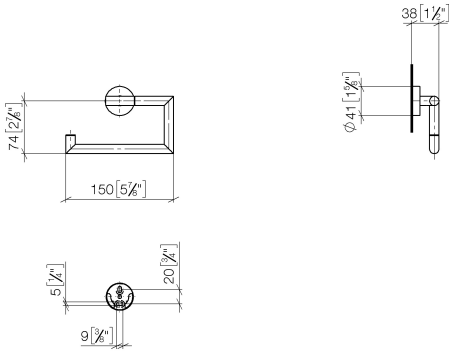
	Brushed Platinum	83 500 979-06
	Chrome	83 500 979-00
	Dark Chrome	83 500 979-19
	Light Gold	83 500 979-26
	Brushed Light Gold	83 500 979-27
	Matte Black	83 500 979-33
	Brushed Bronze	83 500 979-42
	Brushed Champagne (22kt Gold)	83 500 979-46
	Champagne (22kt Gold)	83 500 979-47
	Brushed Chrome	83 500 979-93
	Brushed Dark Platinum	83 500 979-99

## Tissue holder without cover - Brushed Platinum

LISSE

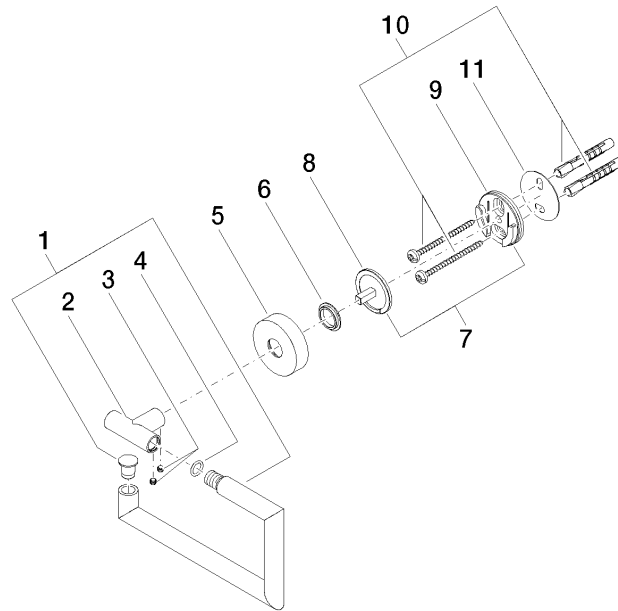
83 500 979

mm [inches]



**Product version from 7/1/2023**

Parts for other  
finishes can be found  
here: [Chrome](#)





## Tissue holder without cover - Brushed Platinum

LISSE

83 500 979

### Spare parts list

#### Product version from 7/1/2023

No.	Item Number	Name	Quantity used	Delivery time
	90 28 22 626 00-06	holder	12	-

Spare part can no longer be ordered, please order the replacement item