

TARA Showerpipe 220 mm - Brushed Dark Platinum

TARA

ST 050 303 4892



- shower with fixed riser projection 420mm
- Rain shower: PURE RAIN, max. flow rate 7 l/min (at 3 bar)
- rain shower Ø 220 mm
- rain shower with anti-scale system
- Hand shower: COMPACT RAIN, max. flow rate 15 l/min (at 3 bar)
- spray head Ø 100mm
- rotary diverter for fixed-riser shower/hand shower
- height of fittings up to rain shower (bottom edge) 1007mm
- height of fittings up to top edge of elbow 1167mm
- rosette for shower holder Ø 55mm
- rosette for wall mounting Ø 57mm
- rosette for shower mixer Ø 65mm
- gauge 150 mm - 13 mm
- 1500 mm metal shower hose
- 1/2" connection
- Pipe diameter 20 mm

	Brushed Dark Platinum	ST 050 303 4892-99
	Chrome	ST 050 303 4892-00
	Brushed Platinum	ST 050 303 4892-06
	Platinum	ST 050 303 4892-08
	Dark Chrome	ST 050 303 4892-19
	Brushed Light Gold	ST 050 303 4892-27
	Brushed Durabrass (23kt Gold)	ST 050 303 4892-28
	Matte Black	ST 050 303 4892-33
	Brushed Bronze	ST 050 303 4892-42
	Brushed Champagne (22kt Gold)	ST 050 303 4892-46
	Champagne (22kt Gold)	ST 050 303 4892-47
	Brushed Chrome	ST 050 303 4892-93

Individual components of this set

You need the following components for this set



1x 26 633 892-99



1x 28 018 979-99

TARA Showerpipe 220 mm - Brushed Dark Platinum

TARA

ST 050 303 4892



- shower with fixed riser projection 420mm
- overhead shower: rain flow
- rain shower Ø 220 mm
- rain shower with anti-scale system
- max. rainshower flow 7 l/min
- rotary diverter for fixed-riser shower/hand shower
- height of fittings up to rain shower (bottom edge) 1007mm
- height of fittings up to top edge of elbow 1167mm
- rosette for shower holder Ø 55mm
- rosette for wall mounting Ø 57mm
- rosette for shower mixer Ø 65mm
- gauge 150 mm - 13 mm
- 1500 mm metal shower hose
- 1/2" connection
- Pipe diameter 20 mm
- quick clearing
- This product can help a building meet the requirements of Green Building Rating Systems, e.g. LEED®, BREEAM®, DGNB
- WRAS 2204012

This article does not include a hand shower!

Intrinsic protection against back flow.

	Brushed Dark Platinum	26 633 892-9
	Chrome	26 633 892-0
	Brushed Platinum	26 633 892-0
	Platinum	26 633 892-0
	Dark Chrome	26 633 892-1
	Brushed Durabrass (23kt Gold)	26 633 892-2
	Matte Black	26 633 892-3
	Brushed Bronze	26 633 892-4
	Brushed Champagne (22kt Gold)	26 633 892-4
	Champagne (22kt Gold)	26 633 892-4
	Brushed Chrome	26 633 892-9

ST 050 303 4892

9
—
0
—
6
—
8
—
9
—
8
—
3
—
2
—
6
—
7
—
3
—

Required miscellaneous



Hand shower - Brushed Dark Platinum 28 015 979-99

Required miscellaneous



Hand shower - Brushed Dark Platinum 28 017 979-99

Required miscellaneous



Hand shower FlowReduce - Brushed Dark Platinum 28 012 979-99 0010

Required miscellaneous



Hand shower - Brushed Dark Platinum 28 016 979-99

Required miscellaneous



Hand shower - Brushed Dark Platinum 28 012 979-99

Required miscellaneous



Hand shower FlowReduce - Brushed Dark Platinum 28 016 979-99 0010

Required miscellaneous



Hand shower - Brushed Dark Platinum 28 018 979-99

Required miscellaneous



Hand shower FlowReduce - Brushed Dark Platinum 28 018 979-99 0010

Required miscellaneous



SERIES-VARIOUS Hand shower - Brushed Dark Platinum 28 029 979-99 0010

Required miscellaneous



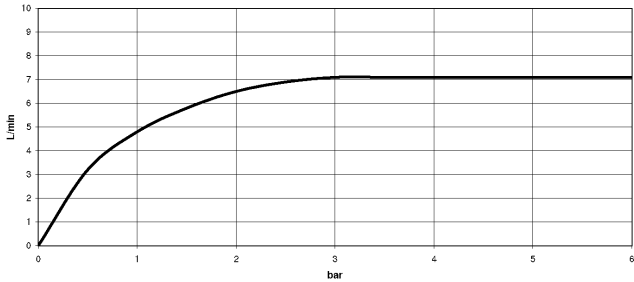
SERIES-VARIOUS Hand shower - Brushed Dark Platinum 28 025 979-99 0010

Required miscellaneous



SERIES-VARIOUS Hand shower - Brushed Dark Platinum 28 027 979-99 0010

Flow rate chart



Certificates

Belgaqua_21-023-2 LGA_38

WRAS_2204

Codes & Standards

DIN 4109	EN 1717	ISO 3822	Scottish Water Byelaws
UK Water Supply Regulations	Ü-Zeichen		



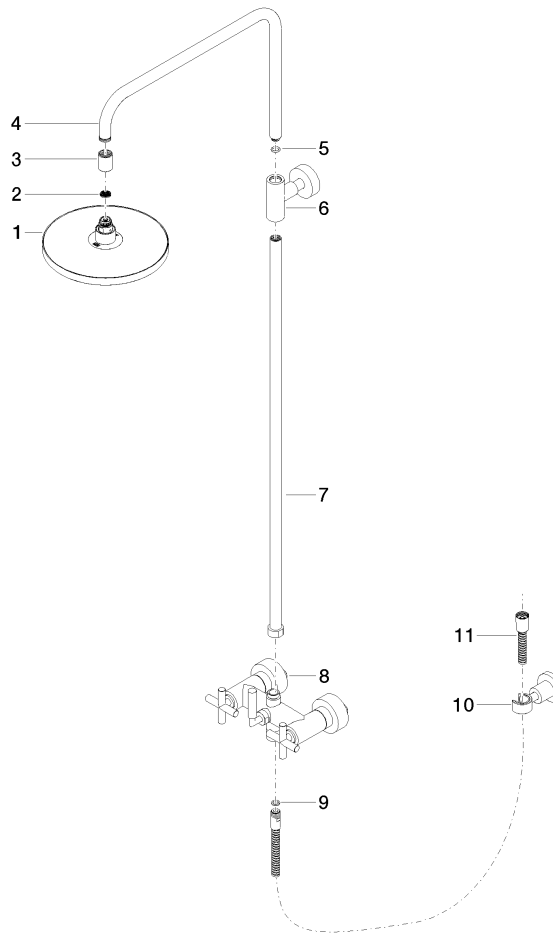
TARA Showerpipe 220 mm - Brushed Dark Platinum

TARA

ST 050 303 4892

Product version from 4/1/2024

Parts for other
finishes can be found
here: [Chrome](#)





TARA Showerpipe 220 mm - Brushed Dark Platinum

TARA

ST 050 303 4892

Spare parts list

Product version from 4/1/2024

No.	Item Number	Name	Quantity used	Delivery time
	90 12 05 092 20-99	shower	11	30

TARA Showerpipe 220 mm - Brushed Dark Platinum

TARA

ST 050 303 4892



- Three or five settings: COMPACT RAIN, COMPACT SOFT FLOW, COMPACT AQUAPRESSURE FLOW, max. flow rate 15 l/min (at 3 bar)
- with anti-scale system
- spray head Ø 100mm
- 1/2" connection
- WRAS 2210003
- Function from: 7 l/min

Intrinsic protection against back flow.

Fits: IMO, LULU, MADISON, MEM, TARA, CL.1, LISSÉ, VAIA, META, CYO

	Brushed Dark Platinum	28 018 979-9
	Chrome	28 018 979-0
	Chrome	28 018 979-00 001
	Brushed Platinum	28 018 979-0
	Brushed Platinum	28 018 979-06 001
	Platinum	28 018 979-0
	Platinum	28 018 979-08 001
	Dark Chrome	28 018 979-1
	Dark Chrome	28 018 979-19 001
	Light Gold	28 018 979-26 001
	Light Gold	28 018 979-2
	Brushed Light Gold	28 018 979-27 001
	Brushed Light Gold	28 018 979-2
	Brushed Durabronze (23kt Gold)	28 018 979-2
	Brushed Durabronze (23kt Gold)	28 018 979-28 001
	Matte Black	28 018 979-3
	Matte Black	28 018 979-33 001
	Brushed Bronze	28 018 979-42 001
	Brushed Bronze	28 018 979-4
	Brushed Champagne (22kt Gold)	28 018 979-4
	Brushed Champagne (22kt Gold)	28 018 979-46 001
	Champagne (22kt Gold)	28 018 979-4
	Champagne (22kt Gold)	28 018 979-47 001
	Brushed Chrome	28 018 979-9
	Brushed Chrome	28 018 979-93 001
	Brushed Dark Platinum	28 018 979-99 001



TARA Showerpipe 220 mm - Brushed Dark Platinum

TARA

ST 050 303 4892

9
—
0
—
0
—
6
—
0
—
8
—
0
—
9
—
0
—
0
—
6
—
0
—
7
—
8
—
0
—
3
—
0
—
0
—
2
—
6
—
0
—
7
—
0
—
3
—
0
—
0
—



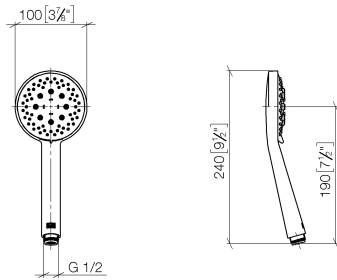
TARA Showerpipe 220 mm - Brushed Dark Platinum

TARA

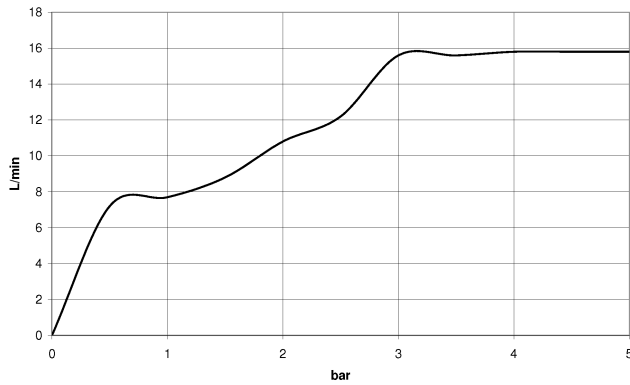
ST 050 303 4892

ST 050 303 4892

mm [inches]



Flow rate chart



Certificates

WRAS_2210

DVGW_DW-
6517DN0

LGA_29



TARA Showerpipe 220 mm - Brushed Dark Platinum

TARA

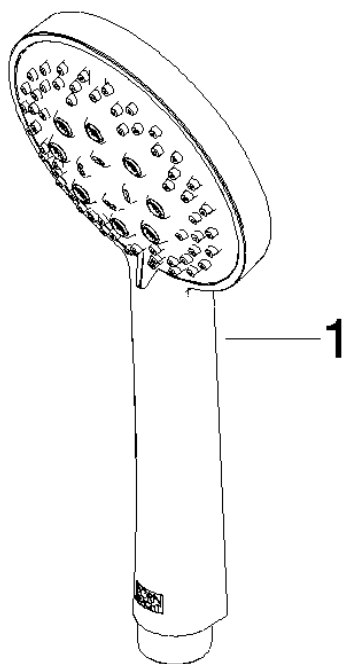
ST 050 303 4892

Codes & Standards

DIN 4109	EN 1112	ISO 3822	Scottish Water Byelaws
UK Water Supply Regulations	Ü-Zeichen		

Product version from 4/1/2024

Parts for other
finishes can be found
here: [Chrome](#)





TARA Showerpipe 220 mm - Brushed Dark Platinum

TARA

ST 050 303 4892

Spare parts list

Product version from 4/1/2024

No.	Item Number	Name	Quantity used	Delivery time
	09 23 01 039 90	sieve	1	2