

13 800 809



- 190mm projection
- fixed spout
- circular, air-enriched flow
- hole diameter 37 mm
- rosette Ø 60 mm
- 1/2" connection
- plug-link mounting
- max. flow 5.7 l/min
- lead-free
- WRAS 1801016
- This product can help a building meet the requirements of Green Building Rating Systems, e.g. LEED®, BREEAM®, DGNB

For Touchfree control please order eSet Touchfree WITH or WITHOUT temperature adjustment

|   |                                |               |
|---|--------------------------------|---------------|
|  | Chrome                         | 13 800 809-00 |
|  | Brushed Platinum               | 13 800 809-06 |
|  | Platinum                       | 13 800 809-08 |
|  | Dark Chrome                    | 13 800 809-19 |
|  | Brushed Durabronze (23kt Gold) | 13 800 809-28 |
|  | Brushed Bronze                 | 13 800 809-42 |
|  | Brushed Champagne (22kt Gold)  | 13 800 809-46 |
|  | Champagne (22kt Gold)          | 13 800 809-47 |
|  | Brushed Dark Platinum          | 13 800 809-99 |

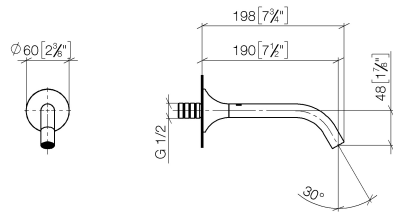
Recommended miscellaneous



- Concealed wall elbow -** 35 085 970 90
- max. recess depth 163 mm
  - min. recess depth 90 mm

13 800 809

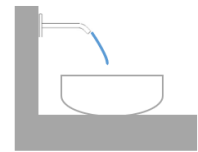
mm [inches]



Flow rate chart



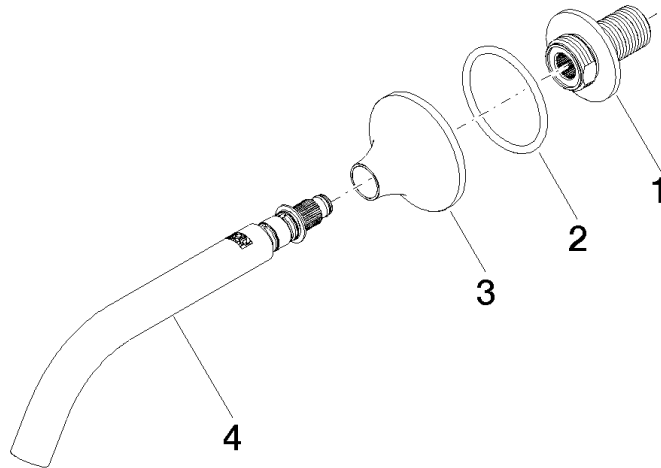
Trajectory diagram



Certificates

WRAS\_2306002. LGA\_29290.

13 800 809



### Spare parts list

| No. | Item Number        | Name    | Quantity used | Delivery time |
|-----|--------------------|---------|---------------|---------------|
| 1   | 09 24 03 269 90    | nipple  | 1             | 2             |
| 2   | 09 14 10 084 90    | seal    | 1             | 2             |
| 3   | 09 27 80 011-00    | rosette | 1             | 10            |
| 4   | 90 28 22 310 00-00 | spout   | 1             | 10            |