

TARA Bath spout for wall mounting - Brushed Champagne (22kt Gold)

TARA

13 801 892 Product version from 4/1/2024



- 200mm projection
- circular normal flow
- rosette Ø 55 mm
- hole diameter 37 mm
- 1/2" connection
- max. flow 29 l/min at 3 bar flow pressure
- WRAS

| | | |
|---|-------------------------------|---------------|
|  | Brushed Champagne (22kt Gold) | 13 801 892-46 |
|  | Chrome | 13 801 892-00 |
|  | Brushed Platinum | 13 801 892-06 |
|  | Platinum | 13 801 892-08 |
|  | Dark Chrome | 13 801 892-19 |
|  | Brushed Light Gold | 13 801 892-27 |
|  | Brushed Durabrass (23kt Gold) | 13 801 892-28 |
|  | Matte Black | 13 801 892-33 |
|  | Brushed Bronze | 13 801 892-42 |
|  | Champagne (22kt Gold) | 13 801 892-47 |
|  | Brushed Chrome | 13 801 892-93 |
|  | Brushed Dark Platinum | 13 801 892-99 |

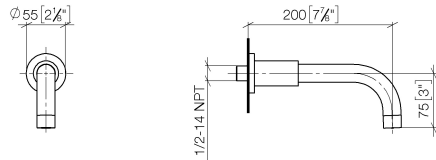
Recommended miscellaneous



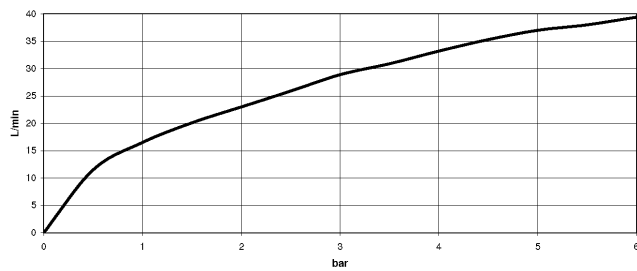
- Concealed wall elbow -**
- max. recess depth 163 mm
 - min. recess depth 90 mm

35 085 970 90

mm [inches]



Flow rate chart



Codes & Standards

| | | | |
|----------------|------|----------|----------|
| ASME A112.18.1 | cUPC | DIN 4109 | ISO 3822 |
|----------------|------|----------|----------|

| | | |
|---------------------------|--------------------------------|-----------|
| Scottish Water Byelaws | UK Water Supply Regulations | Ü-Zeichen |
|---------------------------|--------------------------------|-----------|



TARA Bath spout for wall mounting - Brushed Champagne (22kt Gold)

TARA

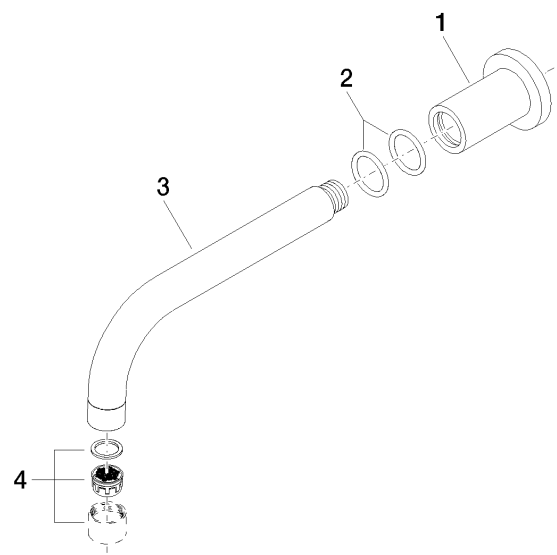
13 801 892 Product version from 4/1/2024

Certificates and sustainability

LGA_18

IAPMO_4976

WRAS_240602



Spare parts list

| No. | Item Number | Name | Quantity used | Delivery time |
|-----|--------------------|---------|---------------|---------------|
| 4 | 90 23 01 024 00-46 | aerator | 1.00 | 30 |
| 1 | 09 27 89 009-46 | rosette | 1.00 | 30 |
| 3 | 04 28 22 198 20-46 | spout | 1.00 | 30 |
| 2 | 90 14 10 025 00 90 | seal | 2.00 | 2 |