

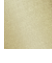





**MADISON Three-hole basin mixer with pop-up waste - Brushed Durabronz
(23kt Gold)**

MADISON

20 700 370



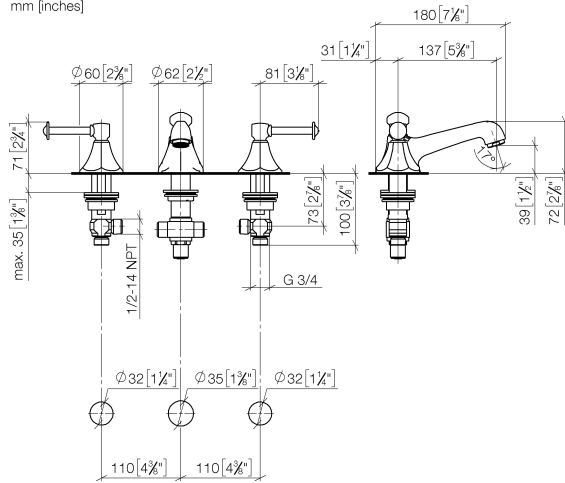
- 135mm projection
 - fixed spout
 - circular, air-enriched flow
 - height of mixer 72 mm
 - height up to aerator 40 mm
 - hole diameter valve 32 mm
 - hole diameter spout 35 mm
 - without rosette
 - 2x 1/2" x 1/2" high pressure hose
 - max. flow 7 l/min
 - lead-free
 - This product can help a building meet the requirements of Green Building Rating Systems, e.g. LEED®, BREEAM®, DGNB
- Only suitable for basins with an overflow.

| | | |
|---|-------------------------------|---------------|
|  | Brushed Durabronz (23kt Gold) | 20 700 370-28 |
|  | Chrome | 20 700 370-00 |
|  | Brushed Platinum | 20 700 370-06 |
|  | Platinum | 20 700 370-08 |
|  | Durabronz (23kt Gold) | 20 700 370-09 |
|  | Brushed Dark Platinum | 20 700 370-99 |

MADISON Three-hole basin mixer with pop-up waste - Brushed Durabross (23kt Gold)

MADISON

20 700 370
mm [inches]



Flow rate chart

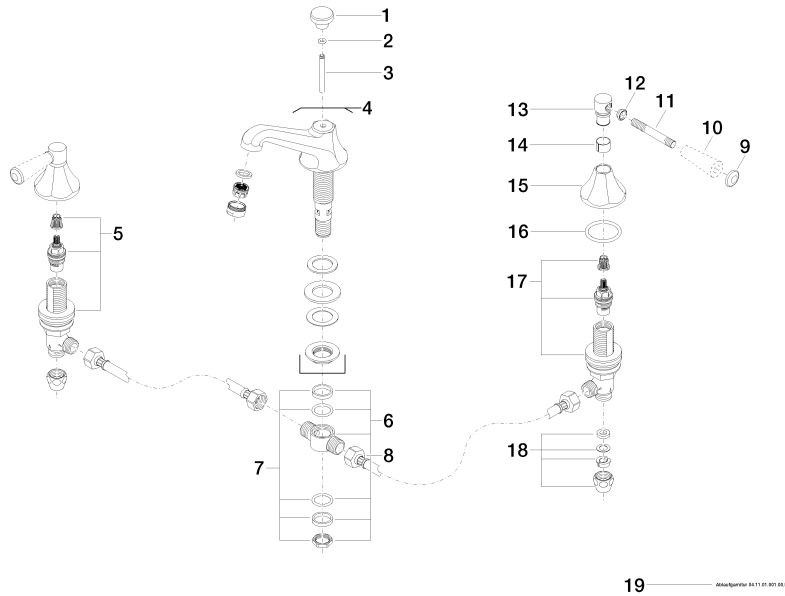


Certificates

GDV_0400288. LGA_8027.

20 700 370

Parts for other finishes can be found here: [Chrome](#)



Spare parts list

| No. | Item Number | Name | Quantity used | Delivery time |
|--|--------------------|--|---------------|---------------|
| 1 | 09 20 36 030-28 | handle | 1 | 20 |
| 2 | 90 14 10 062 00 90 | seal | 1 | 2 |
| 3 | 09 31 09 004-28 | pull-rod | 1 | 20 |
| 4 | 13 700 380-28 | spout | 1 | - |
| Spare part can no longer be ordered, please order the replacement item | | | | |
| 5 | 90 17 11 040 51 90 | side panel | 1 | 2 |
| 6 | 90 17 11 020 10 90 | distributor | 1 | 2 |
| 7 | 90 23 10 012 00 90 | gasket kit | 1 | 2 |
| 8 | 04 30 04 096 00 90 | hose | 2 | 2 |
| 9 | 09 30 30 062-28 | screw | 2 | 20 |
| 10 | 11 170 370-28 | MADISON Lever insert - Brushed Durabross (23kt Gold) | 2 | 20 |
| 11 | 09 28 22 013 90 | pipe | 2 | 2 |
| 12 | 09 20 37 001-28 | handle | 2 | 20 |
| 13 | 09 20 82 000-28 | handle | 2 | 20 |
| 14 | 90 18 40 041 00 90 | sleeve | 2 | 2 |
| 15 | 09 27 37 014-28 | rosette | 2 | 20 |
| 16 | 90 14 10 043 00 90 | seal | 2 | 2 |
| 17 | 90 17 11 040 50 90 | side panel | 1 | 2 |
| 18 | 90 23 30 040 00-28 | threaded connector | 2 | 20 |
| 19 | 90 11 01 001 00-28 | pop-up waste | 1 | 20 |