

## VAIA Single-hole basin mixer with pop-up waste - Brushed Bronze

VAIA

22 513 809 Product version from 4/1/2025



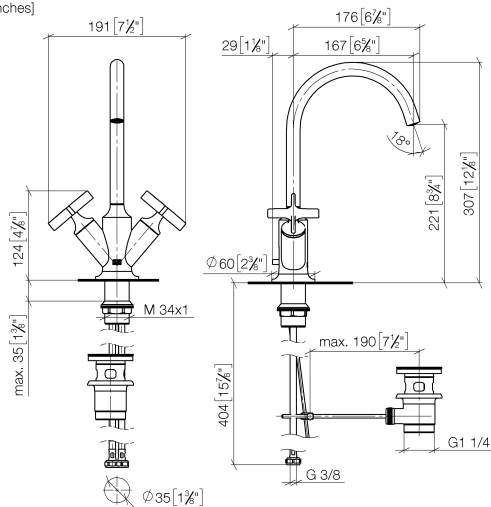
- 167mm projection
- pivotable spout 360°
- circular, air-enriched flow
- height of mixer 307 mm
- height up to aerator 221 mm
- hole diameter 35 mm
- rosette Ø 60 mm
- 2x screw-in M 10 x 1 pressure hose, leak-tested
- max. flow 5.7 l/min
- lead-free
- This product can help a building meet the requirements of Green Building Rating Systems, e.g. LEED®, BREEAM®, DGNB
- WRAS

Only suitable for basins with an overflow.

	Brushed Bronze	22 513 809-42
	Chrome	22 513 809-00
	Brushed Platinum	22 513 809-06
	Platinum	22 513 809-08
	Dark Chrome	22 513 809-19
	Brushed Durabronze (23kt Gold)	22 513 809-28
	Brushed Dark Brass	22 513 809-39
	Brushed Champagne (22kt Gold)	22 513 809-46
	Champagne (22kt Gold)	22 513 809-47
	Brushed Dark Platinum	22 513 809-99

22 513 809 Product version from 4/1/2025

mm [inches]



## Flow rate chart



## Codes & Standards

DIN 4109

ISO 3822

Scottish Water  
Byelaws

UK Water Supply  
Regulations

## Ü-Zeichen



## VAIA Single-hole basin mixer with pop-up waste - Brushed Bronze

---

VAIA

22 513 809 Product version from 4/1/2025

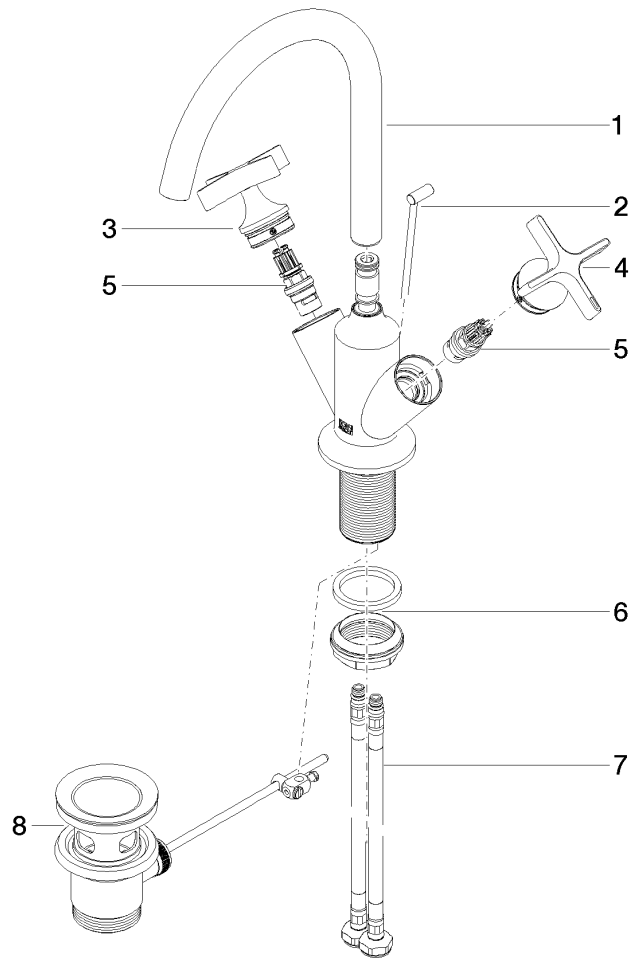
### Certificates and sustainability

---

LGA\_18

WRAS\_240102

Parts for other  
finishes can be found  
here: [Chrome](#)



## Spare parts list

No.	Item Number	Name	Quantity used	Delivery time
6	04 23 10 044 07 90	fixing set	1.00	2
2	04 20 89 035 80-42	pull-rod	1.00	60
1	90 28 22 320 00-42	spout	1.00	30
3	90 20 66 029 01-42	handle ( hot )	1.00	30
8	90 11 01 001 00-42	pop-up waste	1.00	30
7	04 30 04 100 00 90	hose	2.00	2
4	90 20 66 028 00-42	handle ( cold )	1.00	30
5	90 90 03 175 00 90	top	2.00	2