

28 002 970



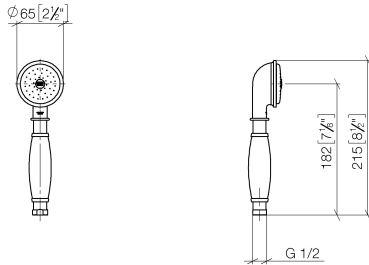
- COMPACT RAIN, max. flow rate 9 l/min (at 3 bar)
- Function from: 6 l/min
- spray head Ø 64mm
- 1/2" connection
- WRAS 240502026, 1809019

Intrinsic protection against back flow.

| | | |
|--|------------------------------|--------------------|
|  | Chrome | 28 002 970-00 |
|  | Chrome | 28 002 970-00 0010 |
|  | Gold (23.9kt) | 28 002 970-01 |
|  | Brushed Platinum | 28 002 970-06 |
|  | Brushed Platinum | 28 002 970-06 0010 |
|  | Platinum | 28 002 970-08 |
|  | Platinum | 28 002 970-08 0010 |
|  | Durabass (23kt Gold) | 28 002 970-09 |
|  | Durabass (23kt Gold) | 28 002 970-09 0010 |
|  | Brushed Durabass (23kt Gold) | 28 002 970-28 |
|  | Brushed Durabass (23kt Gold) | 28 002 970-28 0010 |
|  | Brushed Chrome | 28 002 970-93 |
|  | Brushed Chrome | 28 002 970-93 0010 |
|  | Brushed Dark Platinum | 28 002 970-99 |
|  | Brushed Dark Platinum | 28 002 970-99 0010 |

28 002 970

mm [inches]



Flow rate chart



Codes & Standards

DIN 4109

ISO 3822

Scottish Water
Byelaws

UK Water Supply
Regulations

Ü-Zeichen



MADISON Metal hand shower with porcelain insert (white) - Chrome

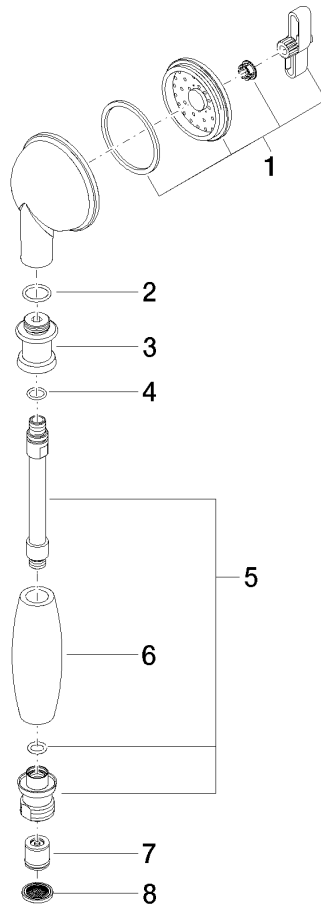
MADISON

28 002 970

Certificates

LGA_8

WRAS_240502





MADISON Metal hand shower with porcelain insert (white) - Chrome

MADISON

28 002 970

Spare parts list

| No. | Item Number | Name | Quantity used | Delivery time |
|-----|--------------------|------|---------------|---------------|
| | 90 12 01 010 00 90 | set | 8 | 2 |