









28 450 845



- 3/8" shower outlet
- rosette 60 x 78 mm
- 1/2" connection
- WRAS 2310091

Intrinsic protection against back flow.

	Chrome	28 450 845-00
	Brushed Platinum	28 450 845-06
	Dark Chrome	28 450 845-19
	Light Gold	28 450 845-26
	Brushed Light Gold	28 450 845-27
	Matte Black	28 450 845-33
	Brushed Chrome	28 450 845-93
	Brushed Dark Platinum	28 450 845-99

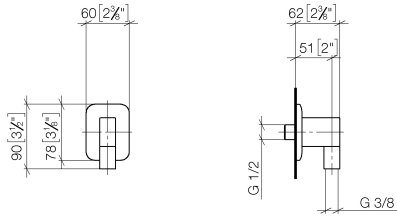
Recommended miscellaneous



- Concealed wall elbow -** 35 085 970 90
- max. recess depth 163 mm
 - min. recess depth 90 mm

28 450 845

mm [inches]



Flow rate chart



Codes & Standards

ASME A112.18.1

cUPC

Scottish Water
Byelaws

UK Water Supply
Regulations



LISSÉ Wall elbow - Chrome

LISSÉ

28 450 845

Certificates

IAPMO_4976

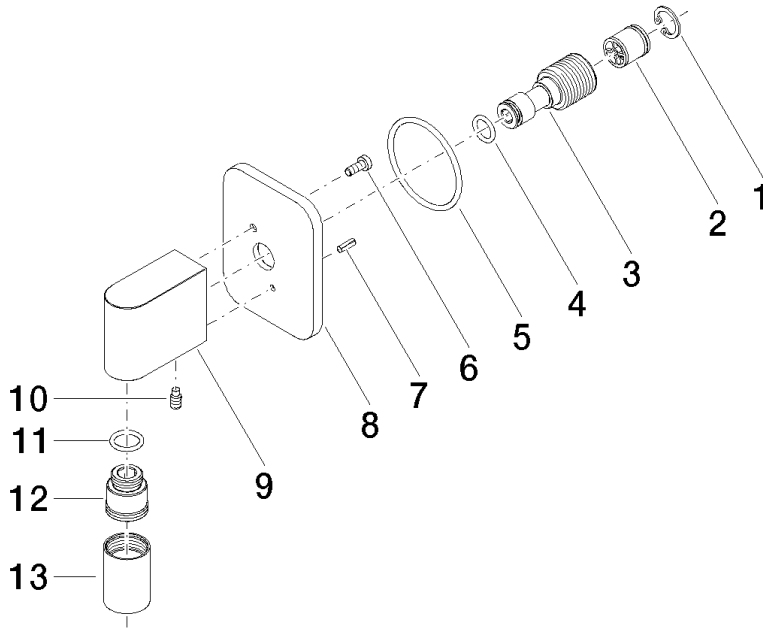
WRAS_2310

28 450 845

Product version from 3/9/2016 to 7/6/2018

Product version from 7/6/2018 to 3/2/2021

Product version from 3/2/2021





LISSÉ Wall elbow - Chrome

LISSÉ

28 450 845

Spare parts list

Product version from 3/9/2016 to 7/6/2018

Product version from 7/6/2018 to 3/2/2021

Product version from 3/2/2021

No.	Item Number	Name	Quantity used	Delivery time
	09 16 01 014 90	ring	13	2