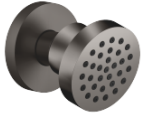


**Body spray without volume control FlowReduce - Brushed Dark Platinum**

TARA

28 518 979



- spray head Ø 55mm
- ball-joint pivotable through 25° (in any direction)
- HORIZONTAL RAIN, max. flow rate 5 l/min (at 3 bar)
- with anti-scale system
- rosette Ø 55 mm
- 1/2" connection
- This product can help a building meet the requirements of Green Building Rating Systems, e.g. LEED®, BREEAM®, DGNB

Fits: TARA, LISSÉ, VAIA, META

|  |                                |               |
|--|--------------------------------|---------------|
|    | Brushed Dark Platinum          | 28 518 979-99 |
|    | Chrome                         | 28 518 979-00 |
|    | Brushed Platinum               | 28 518 979-06 |
|    | Platinum                       | 28 518 979-08 |
|    | Durabronze (23kt Gold)         | 28 518 979-09 |
|    | Dark Chrome                    | 28 518 979-19 |
|    | Light Gold                     | 28 518 979-26 |
|    | Brushed Light Gold             | 28 518 979-27 |
|   | Brushed Durabronze (23kt Gold) | 28 518 979-28 |
|  | Matte Black                    | 28 518 979-33 |
|  | Brushed Bronze                 | 28 518 979-42 |
|  | Brushed Champagne (22kt Gold)  | 28 518 979-46 |
|  | Champagne (22kt Gold)          | 28 518 979-47 |
|  | Brushed Chrome                 | 28 518 979-93 |

**Recommended miscellaneous**



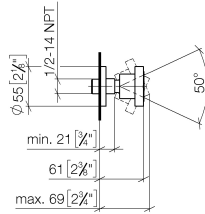
**Concealed wall elbow -**

35 085 970 90

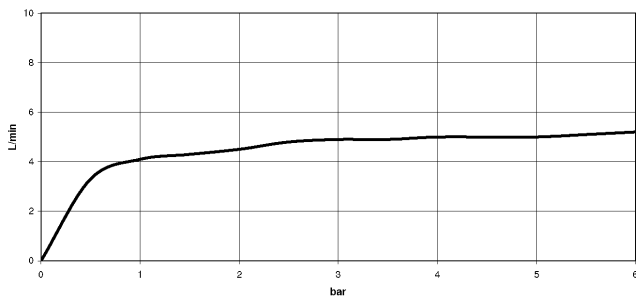
- max. recess depth 163 mm
- min. recess depth 90 mm

28 518 979

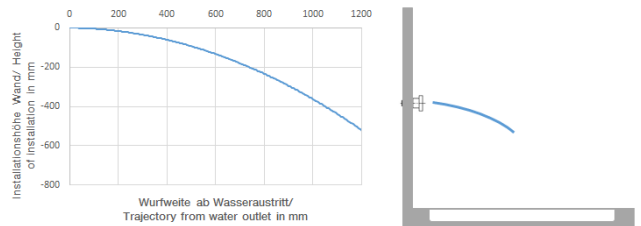
mm [inches]



Flow rate chart



Trajectory diagram



Codes & Standards

ASME A112.18.1

cUPC

DIN 4109

ISO 3822

Scottish Water  
Byelaws

UK Water Supply  
Regulations

Ü-Zeichen



Body spray without volume control FlowReduce - Brushed Dark Platinum

TARA

28 518 979

Certificates

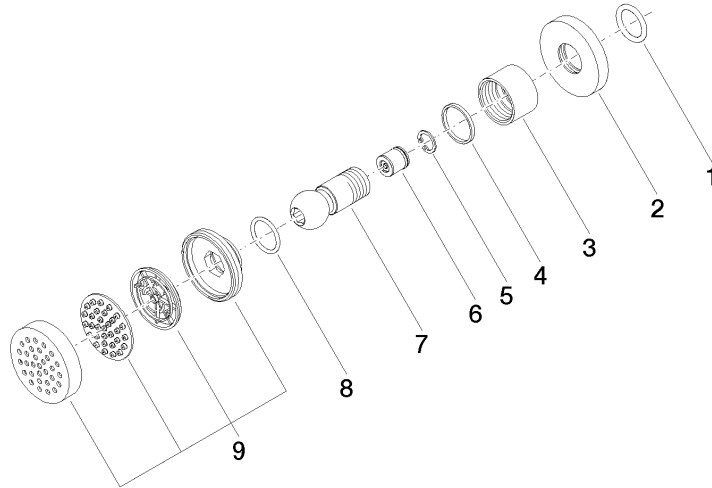
IAPMO\_4976

LGA\_38

WRAS\_240602

28 518 979

Product version from 4/1/2024





Body spray without volume control FlowReduce - Brushed Dark Platinum

TARA

28 518 979

**Spare parts list**

**Product version from 4/1/2024**

| No. | Item Number        | Name | Quantity used | Delivery time |
|-----|--------------------|------|---------------|---------------|
|     | 90 14 10 026 00 90 | seal | 9             | 2             |