

## Rain shower with wall fixing FlowReduce 220 mm - Brushed Platinum

SERIES SPECIFIC

28 648 670 Product version from 4/1/2024

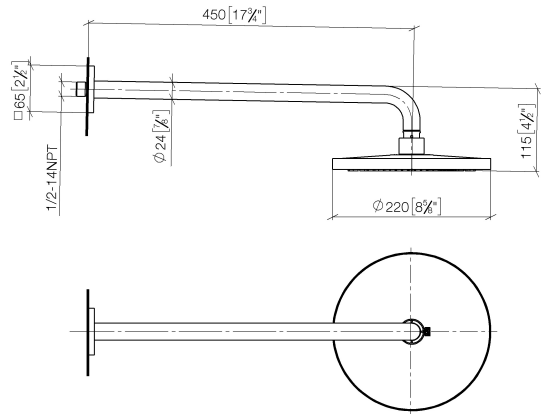


- 450mm projection
- rain shower Ø 220 mm
- rain flow
- max. flow 7 l/min
- Function from: 6 l/min
- rosette 65 x 65 mm
- 1/2" connection
- with anti-scale system
- quick clearing
- This product can help a building meet the requirements of Green Building Rating Systems, e.g. LEED®, BREEAM®, DGNB

|   |                               |               |
|---|-------------------------------|---------------|
|    | Brushed Platinum              | 28 648 670-06 |
|    | Chrome                        | 28 648 670-00 |
|    | Platinum                      | 28 648 670-08 |
|    | Dark Chrome                   | 28 648 670-19 |
|    | Brushed Light Gold            | 28 648 670-27 |
|    | Brushed Durabrass (23kt Gold) | 28 648 670-28 |
|    | Matte Black                   | 28 648 670-33 |
|    | Brushed Champagne (22kt Gold) | 28 648 670-46 |
|    | Champagne (22kt Gold)         | 28 648 670-47 |
|   | Brushed Chrome                | 28 648 670-93 |
|  | Brushed Dark Platinum         | 28 648 670-99 |

28 648 670 Product version from 4/1/2024

mm [inches]



**Flow rate chart**



**Codes & Standards**

DIN 4109

ISO 3822

Ü-Zeichen



## Rain shower with wall fixing FlowReduce 220 mm - Brushed Platinum

SERIES SPECIFIC

28 648 670 Product version from 4/1/2024

Certificates and sustainability

LGA\_38

28 648 670 Product version from 4/1/2024

Parts for other  
finishes can be found  
here: [Chrome](#)



## Spare parts list

| No. | Item Number        | Name       | Quantity used | Delivery time |
|-----|--------------------|------------|---------------|---------------|
| 6   | 90 11 03 070 00-06 | pipe       | 1.00          | 10            |
| 1   | 04 30 31 032 00 90 | fixing set | 1.00          | 2             |
| 8   | 90 12 05 092 20-06 | shower     | 1.00          | 10            |
| 9   | 90 30 09 069 00 90 | key        | 1.00          | 2             |
| 7   | 09 23 01 075 90    | insert     | 1.00          | 2             |
| 2   | 09 17 20 120 90    | holder     | 1.00          | 2             |
| 3   | 09 14 10 150 90    | seal       | 1.00          | 2             |
| 5   | 90 31 11 038 00 90 | pin        | 1.00          | 2             |
| 4   | 09 27 67 015-06    | rosette    | 1.00          | 10            |