

Rain shower with wall fixing FlowReduce 220 mm - Champagne (22kt Gold)

SERIES SPECIFIC

28 648 670 Product version from 4/1/2024



- 450mm projection
- rain shower Ø 220 mm
- rain flow
- max. flow 7 l/min
- Function from: 6 l/min
- rosette 65 x 65 mm
- 1/2" connection
- with anti-scale system
- quick clearing
- This product can help a building meet the requirements of Green Building Rating Systems, e.g. LEED®, BREEAM®, DGNB

| | | |
|---|--------------------------------|---------------|
|  | Champagne (22kt Gold) | 28 648 670-47 |
|  | Chrome | 28 648 670-00 |
|  | Brushed Platinum | 28 648 670-06 |
|  | Platinum | 28 648 670-08 |
|  | Dark Chrome | 28 648 670-19 |
|  | Brushed Light Gold | 28 648 670-27 |
|  | Brushed Durabronze (23kt Gold) | 28 648 670-28 |
|  | Matte Black | 28 648 670-33 |
|  | Brushed Champagne (22kt Gold) | 28 648 670-46 |
|  | Brushed Chrome | 28 648 670-93 |
|  | Brushed Dark Platinum | 28 648 670-99 |

Rain shower with wall fixing FlowReduce 220 mm - Champagne (22kt Gold) SERIES SPECIFIC

28 648 670 Product version from 4/1/2024

mm [inches]



Flow rate chart



Codes & Standards

DIN 4109 ISO 3822 Ü-Zeichen



Rain shower with wall fixing FlowReduce 220 mm - Champagne (22kt Gold)

SERIES SPECIFIC

28 648 670 Product version from 4/1/2024

Certificates and sustainability

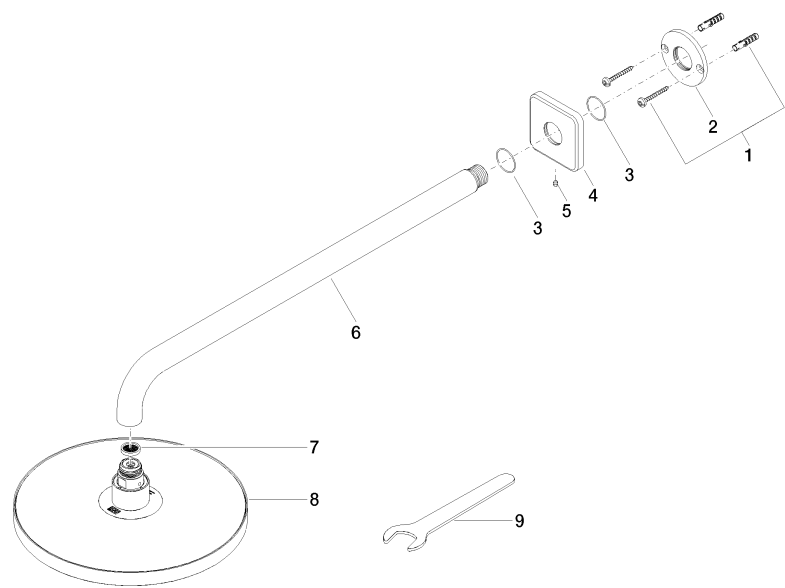
LGA_38

Rain shower with wall fixing FlowReduce 220 mm - Champagne (22kt Gold)

SERIES SPECIFIC

28 648 670 Product version from 4/1/2024

Parts for other
 finishes can be found
 here: [Chrome](#)



Spare parts list

| No. | Item Number | Name | Quantity used | Delivery time |
|-----|----------------------|------------|---------------|---------------|
| | 5 90 31 11 038 00 90 | pin | 1.00 | 2 |
| | 4 09 27 67 015-47 | rosette | 1.00 | 30 |
| | 8 90 12 05 092 20-47 | shower | 1.00 | 30 |
| | 1 04 30 31 032 00 90 | fixing set | 1.00 | 2 |
| | 6 90 11 03 070 00-47 | pipe | 1.00 | 30 |
| | 7 09 23 01 075 90 | insert | 1.00 | 2 |
| | 9 90 30 09 069 00 90 | key | 1.00 | 2 |
| | 3 09 14 10 150 90 | seal | 1.00 | 2 |
| | 2 09 17 20 120 90 | holder | 1.00 | 2 |