

Rain shower with wall fixing 300 mm - Brushed Dark Platinum



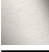




IMO

28 679 670



- 450mm projection
- rain shower Ø 300 mm
- PURE RAIN, max. flow rate 14 l/min (at 3 bar)
- Function from: 10 l/min
- rosette 65 x 65 mm
- 1/2" connection
- with anti-scale system
- quick clearing
- WRAS 2212012

Fits: IMO, CYO

| | | |
|--|--------------------------------|---------------|
|  | Brushed Dark Platinum | 28 679 670-99 |
|  | Chrome | 28 679 670-00 |
|  | Brushed Platinum | 28 679 670-06 |
|  | Platinum | 28 679 670-08 |
|  | Brushed Durabronze (23kt Gold) | 28 679 670-28 |
|  | Matte Black | 28 679 670-33 |
|  | Brushed Chrome | 28 679 670-93 |

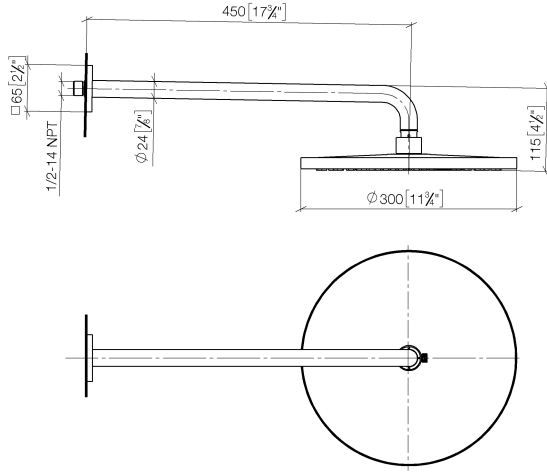
Recommended miscellaneous



- Concealed wall elbow -** 35 085 970 90
- max. recess depth 163 mm
 - min. recess depth 90 mm

28 679 670

mm [inches]



Flow rate chart



Codes & Standards

DIN 4109

ISO 3822

Scottish Water
Byelaws

UK Water Supply
Regulations

Ü-Zeichen



Rain shower with wall fixing 300 mm - Brushed Dark Platinum

IMO

28 679 670

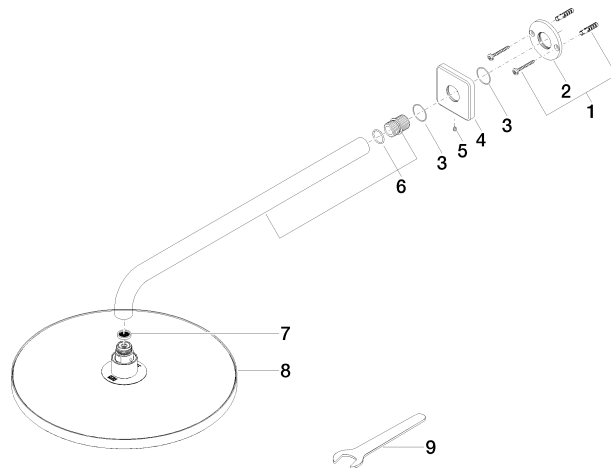
Certificates

LGA_29

WRAS_2212

28 679 670

Product version from 3/13/2017





Rain shower with wall fixing 300 mm - Brushed Dark Platinum

IMO

28 679 670

Spare parts list

Product version from 3/13/2017

| No. | Item Number | Name | Quantity used | Delivery time |
|-----|--------------------|------------|---------------|---------------|
| | 04 30 31 032 00 90 | fixing set | 10 | 2 |