

VAIA Wall-mounted valve cold water without pop-up waste - Brushed Platinum

VAIA

30 010 809 Product version from 4/1/2025



- 151mm projection
- fixed spout
- adapter with male thread 3/4"
- hole diameter 35 mm
- rosette Ø 60 mm
- max. flow 5.7 l/min
- lead-free
- This product can help a building meet the requirements of Green Building Rating Systems, e.g. LEED®, BREEAM®, DGNB
- WRAS

	Brushed Platinum	30 010 809-06
	Chrome	30 010 809-00
	Platinum	30 010 809-08
	Dark Chrome	30 010 809-19
	Brushed Durabronze (23kt Gold)	30 010 809-28
	Brushed Dark Brass	30 010 809-39
	Brushed Bronze	30 010 809-42
	Brushed Champagne (22kt Gold)	30 010 809-46
	Champagne (22kt Gold)	30 010 809-47
	Brushed Dark Platinum	30 010 809-99

Recommended miscellaneous



Concealed wall elbow -

35 085 970 90

- min. recess depth 90 mm
- max. recess depth 163 mm

mm [inches]



Flow rate chart



Codes & Standards

DIN 4109

ISO 3822

Scottish Water
Byelaws

UK Water Supply
Regulations

Ü-Zeichen



VAIA Wall-mounted valve cold water without pop-up waste - Brushed Platinum

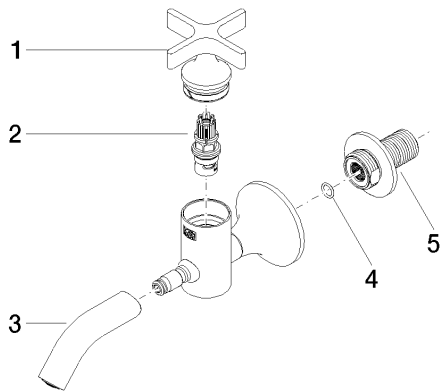
VAIA

30 010 809 Product version from 4/1/2025

Certificates and sustainability

LGA_18

WRAS_240102



Spare parts list

No.	Item Number	Name	Quantity used	Delivery time
1	90 20 66 025 00-06	handle	1.00	10
2	90 90 03 175 00 90	top	1.00	2
5	09 24 03 269 90	nipple	1.00	2
3	90 28 22 381 00-06	spout	1.00	10
4	90 14 10 060 00 90	seal	1.00	2