

LISSÉ Single-lever shower mixer for wall mounting - Brushed Chrome

LISSÉ



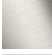




33 300 845

Product version from 3/9/2016 to 7/17/2018



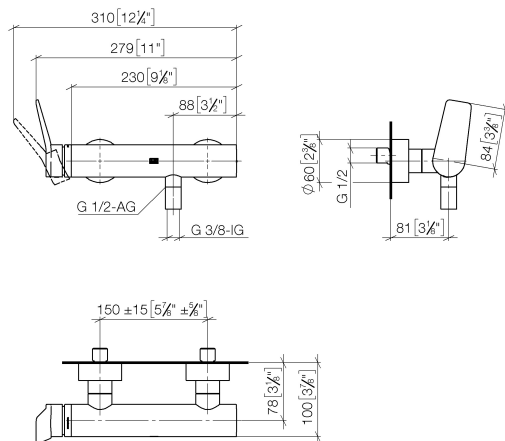
- 3/8" shower outlet
  - slide-on rosettes Ø 60 mm
  - 1/2" connection
  - gauge 150 mm - 15 mm
  - WRAS

Intrinsic protection against back flow.

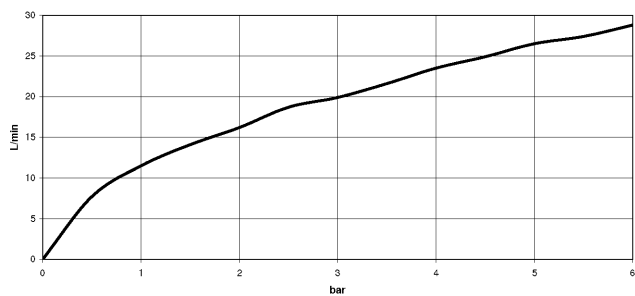
	Brushed Chrome	33 300 845-93
	Chrome	33 300 845-00
	Brushed Platinum	33 300 845-06
	Dark Chrome	33 300 845-19
	Brushed Light Gold	33 300 845-27
	Matte Black	33 300 845-33
	Brushed Dark Platinum	33 300 845-99

33 300 845 Product version from 3/9/2016 to 7/17/2018

mm [inches]



**Flow rate chart**



**Codes & Standards**

ASME A112.18.1	cUPC	DIN 4109	EN 1717
ISO 3822	Scottish Water Byelaws	UK Water Supply Regulations	Ü-Zeichen



LISSE Single-lever shower mixer for wall mounting - Brushed Chrome

LISSE

33 300 845 Product version from 3/9/2016 to 7/17/2018

Certificates and sustainability

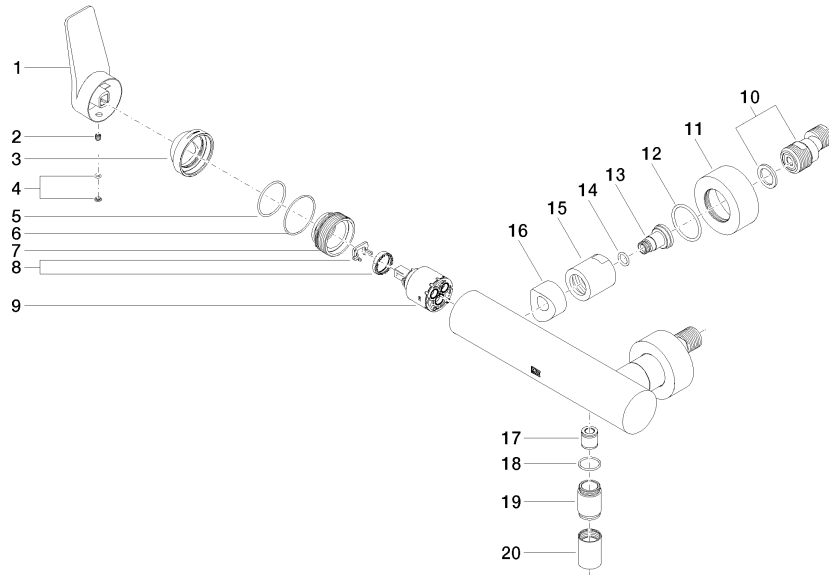
Belgaqua\_21-025-2 LGA\_9 WRAS\_2207 IAPMO\_4976 (

# LISSE Single-lever shower mixer for wall mounting - Brushed Chrome

LISSE

33 300 845 Product version from 3/9/2016 to 7/17/2018

Parts for other finishes can be found here: [Chrome](#)



## Spare parts list

No.	Item Number	Name	Quantity used	Delivery time
	14 09 14 10 008 90	seal	2.00	2
	7 09 24 04 296 90	nut	1.00	2
	19 09 24 03 115 20-93	nipple	1.00	20
	5 09 14 10 102 90	seal	1.00	2
	3 09 28 30 032-93	cover	1.00	20
	9 90 15 05 064 00 90	cartridge	1.00	2
	16 09 18 40 059-93	sleeve	2.00	20
	10 04 11 04 030 00 90	connection	2.00	2
	11 09 27 62 004-93	rosette	2.00	20
	12 09 14 10 119 90	seal	2.00	2
	4 90 31 20 087 00-93	plug	1.00	20
	15 09 23 10 048-93	nut	2.00	20
	6 09 14 10 190 90	seal	1.00	2
	17 90 23 01 040 00 90	back-flow preventer	1.00	2
	1 09 20 84 021-93	handle	1.00	20
	13 09 29 05 005 20 90	nipple	2.00	60
	8 90 28 10 148 00 90	accessories	1.00	2
	2 90 31 11 030 00 90	pin	1.00	2
	18 90 14 10 032 00 90	seal	1.00	2
	20 90 21 02 069 00-93	cover	1.00	20