

META Single-lever basin mixer with raised base without pop-up waste - Brushed Platinum

META

33 537 660 Product version up to 1/23/2020



- 135mm projection
- fixed spout
- circular, air-enriched flow
- height of mixer 300 mm
- height up to aerator 219 mm
- hole diameter 35 mm
- 2x screw-in M 8 x 1 pressure hose, leak-tested
- max. flow 5.7 l/min
- lead-free
- This product can help a building meet the requirements of Green Building Rating Systems, e.g. LEED®, BREEAM®, DGNB
- WRAS

for use on countertop bowls

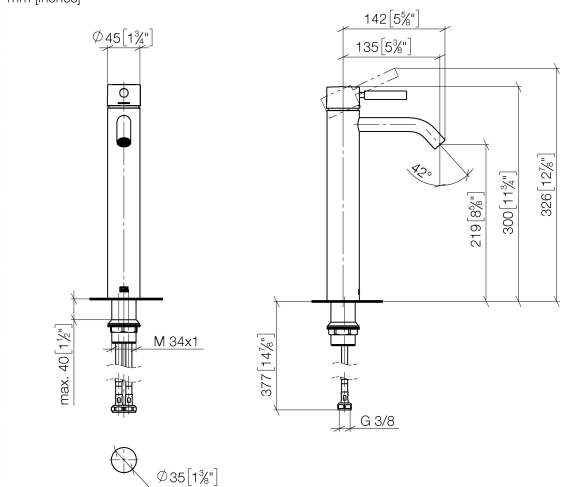
Product change as of 1.4.2023: height of mixer 300 mm, height up to aerator 219 mm

| | | |
|---|-------------------------------|---------------|
|  | Brushed Platinum | 33 537 660-06 |
|  | Chrome | 33 537 660-00 |
|  | Dark Chrome | 33 537 660-19 |
|  | Light Gold | 33 537 660-26 |
|  | Brushed Light Gold | 33 537 660-27 |
|  | Matte Black | 33 537 660-33 |
|  | Brushed Dark Brass | 33 537 660-39 |
|  | Brushed Bronze | 33 537 660-42 |
|  | Brushed Champagne (22kt Gold) | 33 537 660-46 |
|  | Champagne (22kt Gold) | 33 537 660-47 |
|  | Brushed Chrome | 33 537 660-93 |
|  | Brushed Dark Platinum | 33 537 660-99 |

META Single-lever basin mixer with raised base without pop-up waste - Brushed Platinum

META

33 537 660 Product version up to 1/23/2020
mm [inches]



Flow rate chart



Codes & Standards

DIN 4109

EN 817

ISO 3822

Scottish Water
Byelaws

UK Water Supply
Regulations

Ü-Zeichen



META Single-lever basin mixer with raised base without pop-up waste -
Brushed Platinum

META

33 537 660 Product version up to 1/23/2020

Certificates and sustainability

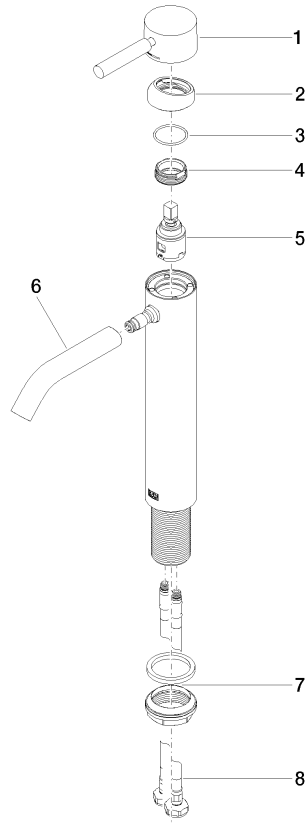
| | | |
|--------|---------------------|-----------|
| LGA_29 | DVGW_DW- 6506DN0 | WRAS_2003 |
|--------|---------------------|-----------|

META Single-lever basin mixer with raised base without pop-up waste - Brushed Platinum

META

33 537 660 Product version up to 1/23/2020

Parts for other
finishes can be found
here: [Chrome](#)



Spare parts list

| No. | Item Number | Name | Quantity used | Delivery time |
|-----|--------------------|------------|---------------|---------------|
| 3 | 09 14 10 091 90 | seal | 1.00 | 2 |
| 7 | 04 23 10 044 07 90 | fixing set | 1.00 | 2 |
| 8 | 04 30 04 101 00 90 | hose | 2.00 | 2 |
| 6 | 90 11 06 207 00-06 | spout | 1.00 | 10 |
| 4 | 09 24 04 266 90 | nut | 1.00 | 2 |
| 5 | 90 15 05 042 00 90 | cartridge | 1.00 | 2 |
| 1 | 90 20 66 002 00-06 | handle | 1.00 | 10 |
| 2 | 09 28 30 041-06 | cover | 1.00 | 10 |