

## META Single-lever bidet mixer with pop-up waste - Chrome

META

33 600 660 Product version up to 1/23/2020



- 125mm projection
- ball-joint pivotable through 15° (in any direction)
- circular, air-enriched flow
- height of mixer 133 mm
- height up to aerator 55 mm
- hole diameter 35 mm
- 2x screw-in M 8 x 1 pressure hose, leak-tested
- max. flow 5.7 l/min
- WRAS

|   |                               |               |
|---|-------------------------------|---------------|
|    | Chrome                        | 33 600 660-00 |
|    | Brushed Platinum              | 33 600 660-06 |
|    | Dark Chrome                   | 33 600 660-19 |
|    | Light Gold                    | 33 600 660-26 |
|    | Brushed Light Gold            | 33 600 660-27 |
|    | Matte Black                   | 33 600 660-33 |
|    | Brushed Bronze                | 33 600 660-42 |
|    | Brushed Champagne (22kt Gold) | 33 600 660-46 |
|    | Champagne (22kt Gold)         | 33 600 660-47 |
|    | Brushed Chrome                | 33 600 660-93 |
|  | Brushed Dark Platinum         | 33 600 660-99 |

## META Single-lever bidet mixer with pop-up waste - Chrome

META

33 600 660 Product version up to 1/23/2020

mm [inches]



### Flow rate chart



### Codes & Standards

|                |                        |                             |           |
|----------------|------------------------|-----------------------------|-----------|
| ASME A112.18.1 | cUPC                   | DIN 4109                    | EN 817    |
| ISO 3822       | Scottish Water Byelaws | UK Water Supply Regulations | Ü-Zeichen |



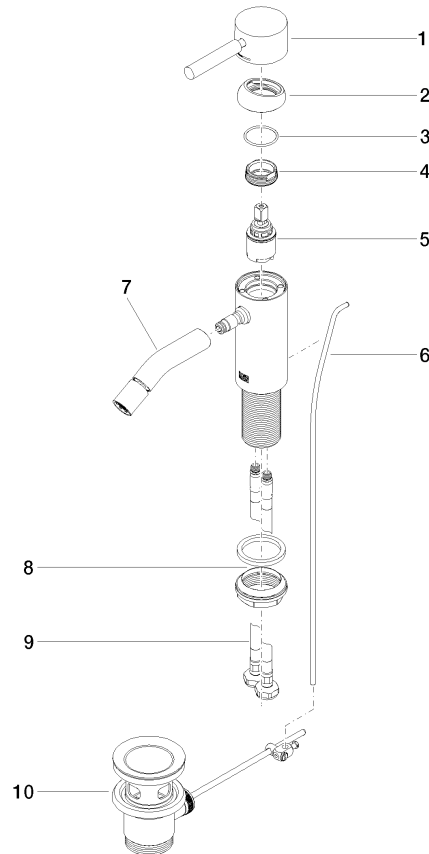
META Single-lever bidet mixer with pop-up waste - Chrome

META

33 600 660    Product version up to 1/23/2020

Certificates and sustainability

|           |                 |        |              |
|-----------|-----------------|--------|--------------|
| WRAS_2003 | DVGW_DW-6506DN0 | LGA_29 | IAPMO_4976 ( |
|-----------|-----------------|--------|--------------|



## Spare parts list

| No. | Item Number           | Name         | Quantity used | Delivery time |
|-----|-----------------------|--------------|---------------|---------------|
|     | 2 09 28 30 041-00     | cover        | 1.00          | 10            |
|     | 7 90 11 06 209 00-00  | spout        | 1.00          | 10            |
|     | 5 90 15 05 044 00 90  | cartridge    | 1.00          | 2             |
|     | 1 90 20 66 002 00-00  | handle       | 1.00          | 10            |
|     | 3 09 14 10 091 90     | seal         | 1.00          | 2             |
|     | 4 09 24 04 266 90     | nut          | 1.00          | 2             |
|     | 8 04 23 10 044 07 90  | fixing set   | 1.00          | 2             |
|     | 9 04 30 04 101 00 90  | hose         | 2.00          | 2             |
|     | 6 09 31 09 110-00     | pull-rod     | 1.00          | 10            |
|     | 10 90 11 01 001 00-00 | pop-up waste | 1.00          | 10            |