

TARA ULTRA Single-lever mixer - Matte Black

TARA ULTRA

33 800 875 Product version from 5/3/2021



- 201mm projection
- pivotable spout 360°
- air-enriched flow
- height of mixer 373 mm
- height up to aerator 240 mm
- hole diameter 35 mm
- max. flow 8 l/min at 3 bar flow pressure
- lead-free
- This product can help a building meet the requirements of Green Building Rating Systems, e.g. LEED®, BREEAM®, DGNB
- WRAS

| | | |
|---|-------------------------------|---------------|
|  | Matte Black | 33 800 875-33 |
|  | Chrome | 33 800 875-00 |
|  | Brushed Platinum | 33 800 875-06 |
|  | Platinum | 33 800 875-08 |
|  | Durabrass (23kt Gold) | 33 800 875-09 |
|  | Dark Chrome | 33 800 875-19 |
|  | Brushed Durabrass (23kt Gold) | 33 800 875-28 |
|  | Brushed Bronze | 33 800 875-42 |
|  | Brushed Champagne (22kt Gold) | 33 800 875-46 |
|  | Champagne (22kt Gold) | 33 800 875-47 |
|  | Brushed Chrome | 33 800 875-93 |
|  | Brushed Dark Platinum | 33 800 875-99 |

Recommended miscellaneous

Dispenser without rosette - Matte Black 82 424 970-33

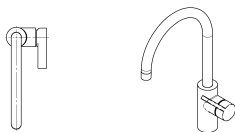
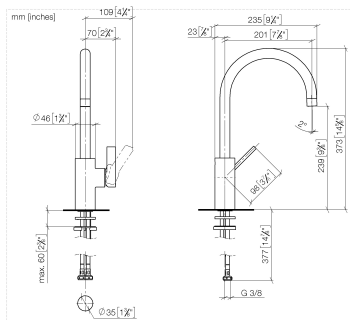


Recommended miscellaneous

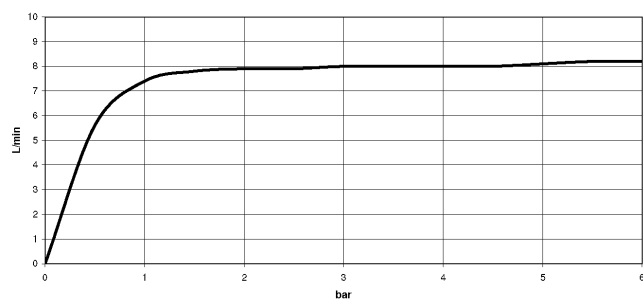
Strainer waste with control handle - Matte Black 10 712 970-33



33 800 875 Product version from 5/3/2021



Flow rate chart



Codes & Standards

| | | | |
|---------------------------|--------------------------------|-----------------------------|------------|
| DIN 4109 | EN 817 | Executive Order no. 1007 | ISO 3822 |
| Scottish Water Byelaws | UK Water Supply Regulations | Ü-Zeichen | VA-Zeichen |



TARA ULTRA Single-lever mixer - Matte Black

TARA ULTRA

33 800 875 Product version from 5/3/2021

Certificates and sustainability

| | | | |
|----------|--------|-----------|--------|
| GDV_0400 | LGA_18 | WRAS_2101 | ETA_18 |
|----------|--------|-----------|--------|

33 800 875 Product version from 5/3/2021

Parts for other
finishes can be found
here: [Chrome](#)

