

LOT Single-lever mixer for rinsing/Profi spray - Dark Chrome

LOT

33 826 680
Product version from 7/1/2023



- 236mm projection
  - pivotable spout 360°
  - air-enriched flow
  - max. flow 8 l/min at 3 bar flow pressure
  - lead-free
  - This product can help a building meet the requirements of Green Building Rating Systems, e.g. LEED®, BREEAM®, DGNB

Single-lever mixer for combining with rinsing/Profi spray only

	Dark Chrome	33 826 680-19
	Chrome	33 826 680-00
	Brushed Platinum	33 826 680-06
	Platinum	33 826 680-08
	Brushed Durabronze (23kt Gold)	33 826 680-28
	Brushed Bronze	33 826 680-42
	Brushed Champagne (22kt Gold)	33 826 680-46
	Champagne (22kt Gold)	33 826 680-47
	Brushed Dark Platinum	33 826 680-99

Recommended miscellaneous

	Dispenser without rosette - Dark Chrome	82 424 970-19
--	---	---------------

Recommended miscellaneous

	Rinsing spray set - Dark Chrome	27 723 970-19
--	---------------------------------	---------------

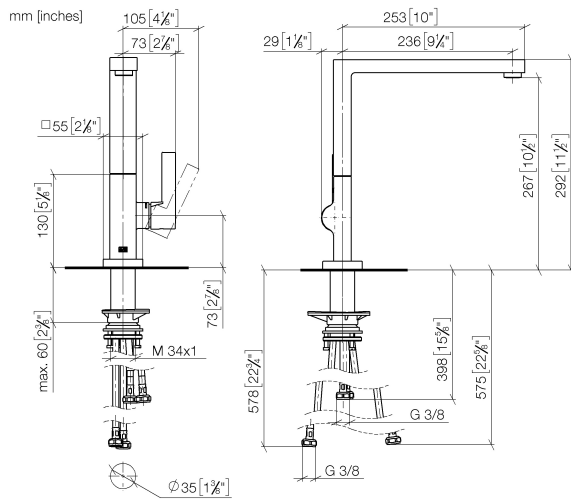
Recommended miscellaneous

	Strainer waste with control handle - Dark Chrome	10 712 970-19
--	--	---------------

## LOT Single-lever mixer for rinsing/Profi spray - Dark Chrome

LOT

33 826 680 Product version from 7/1/2023



### Flow rate chart



### Codes & Standards

DIN 4109

ISO 3822

Ü-Zeichen



## LOT Single-lever mixer for rinsing/Profi spray - Dark Chrome

---

LOT

33 826 680 Product version from 7/1/2023

Certificates and sustainability

---

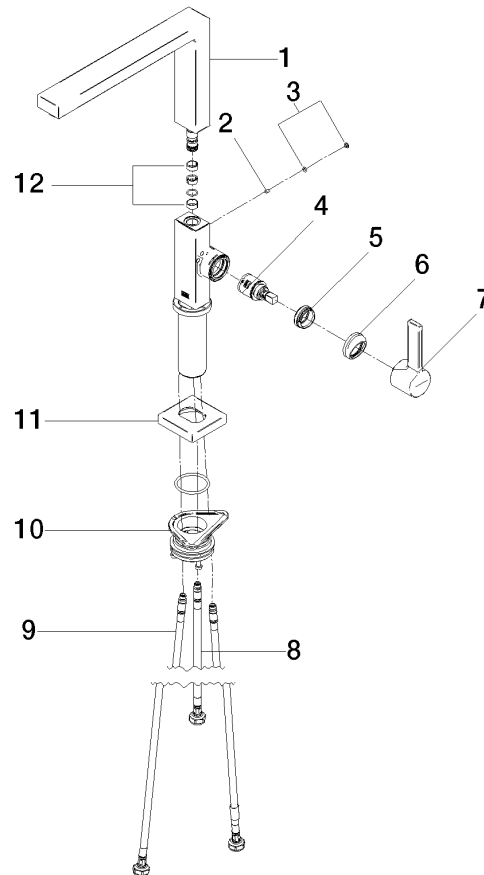
LGA\_38

## LOT Single-lever mixer for rinsing/Profi spray - Dark Chrome

LOT

33 826 680 Product version from 7/1/2023

Parts for other  
finishes can be found  
here: [Chrome](#)



### Spare parts list

No.	Item Number	Name	Quantity used	Delivery time
12	90 28 22 217 01-19	spout	1.00	20
6	90 28 30 052 00-19	cover	1.00	20
1	90 11 06 218 00-19	spout	1.00	20
8	04 30 04 100 00 90	hose	1.00	2
3	90 31 20 087 00-19	plug	1.00	20
10	90 30 10 057 00 90	fixing set	1.00	2
5	09 24 04 266 90	nut	1.00	2
2	09 31 11 044 90	pin	1.00	2
11	90 27 86 004 00-19	rosette	1.00	20
7	90 20 86 004 00-19	handle	1.00	20
4	90 15 05 042 00 90	cartridge	1.00	2
9	04 30 04 101 00 90	hose	2.00	2