


TARA ULTRA Single-lever mixer Pull-down with spray function - Brushed Bronze
TARA ULTRA

33 870 875
Product version from 2/26/2015



- 240mm projection
  - pivotable spout 360°
  - Optional swivel limiter available with swivel limiter set 12 823 970 90
  - laminar and spray flow
  - height of mixer 500 mm
  - height up to laminar flow regulator 240 mm
  - hole diameter 35 mm
  - 1800 mm metal shower hose
  - sprayface with anti-scaling system
  - max. flow 10.4 l/min at 3 bar flow pressure
  - lead-free
  - Flow modes can be changed while the water is running
  - This product can help a building meet the requirements of Green Building Rating Systems, e.g. LEED®, BREEAM®, DGNB
- Intrinsic protection against back flow.

	Brushed Bronze	33 870 875-42
	Chrome	33 870 875-00
	Brushed Platinum	33 870 875-06
	Platinum	33 870 875-08
	Durabrass (23kt Gold)	33 870 875-09
	Dark Chrome	33 870 875-19
	Brushed Durabrass (23kt Gold)	33 870 875-28
	Matte Black	33 870 875-33
	Brushed Champagne (22kt Gold)	33 870 875-46
	Champagne (22kt Gold)	33 870 875-47
	Brushed Chrome	33 870 875-93
	Brushed Dark Platinum	33 870 875-99

Recommended miscellaneous

Strainer waste with control handle
10 712 970-42
- Brushed Bronze



Recommended miscellaneous

Dispenser without rosette -
82 424 970-42
Brushed Bronze

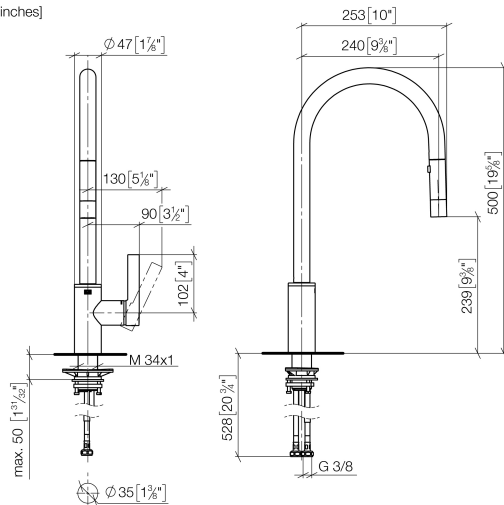


# TARA ULTRA Single-lever mixer Pull-down with spray function - Brushed Bronze

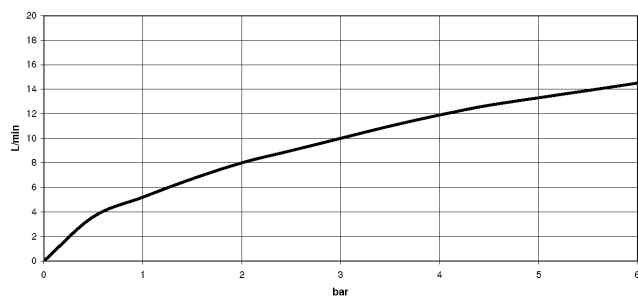
TARA ULTRA

33 870 875 Product version from 2/26/2015

mm [inches]



## Flow rate chart



## Codes & Standards

DIN 4109

Executive Order  
no. 1007

ISO 3822

Ü-Zeichen



## TARA ULTRA Single-lever mixer Pull-down with spray function - Brushed Bronze

TARA ULTRA

---

33 870 875 Product version from 2/26/2015

Certificates and sustainability

---

LGA\_28

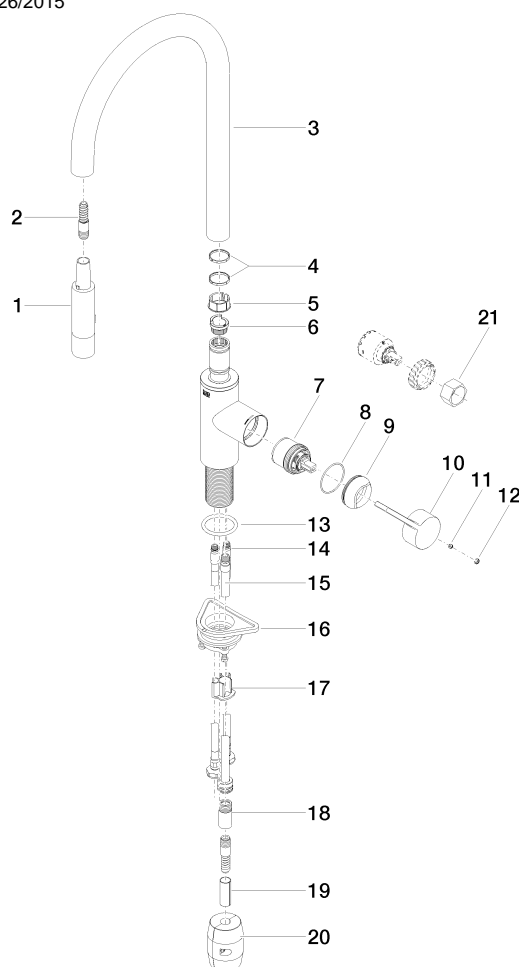
GDV\_0400

# TARA ULTRA Single-lever mixer Pull-down with spray function - Brushed Bronze

TARA ULTRA

33 870 875 Product version from 2/26/2015

Parts for other finishes can be found here: [Chrome](#)



## Spare parts list

No.	Item Number	Name	Quantity used	Delivery time
	4 09 28 10 160 90	ring	2.00	2
	15 04 28 20 067 00 90	pipe	1.00	2
	8 09 14 10 190 90	seal	1.00	2
	5 09 18 40 186 90	sleeve	1.00	2
	18 90 24 03 253 00 90	adaptor	1.00	2
	1 90 12 11 148 00-42	shower	1.00	60
	9 09 28 30 030-42	cover	1.00	60
	7 90 15 05 064 05 90	cartridge	1.00	2
	12 90 31 20 087 00-42	plug	1.00	30
	16 04 30 11 040 00 90	fixing set	1.00	2
	11 90 31 11 063 00 90	pin	1.00	2
	19 09 30 03 038 90	hose	1.00	2
	10 09 20 87 020-42	handle	1.00	60
	6 09 30 11 203 90	ring	1.00	2
	14 04 30 04 101 00 90	hose	2.00	2
	13 09 14 10 036 90	seal	1.00	2
	2 04 30 02 120 00-85	hose	1.00	10
	17 09 20 93 056 90	insert	1.00	2
	20 04 21 50 010 00 90	accessories	1.00	2
	3 90 28 22 304 00-42	spout	1.00	30
	21 90 30 09 031 00 90	key	1.00	2