

VAIA Shower pipe with shower thermostat without hand shower - Brushed Dark Brass

VAIA

34 460 809 Product version from 4/1/2025



- shower with fixed riser projection 452mm
- overhead shower: rain flow
- rain shower Ø 300 mm
- rain shower with anti-scale system
- max. rainshower flow 14 l/min
- Function from: 10 l/min
- rotary diverter with volume control and shut-off function
- slide-on rosettes Ø 70 mm
- height of fittings up to rain shower (bottom edge) 964mm
- height of fittings up to top edge of elbow 1267mm
- gauge 150 mm - 13 mm
- metal shower hose 1750mm with integrated anti-twist protection
- 1/2" connection
- slide bar
- Pipe diameter 23.5 mm

This article does not include a hand shower!
Intrinsic protection against back flow.

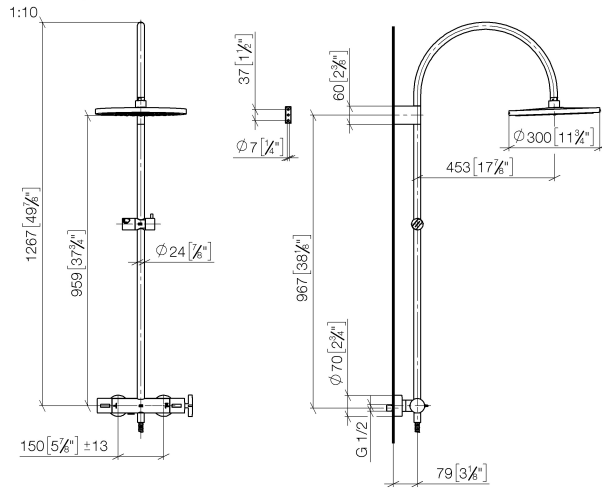
	Brushed Dark Brass	34 460 809-39
	Chrome	34 460 809-00
	Brushed Platinum	34 460 809-06
	Platinum	34 460 809-08
	Dark Chrome	34 460 809-19
	Brushed Durabronze (23kt Gold)	34 460 809-28
	Brushed Bronze	34 460 809-42
	Brushed Champagne (22kt Gold)	34 460 809-46
	Champagne (22kt Gold)	34 460 809-47
	Brushed Dark Platinum	34 460 809-99

VAIA Shower pipe with shower thermostat without hand shower - Brushed Dark Brass

VAIA

34 460 809 Product version from 4/1/2025

mm [inches]



Flow rate chart



Codes & Standards

DIN 4109

EN 1717

ISO 3822

Ü-Zeichen



VAIA Shower pipe with shower thermostat without hand shower - Brushed Dark Brass

VAIA

34 460 809 Product version from 4/1/2025

Certificates and sustainability

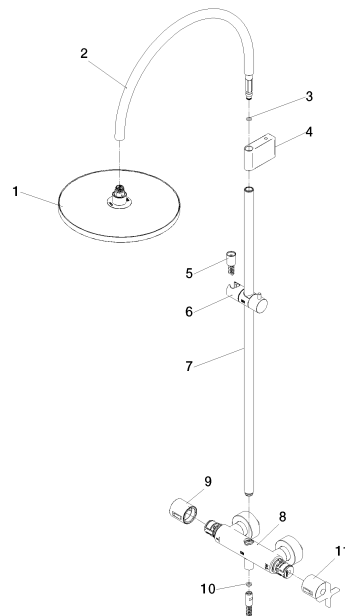
Belgaqua_24-006-2 LGA_38

VAIA Shower pipe with shower thermostat without hand shower - Brushed Dark Brass

VAIA

34 460 809 Product version from 4/1/2025

Parts for other
finishes can be found
here: [Chrome](#)



Spare parts list

No.	Item Number	Name	Quantity used	Delivery time
6	12 570 970-39	Slide unit - Brushed Dark Brass	1.00	60
3	09 14 10 008 90	seal	1.00	2
5	28 322 970-39	Metal shower hose 1/2" x 3/8" x 1750 mm - Brushed Dark Brass	1.00	30
2	04 28 22 346 00-39	pipe	1.00	60
1	04 12 05 091 00-39	shower	1.00	-
Spare part can no longer be ordered, please order the replacement item				
11	90 17 33 030 00-39	handle	1.00	30
7	90 28 22 349 00-39	pipe	1.00	30
10	90 14 20 026 00 90	seal	1.00	2
9	90 17 33 015 00-39	handle	1.00	30
4	90 17 11 150 00-39	holder	1.00	30
8	04 17 01 250 00-39	connection	1.00	60