








## LISSÉ Concealed single-lever mixer with cover plate - Brushed Chrome

36 060 845 Product version from 4/1/2024



- cover plate 78 x 78 mm

	Brushed Chrome	36 060 845-93
	Chrome	36 060 845-00
	Brushed Platinum	36 060 845-06
	Dark Chrome	36 060 845-19
	Brushed Light Gold	36 060 845-27
	Matte Black	36 060 845-33
	Brushed Dark Platinum	36 060 845-99

### Required miscellaneous



- Concealed wall-mounted single-lever mixer -** 35 860 970 90
- max. recess depth mm
  - min. recess depth mm



## LISSÉ Concealed single-lever mixer with cover plate - Brushed Chrome

---

36 060 845 Product version from 4/1/2024

### Codes & Standards

---

DIN 4109

ISO 3822

Ü-Zeichen

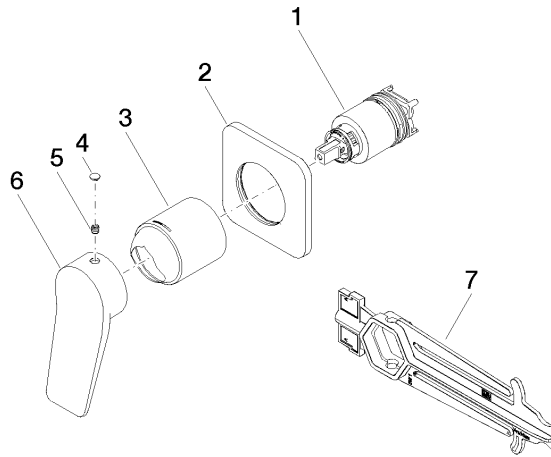
### Certificates

---

LGA\_29

**LISSÉ Concealed single-lever mixer with cover plate - Brushed Chrome**

36 060 845 Product version from 4/1/2024



**Spare parts list**

No.	Item Number	Name	Quantity used	Delivery time
1	90 15 05 046 02 90	cartridge	1	2
2	90 27 84 020 00-93	rosette	1	30
3	09 11 02 288-93	cover	1	20
4	90 31 20 087 00-93	plug	1	20
5	90 31 11 030 00 90	pin	1	2
6	09 20 84 021-93	handle	1	20
7	90 30 09 064 00 90	key	1	2