

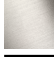






## LISSÉ Concealed single-lever mixer with diverter - Dark Chrome

36 120 845 Product version from 2/20/2020



- automatic diverter
- cover plate 150 x 90 mm
- WRAS

	Dark Chrome	36 120 845-19
	Chrome	36 120 845-00
	Brushed Platinum	36 120 845-06
	Brushed Light Gold	36 120 845-27
	Matte Black	36 120 845-33
	Brushed Chrome	36 120 845-93
	Brushed Dark Platinum	36 120 845-99

### Required miscellaneous



**Concealed single-lever mixer with backflow preventor -** 35 021 970 90  
 • max. recess depth mm  
 • min. recess depth mm

### Recommended miscellaneous



**xGRID Attachment set for integrating in the dry wall construction -** 12 340 970 90

### Required miscellaneous



**Concealed single-lever mixer -** 35 020 970 90  
 • max. recess depth mm  
 • min. recess depth mm

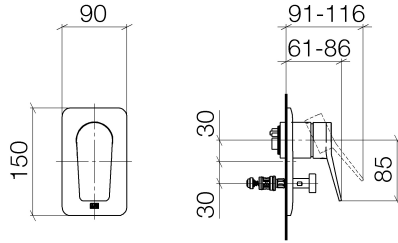
### Required miscellaneous



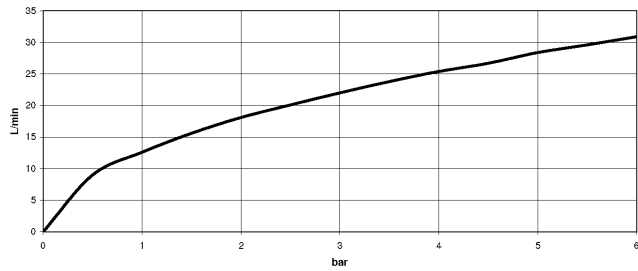
**xGRID Installation track 555 mm -** 12 360 970 90

**LISSÉ Concealed single-lever mixer with diverter - Dark Chrome**

36 120 845 Product version from 2/20/2020



**Flow rate chart**



**Codes & Standards**

DIN 4109

ISO 3822

Scottish Water  
Byelaws

UK Water Supply  
Regulations

Ü-Zeichen



## LISSÉ Concealed single-lever mixer with diverter - Dark Chrome

---

36 120 845 Product version from 2/20/2020

### Certificates

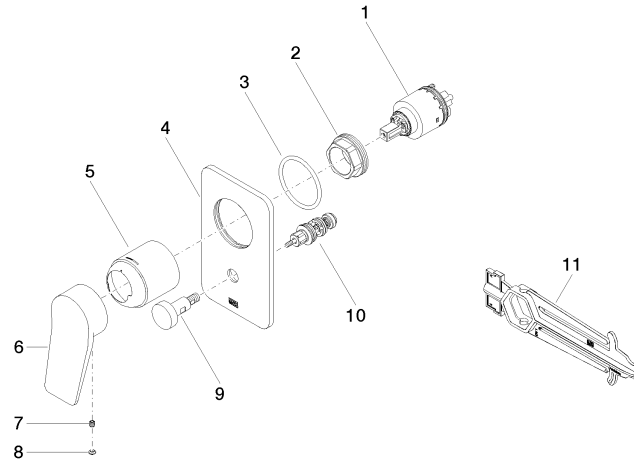
---

LGA\_19

WRAS\_2207

**LISSÉ Concealed single-lever mixer with diverter - Dark Chrome**

36 120 845 Product version from 2/20/2020



**Spare parts list**

No.	Item Number	Name	Quantity used	Delivery time
1	90 15 05 039 00 90	cartridge	1	2
2	09 24 04 448 90	nut	1	2
3	09 14 10 084 90	seal	1	2
4	09 11 02 301-19	plate	1	60
5	09 11 02 260-19	sleeve	1	20
6	09 20 84 022-19	handle	1	60
7	90 31 11 030 00 90	pin	1	2
8	90 31 20 087 00-19	plug	1	20
9	90 31 09 139 00-19	pull-rod	1	20
10	90 21 34 081 00 90	diverter	1	2
11	90 30 09 064 00 90	key	1	2