








## LISSÉ Concealed single-lever mixer with diverter - Brushed Light Gold

36 120 845 Product version from 2/20/2020



- automatic diverter
- cover plate 150 x 90 mm
- WRAS

|   |                       |               |
|---|-----------------------|---------------|
|  | Brushed Light Gold    | 36 120 845-27 |
|  | Chrome                | 36 120 845-00 |
|  | Brushed Platinum      | 36 120 845-06 |
|  | Dark Chrome           | 36 120 845-19 |
|  | Matte Black           | 36 120 845-33 |
|  | Brushed Chrome        | 36 120 845-93 |
|  | Brushed Dark Platinum | 36 120 845-99 |

### Required miscellaneous



**Concealed single-lever mixer with backflow preventor -** 35 021 970 90  
 •min. recess depth mm  
 •max. recess depth mm

### Recommended miscellaneous



**xGRID Attachment set for integrating in the dry wall construction -** 12 340 970 90

### Required miscellaneous



**Concealed single-lever mixer -** 35 020 970 90  
 •min. recess depth mm  
 •max. recess depth mm

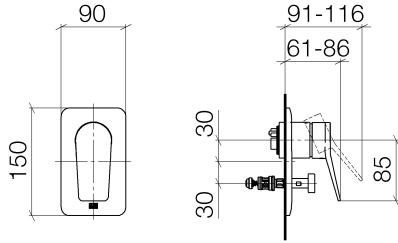
### Required miscellaneous



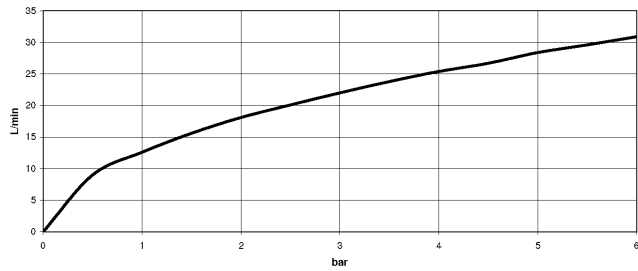
**xGRID Installation track 555 mm -** 12 360 970 90

**LISSÉ Concealed single-lever mixer with diverter - Brushed Light Gold**

36 120 845 Product version from 2/20/2020



**Flow rate chart**



**Codes & Standards**

DIN 4109

ISO 3822

Scottish Water  
Byelaws

UK Water Supply  
Regulations

**Ü-Zeichen**



## LISSÉ Concealed single-lever mixer with diverter - Brushed Light Gold

---

36 120 845 Product version from 2/20/2020

### Certificates

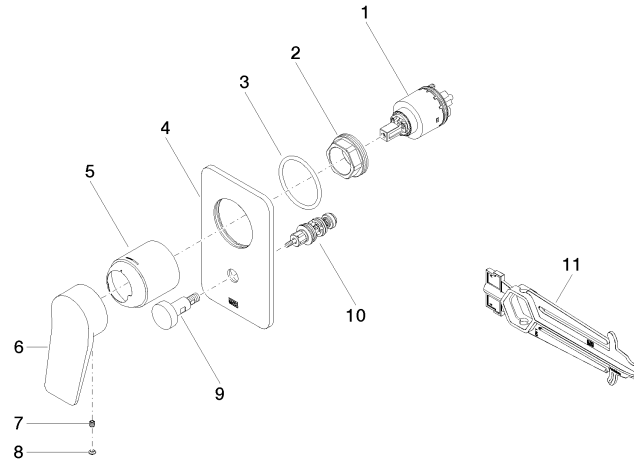
---

LGA\_19

WRAS\_2207

**LISSÉ Concealed single-lever mixer with diverter - Brushed Light Gold**

36 120 845 Product version from 2/20/2020



**Spare parts list**

| No. | Item Number        | Name      | Quantity used | Delivery time |
|-----|--------------------|-----------|---------------|---------------|
| 1   | 90 15 05 039 00 90 | cartridge | 1             | 2             |
| 2   | 09 24 04 448 90    | nut       | 1             | 2             |
| 3   | 09 14 10 084 90    | seal      | 1             | 2             |
| 4   | 09 11 02 301-27    | plate     | 1             | 60            |
| 5   | 09 11 02 260-27    | sleeve    | 1             | 60            |
| 6   | 09 20 84 022-27    | handle    | 1             | 60            |
| 7   | 90 31 11 030 00 90 | pin       | 1             | 2             |
| 8   | 90 31 20 087 00-27 | plug      | 1             | 30            |
| 9   | 90 31 09 139 00-27 | pull-rod  | 1             | 30            |
| 10  | 90 21 34 081 00 90 | diverter  | 1             | 2             |
| 11  | 90 30 09 064 00 90 | key       | 1             | 2             |