

VAIA Concealed two-way diverter - Champagne (22kt Gold)

36 200 809 Product version from 4/1/2022



- rotary diverter
- rosette Ø 60 mm
- WRAS

	Champagne (22kt Gold)	36 200 809-47
	Chrome	36 200 809-00
	Brushed Platinum	36 200 809-06
	Dark Chrome	36 200 809-19
	Brushed Durabronze (23kt Gold)	36 200 809-28
	Brushed Bronze	36 200 809-42
	Brushed Champagne (22kt Gold)	36 200 809-46
	Brushed Dark Platinum	36 200 809-99

Required miscellaneous

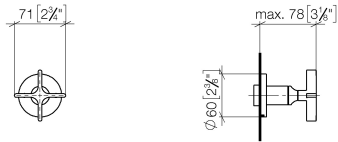


- Concealed two-way diverter -** 35 202 970 90
- max. recess depth mm
 - min. recess depth mm

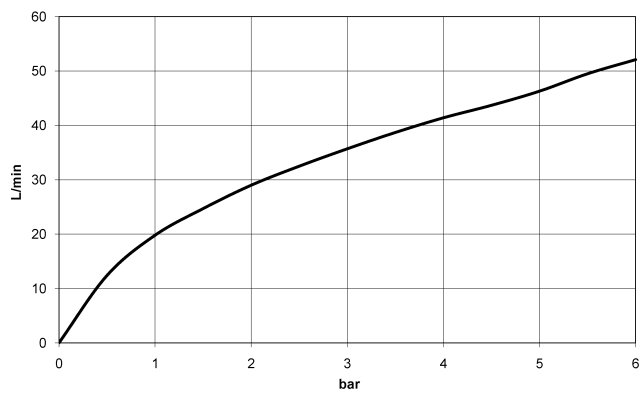
VAIA Concealed two-way diverter - Champagne (22kt Gold)

36 200 809 Product version from 4/1/2022

mm [inches]



Flow rate chart



Codes & Standards

DIN 4109

ISO 3822

Scottish Water
Byelaws

UK Water Supply
Regulations

Ü-Zeichen



VAIA Concealed two-way diverter - Champagne (22kt Gold)

36 200 809 Product version from 4/1/2022

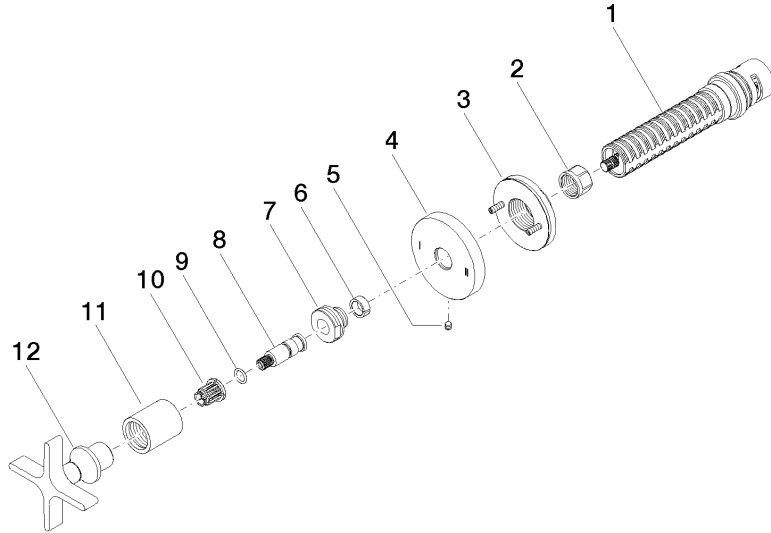
Certificates

LGA_38

WRAS_2307

VAIA Concealed two-way diverter - Champagne (22kt Gold)

36 200 809 Product version from 4/1/2022



Spare parts list

No.	Item Number	Name	Quantity used	Delivery time
1	90 90 03 304 10 90	diverter	1	2
2	90 23 30 023 00 90	nut	1	2
3	90 21 02 181 00 90	disc	1	2
4	09 27 89 118-47	rosette	1	30
5	09 31 11 294 90	pin	1	2
6	90 14 15 020 03 90	ring	1	2
7	09 24 05 002 90	nipple	1	2
8	09 29 06 022 90	spindle	1	2
9	90 14 10 060 00 90	seal	1	2
10	90 12 12 002 00 90	fixing cap	1	2
11	09 21 02 070-47	cover	1	30
12	90 20 80 014 01-47	handle	1	30